

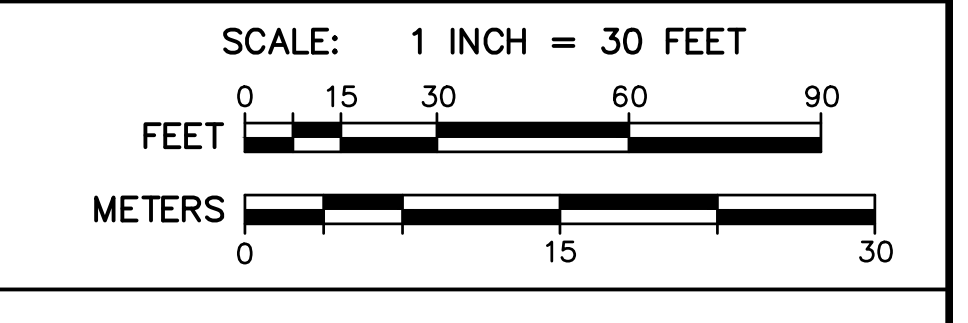
**LEGEND**

	WFL	WETLAND EDGE
	100'	100' WETLAND BUFFER ZONE LIMIT
	2'	2' CONTOUR
	10'	10' CONTOUR
	PROPOSED	PROPOSED CONTOUR
	EXISTING	EXISTING SPOT GRADE
	PROPOSED	PROPOSED SPOT GRADE
	PROPOSED	PROPOSED DRAIN MANHOLE
	PROPOSED	PROPOSED CATCHBASIN
	PROPOSED	PROPOSED DOUBLE GRATED CATCHBASIN
	PROPOSED	PROPOSED SEWER MANHOLE
	PROPOSED	PROPOSED UNDERGROUND DRAIN OR SEWER PIPE
	PROPOSED	PROPOSED WATER LINE
	PROPOSED	PROPOSED HYDRANT
	EXISTING	EXISTING EDGE OF PAVEMENT
	PROPOSED	PROPOSED SLOPED GRANITE CURBING
	#6φ	EXISTING UTILITY POLE
	OHW	OVERHEAD WIRES
		STONE WALL
		TREE
	PROPOSED	PROPOSED TREELINE
	23	DEEP OBSERVATION HOLE
		PROPOSED WALKING TRAIL
	ETC	PROPOSED ELECTRIC, TELEPHONE, CABLE CONDUIT
		PROPOSED STREET LIGHT
		PROPOSED INFILTRATION STRUCTURE TO RECEIVE CAPTURED RUNOFF
	ST	PROPOSED SEDIMENT CONTROL BARRIER
		PROPOSED STOP SIGN
		PROPOSED DIVERSION SWALE
		PROPOSED HANDICAPPED ACCESSIBLE PARKING SPACE
		PROPOSED GUARDRAIL
		PROPOSED STONE FILLED SITE ENTRANCE MAT

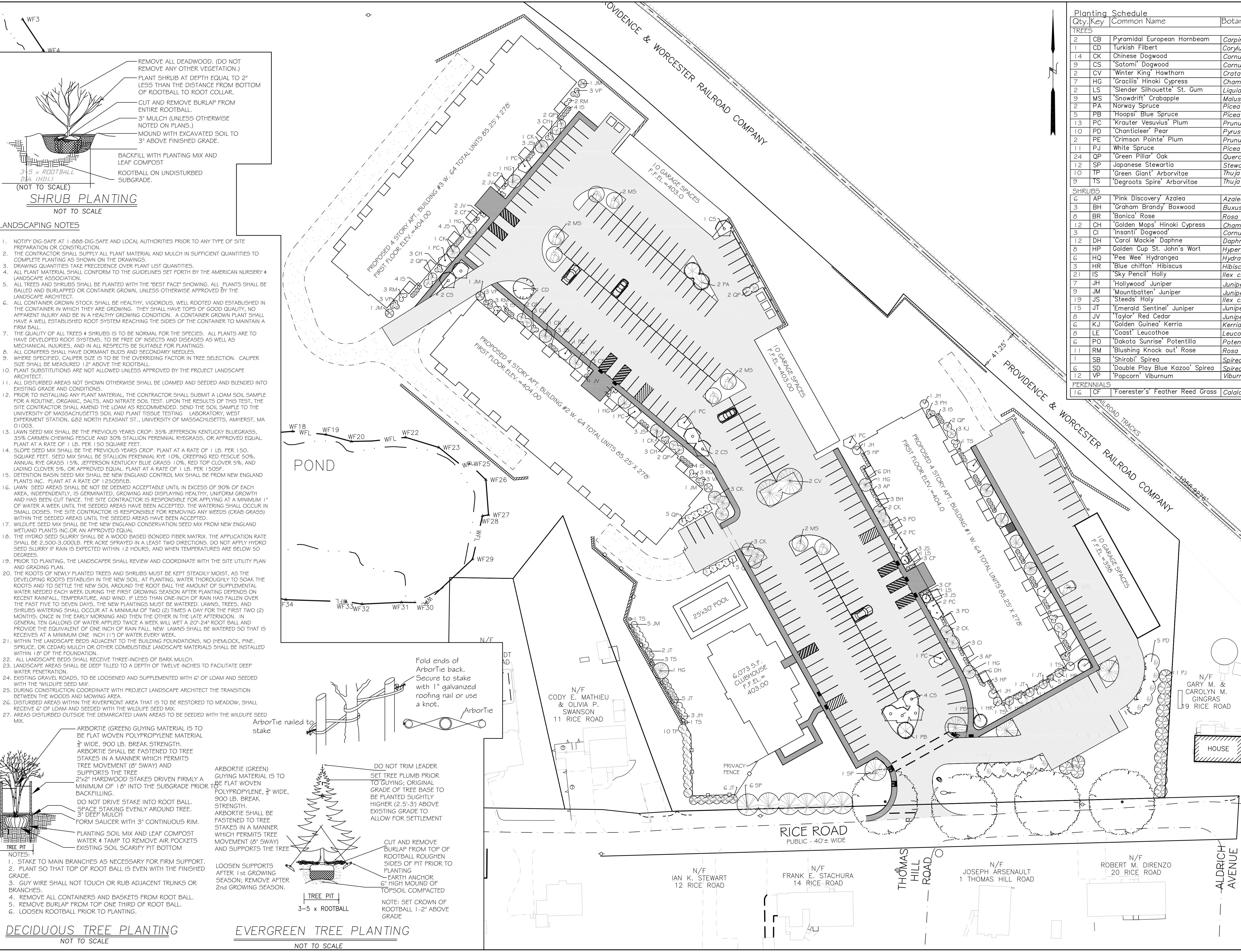
**AZIMUTH LAND DESIGN, LLC**  
 Professional Engineers & Erosion Control Specialists  
 118 Turnpike Road, Suite 200, Southborough, MA 01772  
 Telephone (508) 485-0137 jarnest@azimutlanddesign.co

**JAMES L. TETRAULT**  
 CIVIL  
 No. 38548  
 PROFESSIONAL ENGINEER

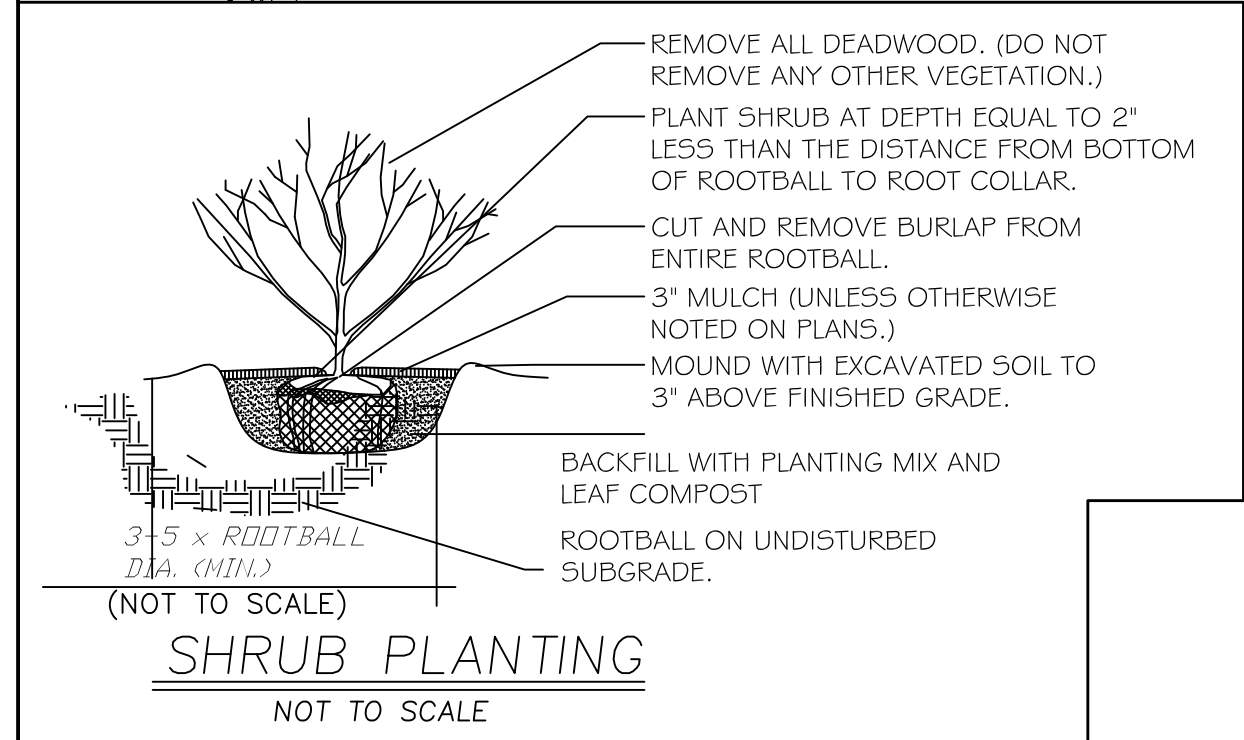
CLT. NO.	501	JOB NO.	224-501
DATE:	OCTOBER 24, 2023	DWG NO.	RICERODMILLBURYCURRENT
REVISIONS			
DATE:	DESCRIPTION		
12/29/23	TOWN REVIEW		
2/19/24	TOWN REVIEW		
4/15/24	TOWN REVIEW		



**RICE POND VILLAGE**  
**SITE PLAN OF LAND**  
 IN  
**MILLBURY, MASSACHUSETTS**  
 PREPARED FOR  
**RICE POND VILLAGE, LLC**  
 118 TURNPIKE ROAD, SUITE 200  
 SOUTHBOROUGH, MA 01772



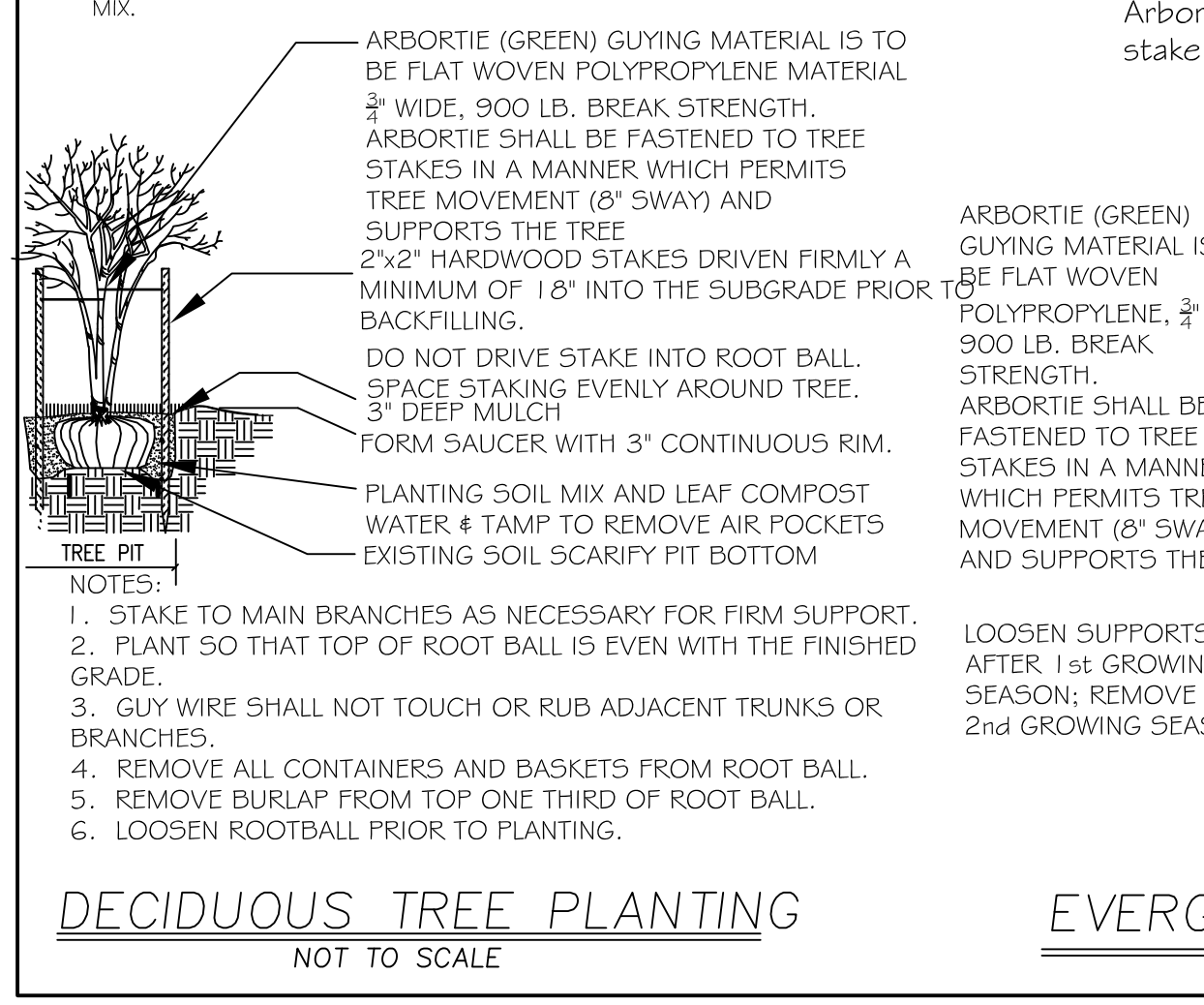
Qty.	Key	Common Name	Botanical Name	Size	Remarks
<b>TREES</b>					
2	CB	Pyramidal European Hornbeam	<i>Carpinus betulus 'Fastigiata'</i>	3" Cal.	B&B
1	CD	Turkish Filbert	<i>Corylus coruina</i>	3" Cal.	B&B
14	CK	Chinese Dogwood	<i>Cornus kousa chinensis</i>	3" Cal.	B&B
9	CS	"Satomi" Dogwood	<i>Cornus kousa 'Santomi'</i>	3" Cal.	B&B
2	CV	"Winter King" Hawthorn	<i>Crataegus viridis 'Winter King'</i>	3" Cal.	B&B
7	HG	"Gracilis" Hinoki Cypress	<i>Cham. obtusa 'Gracilis'</i>	7" Ht.	B&B
2	LS	"Slender Silhouette" St. Gum	<i>Liquidambar styr. 'Slender Sil.'</i>	3" Cal.	B&B
9	MS	"Snowdrift" Crabapple	<i>Malus sp. 'Snowdrift'</i>	3" Cal.	B&B
2	PA	Norway Spruce	<i>Picea abies</i>	8" Ht.	B&B
5	PB	"Hoopsi" Blue Spruce	<i>Picea pungens 'Hoopsi'</i>	12" Ht.	B&B
13	PC	"Krauter Vesuvius" Plum	<i>Prunus cerasifera 'Krauter vesuvius'</i>	3" Cal.	B&B
10	PD	"Chanticleer" Pear	<i>Pyrus calleryana 'Chanticleer'</i>	3" Cal.	B&B
2	PE	"Crimson Pointe" Plum	<i>Prunus cerasifera 'Crimson Pointe'</i>	3" Cal.	B&B
11	PJ	White Spruce	<i>Picea glauca</i>	8 Ht.	B&B
24	QP	"Green Pillar" Oak	<i>Quercus palustris 'Green Pillar'</i>	3" Cal.	B&B
12	SP	Japanese Stewartia	<i>Stewartia pseudocamellia 'Koreana'</i>	3" Cal.	B&B
10	TP	"Green Giant" Arborvitae	<i>Thuja plicata 'Green Giant'</i>	8" Ht.	B&B
9	TS	"Degroots Spire" Arborvitae	<i>Thuja occidentalis 'Degroots spire'</i>	8" Ht.	B&B
<b>SHRUBS</b>					
6	AP	"Pink Discovery" Azalea	<i>Azalea sp. 'Pink Discovery' 'evergreen'</i>	#7 Pot	Container Grown
3	BH	"Graham Brandy" Boxwood	<i>Buxus sempervirens 'Graham Brandy'</i>	3" Ht.	B&B
8	BR	"Bonica" Rose	<i>Rosa sp. 'Bonica'</i>	#3 Pot	Container Grown
12	CH	"Golden Mops" Hinoki Cypress	<i>Chamaecyparis obtusa 'Golden Mops'</i>	#3 Pot	Container Grown
3	CI	"Insanti" Dogwood	<i>Cornus sericea 'Insanti'</i>	#7 Pot	Container Grown
12	DH	"Carol Mackie" Daphne	<i>Daphne burkwoodii 'Carol Mackie'</i>	24" Ht.	B&B
8	HP	Golden Cup St. John's Wort	<i>Hypericum Hidcoti</i>	#3 Pot	Container Grown
6	HQ	"Pee Wee" Hydrangea	<i>Hydrangea quercifolia 'Pee Wee'</i>	#3 Pot	Container Grown
3	HR	"Blue chiffon" Hibiscus	<i>Hibiscus syriacus 'Rose Satin'</i>	5" Ht.	Container Grown
21	IS	"Sky Pencil" Holly	<i>Ilex crenata 'Sky Pencil'</i>	#15 Pot	Container Grown
7	JH	"Hollywood" Juniper	<i>Juniperus chinensis 'Hollywood'</i>	48" Ht.	B&B
9	JM	"Mountbatten" Juniper	<i>Juniperus chinensis 'Mountbatten'</i>	48" Ht.	B&B
19	JS	"Steads" Holly	<i>Ilex crenata 'Steads'</i>	#15Pot	Container Grown
15	JT	"Emerald Sentinel" Juniper	<i>Juniperus virginiana 'Emerald Sentinel'</i>	8" Ht.	Container Grown
8	JV	"Taylor Red Cedar	<i>Juniperus virginiana 'Taylor'</i>	60" Ht.	B&B
6	KJ	"Golden Guinea" Kerria	<i>Kerria japonica 'Golden Guinea'</i>	24" Ht.	B&B
8	LE	"Coast" Leucothoe	<i>Leucothoe axillaris</i>	#3 Pot	Container Grown
6	PO	"Dakota Sunrise" Potentilla	<i>Potentilla fruticosa 'Dakota Sunrise'</i>	#3 Pot	Container Grown
11	RM	"Blushing Knock out" Rose	<i>Rosa sp. 'Blushing Knock Out'</i>	#3 Pot	Container Grown
1	SB	"Shirobi" Spirea	<i>Spiraea japonica 'Shirobi'</i>	#3 Pot	Container Grown
6	SD	"Double Play Blue Kazoo" Spirea	<i>Spiraea media 'Blue Kazoo'</i>	#3 Pot	Container Grown
12	VP	"Popcorn" Viburnum	<i>Viburnum plicatum 'Popcorn'</i>	48" Ht.	B&B
<b>PERENNIALS</b>					
16	CF	"Foerster's" Feather Reed Grass	<i>Calamagrostis x acuti, 'Karl Foerster'</i>	#3 Pot	Container Grown



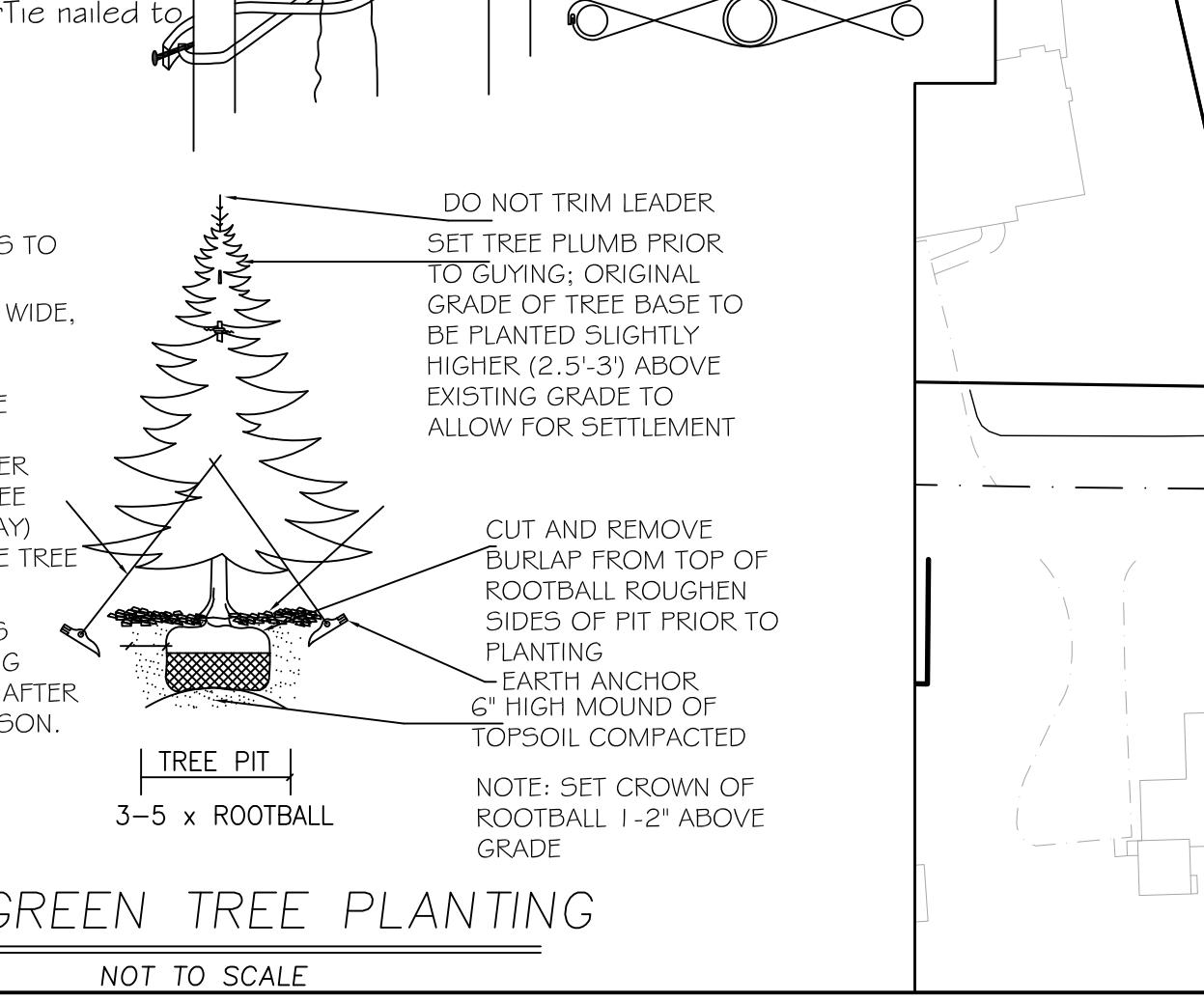
**SHRUB PLANTING**  
NOT TO SCALE

**LANDSCAPING NOTES**

1. NOTIFY DIG-SAFE AT 1-888-DIG-SAFE AND LOCAL AUTHORITIES PRIOR TO ANY TYPE OF SITE PREPARATION OR CONSTRUCTION.
2. THE CONTRACTOR SHALL SUPPLY ALL PLANT MATERIAL AND MULCH IN SUFFICIENT QUANTITIES TO COMPLETE PLANTING AS SHOWN ON THE DRAWINGS.
3. DRAWING QUANTITIES TAKE PRECEDENCE OVER PLANT LIST QUANTITIES.
4. ALL PLANT MATERIAL SHALL CONFORM TO THE GUIDELINES SET FORTH BY THE AMERICAN NURSERY & LANDSCAPE ASSOCIATION.
5. ALL TREES AND SHRUBS SHALL BE PLANTED WITH THE "BEST FACE" SHOWING. ALL PLANTS SHALL BE BALLED AND BURLAPPED OR CONTAINER GROWN, UNLESS OTHERWISE APPROVED BY THE LANDSCAPE ARCHITECT.
6. ALL CONTAINER GROWN STOCK SHALL BE HEALTHY, VIGOROUS, WELL ROOTED AND ESTABLISHED IN THE CONTAINER IN WHICH THEY ARE GROWING. THEY SHALL HAVE TOPS OF GOOD QUALITY, NO APPARENT CLONING AND BE IN A HEALTHY GROWING CONDITION. A CONTAINER GROWN PLANT SHALL HAVE A WELL ESTABLISHED ROOT SYSTEM REACHING THE SIDES OF THE CONTAINER TO MAINTAIN A FIRM BALL.
7. THE QUALITY OF ALL TREES & SHRUBS IS TO BE NORMAL FOR THE SPECIES. ALL PLANTS ARE TO HAVE DEVELOPED ROOT SYSTEMS, TO BE FREE OF INSECTS AND DISEASES AS WELL AS MECHANICAL INJURIES, AND IN ALL RESPECTS TO BE SUITABLE FOR PLANTINGS.
8. ALL CONIFERS SHALL HAVE DORMANT BUDS AND SECONDARY NEEDLES.
9. WHERE SPECIFIED, CALIPER SIZE IS TO BE THE OVERRIDING FACTOR IN TREE SELECTION. CALIPER SIZE SHALL BE MEASURED 1" ABOVE THE ROOTBALL.
10. PLANT SUBSTITUTIONS ARE NOT ALLOWED UNLESS APPROVED BY THE PROJECT LANDSCAPE ARCHITECT.
11. ALL DISTURBED AREAS NOT SHOWN OTHERWISE SHALL BE LOAMED AND SEEDED AND BLENDED INTO EXISTING GRADE AND CONDITIONS.
12. PRIOR TO INSTALLING ANY PLANT MATERIAL, THE CONTRACTOR SHALL SUBMIT A LOAM SOIL SAMPLE FOR A ROUTINE, ORGANIC, SALTS, AND NITRATE SOIL TEST. UPON THE RESULTS OF THIS TEST, THE SITE CONTRACTOR SHALL AMEND THE LOAM AS RECOMMENDED. SEND THE SOIL SAMPLE TO THE UNIVERSITY OF MASSACHUSETTS SOIL AND PLANT TISSUE TESTING LABORATORY, WEST EXPERIMENT STATION, 662 NORTH PLEASANT ST., UNIVERSITY OF MASSACHUSETTS, AMHERST, MA 01003.
13. LAWN SEED MIX SHALL BE THE PREVIOUS YEARS CROP: 35% JEFFERSON KENTUCKY BLUEGRASS, 35% CARMEN CHEWING FESCUE AND 30% STALLION PERENNIAL RYEGRASS, OR APPROVED EQUAL. PLANT AT A RATE OF 1 LB. PER 150 SQUARE FEET.
14. SLOPE SEED MIX SHALL BE THE PREVIOUS YEARS CROP. PLANT AT A RATE OF 1 LB. PER 150 SQUARE FEET. SEED MIX SHALL BE STALLION PERENNIAL RYE 10%, CREEPING RED FESCUE 50%, ANNUAL RYE GRASS 15%, JEFFERSON KENTUCKY BLUE GRASS 10%, RED TOP CLOVER 5%, AND LADINO CLOVER 5%, OR APPROVED EQUAL. PLANT AT A RATE OF 1 LB. PER 150SF.
15. DEFENTION BASIN SEED MIX SHALL BE NEW ENGLAND CONTROL MIX SHALL BE FROM NEW ENGLAND PLANTS INC. PLANT AT A RATE OF 1250SF/LB.
16. LAWN SEED AREAS SHALL BE NOT BE DEEMED ACCEPTABLE UNTIL IN EXCESS OF 90% OF EACH AREA, INDEPENDENTLY, IS GERMINATED, GROWING AND DISPLAYING HEALTHY, UNIFORM GROWTH AND HAS BEEN CUT TWICE. THE SITE CONTRACTOR IS RESPONSIBLE FOR APPLYING AT A MINIMUM 1" OF WATER A WEEK UNTIL THE SEEDED AREAS HAVE BEEN ACCEPTED. THE WATERING SHALL OCCUR IN SMALL DOSES. THE SITE CONTRACTOR IS RESPONSIBLE FOR REMOVING ANY WEEDS (CRAB GRASS) WITHIN THE SEEDED AREAS UNTIL THE SEEDED AREAS HAVE BEEN ACCEPTED.
17. WILDLIFE SEED MIX SHALL BE THE NEW ENGLAND CONSERVATION SEED MIX FROM NEW ENGLAND WETLAND PLANTS INC. OR AN APPROVED EQUAL.
18. THE HYDRO SEED SLURRY SHALL BE A WOOD BASED BONDED FIBER MATRIX. THE APPLICATION RATE SHALL BE 2,500-3,000LB. PER ACRE SPRAYED IN A LEAST TWO DIRECTIONS. DO NOT APPLY HYDRO SEED SLURRY IF RAIN IS EXPECTED WITHIN 12 HOURS, AND WHEN TEMPERATURES ARE BELOW 50 DEGREES.
19. PRIOR TO PLANTING, THE LANDSCAPER SHALL REVIEW AND COORDINATE WITH THE SITE UTILITY PLAN AND GRADING PLAN.
20. THE ROOTS OF NEWLY PLANTED TREES AND SHRUBS MUST BE KEPT STEADILY MOIST. AS THE DEVELOPING ROOTS ESTABLISH IN THE NEW SOIL, AT PLANTING, WATER THOROUGHLY TO SOAK THE ROOTS AND TO SETTLE THE NEW SOIL AROUND THE ROOT BALL. THE AMOUNT OF SUPPLEMENTAL WATER NEEDED EACH WEEK DURING THE FIRST GROWING SEASON AFTER PLANTING DEPENDS ON RECENT RAINFALL, TEMPERATURE AND WIND. IF LESS THAN ONE INCH OF RAIN HAS FALLEN OVER THE PAST FIVE TO SEVEN DAYS, THE NEW PLANTINGS MUST BE WATERED. LAWNS, TREES, AND SHRUBS WATERING SHALL OCCUR AT A MINIMUM OF TWO (2) TIMES A DAY FOR THE FIRST TWO (2) MONTHS; ONCE IN THE EARLY MORNING AND THEN THE OTHER IN THE LATE AFTERNOON. IN GENERAL TEN GALLONS OF WATER APPLIED TWICE A WEEK WILL WET A 20'-24" ROOT BALL AND PROVIDE THE EQUIVALENT OF ONE INCH OF RAIN FALL. NEW LAWNS SHALL BE WATERED SO THAT IT RECEIVES AT A MINIMUM ONE (1) INCH (1") OF WATER EVERY WEEK.
21. WITHIN THE LANDSCAPE BEDS ADJACENT TO THE BUILDING FOUNDATIONS, NO (HEMLOCK, PINE, SPRUCE, OR CEDAR) MULCH OR OTHER COMBUSTIBLE LANDSCAPE MATERIALS SHALL BE INSTALLED WITHIN 18" OF THE FOUNDATION.
22. ALL LANDSCAPE BEDS SHALL RECEIVE THREE-INCHES OF BARK MULCH.
23. LANDSCAPE AREAS SHALL BE DEEP TILLED TO A DEPTH OF TWELVE INCHES TO FACILITATE DEEP WATER PENETRATION.
24. EXISTING GRAVEL ROADS, TO BE LOOSEND AND SUPPLEMENTED WITH 6" OF LOAM AND SEEDED WITH THE "WILDLIFE SEED MIX."
25. DURING CONSTRUCTION COORDINATE WITH PROJECT LANDSCAPE ARCHITECT THE TRANSITION BETWEEN THE WOODS AND MOWING AREA.
26. DISTURBED AREAS WITHIN THE RIVERFRONT AREA THAT IS TO BE RESTORED TO MEADOW, SHALL RECEIVE 6" OF LOAM AND SEEDED WITH THE WILDLIFE SEED MIX.
27. AREAS DISTURBED OUTSIDE THE DEMARCATED LAWN AREAS TO BE SEEDED WITH THE WILDLIFE SEED MIX.



**DECIDUOUS TREE PLANTING**  
NOT TO SCALE

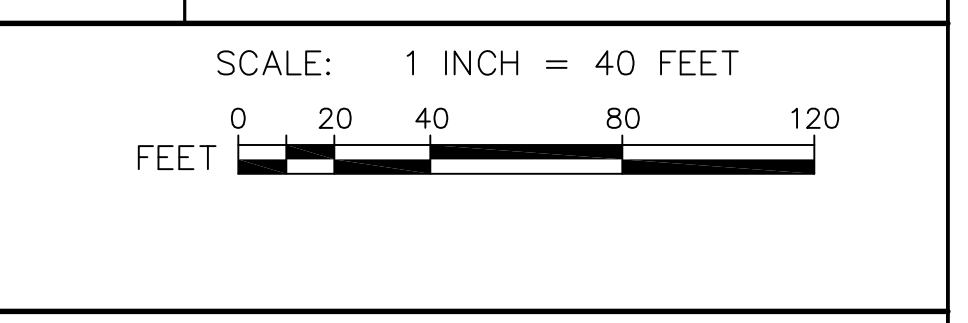


**EVERGREEN TREE PLANTING**  
NOT TO SCALE

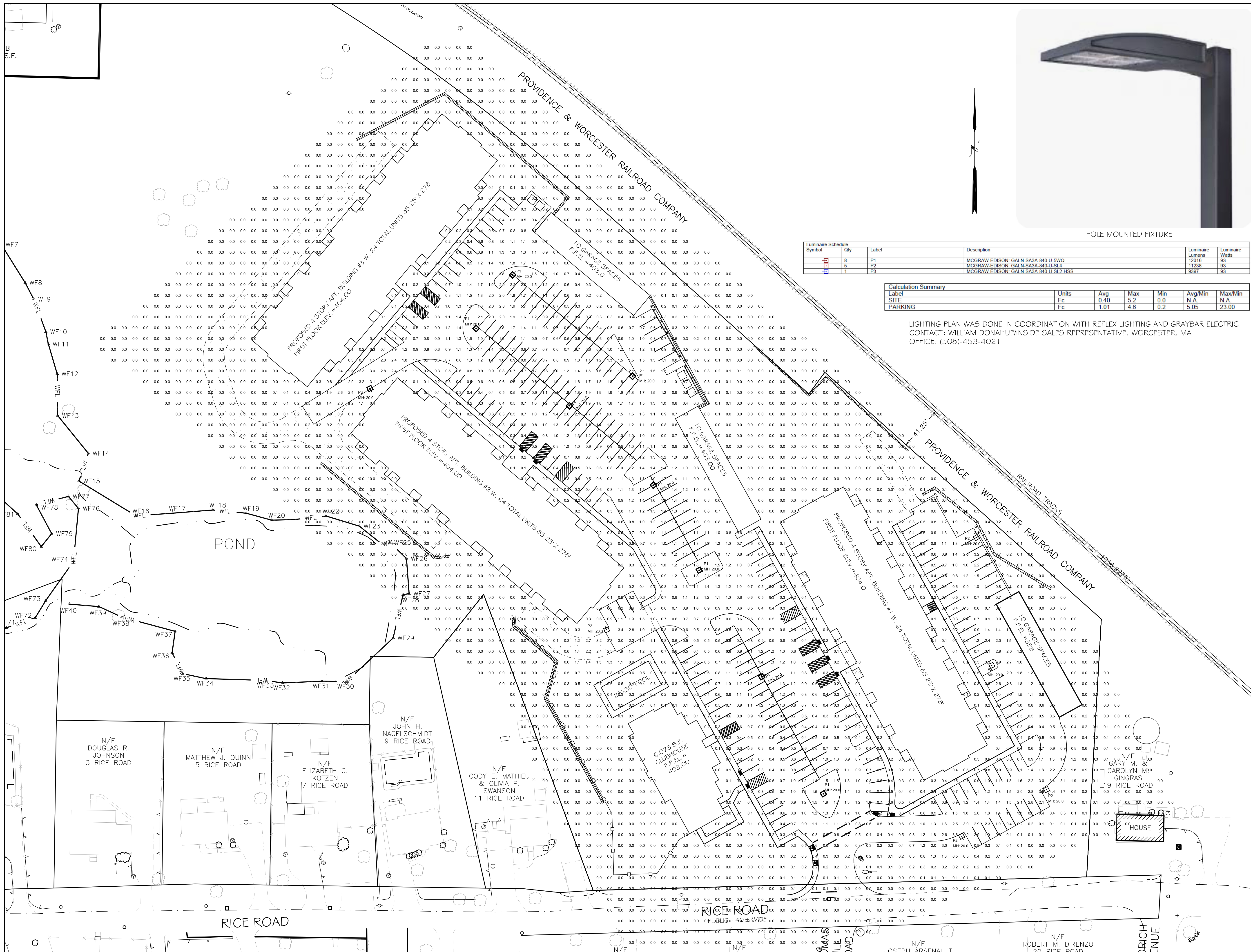


**AZIMUTH LAND DESIGN, LLC**  
Professional Engineers & Erosion Control Specialists  
325 Donald Lynch Boulevard, Suite 100, Marlborough, MA 01752  
Telephone (508)-455-0137 janes@azimuthlanddesign.co

CLT. NO.	3151	JOB NO.	186-3234
DATE:	OCTOBER 24-2023	DWG NO.	ANTAYACURRENT
REVISIONS			
DATE:		DESCRIPTION	
02/19/24		REVISIONS	
04/15/24		REVISIONS	



**SITE PLAN OF LAND AT 15 RICE ROAD**  
IN  
**MILLBURY, MASSACHUSETTS**  
PREPARED FOR APPLICANT  
**SJV INVESTMENTS, LLC**  
ONE GOLDEN COURT  
WESTBOROUGH, MA 01581



POLE MOUNTED FIXTURE

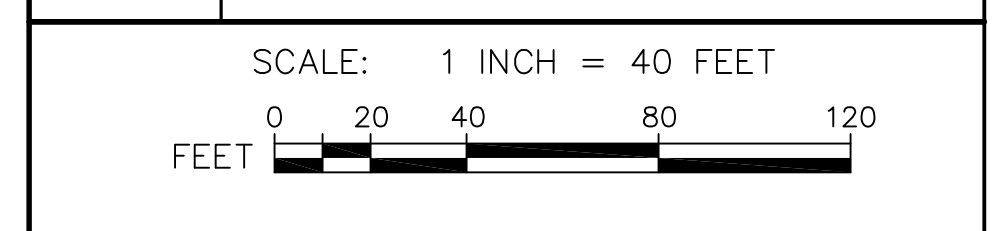
Symbol	City	Label	Description	Luminaire Lumens	Luminaire Watts
■	8	P1	MCGRRAW-EDISON GALN SA3A-840-U-5WQ	12016	93
■	5	P2	MCGRRAW-EDISON GALN SA3A-840-U-SL4	11238	93
■	1	P3	MCGRRAW-EDISON GALN SA3A-840-U-SL2-HSS	9397	93

Calculation Summary						
Label	Units	Avg	Max	Min	Avg/Min	Max/Min
SITE	Fc	1.01	4.6	0.2	N/A	N/A
PARKING	Fc	1.01	4.6	0.2	5.05	23.00

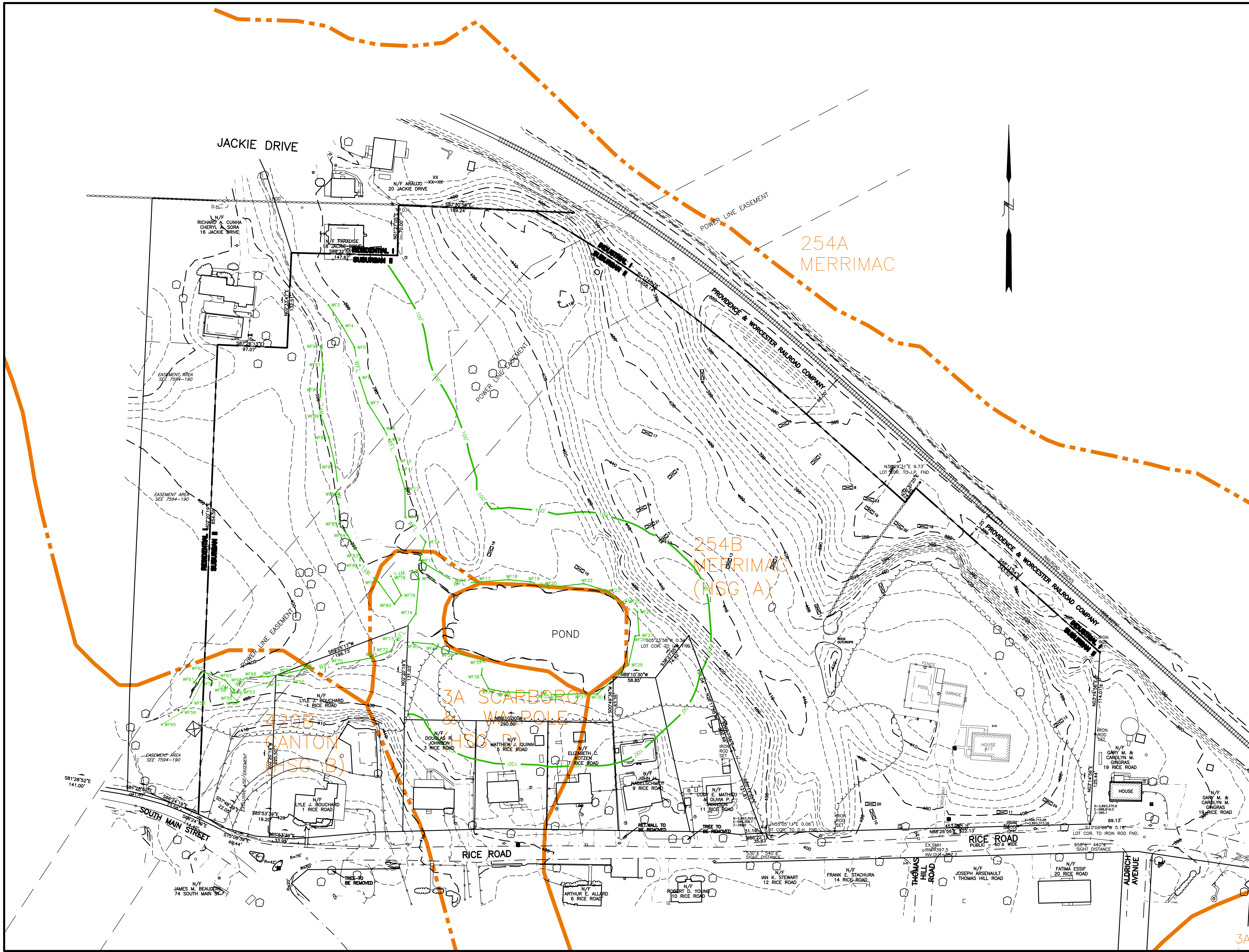
LIGHTING PLAN WAS DONE IN COORDINATION WITH REFLEX LIGHTING AND GRAYBAR ELECTRIC CONTACT: WILLIAM DONAHUE/INSIDE SALES REPRESENTATIVE, WORCESTER, MA OFFICE: (508)-453-4021

**AZIMUTH LAND DESIGN, LLC**  
 Professional Engineers & Erosion Control Specialists  
 325 Donald Lynch Boulevard, Suite 100, Marlborough, MA 01752  
 Telephone: (508)-455-0137 james@azimuthlanddesign.co

CLT. NO.	3151	JOB NO.	186-3234
DATE:	OCTOBER 24, 2023	DWG NO.	ANTAYACURRENT
REVISIONS			
DATE:		DESCRIPTION	
02/19/24		REVISIONS	
04/15/24		REVISIONS	



SITE PLAN OF LAND  
 AT 15 RICE ROAD  
 IN  
 MILLBURY, MASSACHUSETTS  
 PREPARED FOR APPLICANT  
 SJV INVESTMENTS, LLC  
 ONE GOLDEN COURT  
 WESTBOROUGH, MA 01581



**LEGEND**

	WFL	WETLAND EDGE
	100'	100' WETLAND BUFFER ZONE LIMIT
	2'	2' CONTOUR
	10'	10' CONTOUR
	x403.0	EXISTING SPOT GRADE
	#6	EXISTING EDGE OF PAVEMENT
	OHW	EXISTING UTILITY POLE
		OVERHEAD WIRES
		STONE WALL
		TREE
		TREELINE
	23	DEEP OBSERVATION HOLE

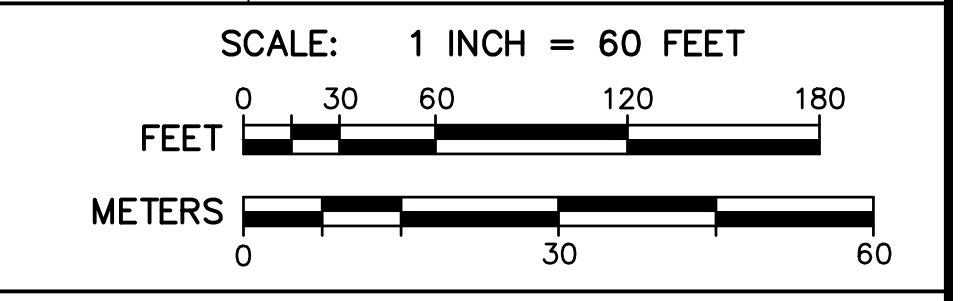


**AZIMUTH LAND DESIGN, LLC**  
Professional Engineers & Erosion Control Specialists  
118 Turnpike Road, Suite 200, Southborough, MA 01772  
Telephone (508) 485-0137 jamest@azimuthlanddesign.co



CLT. NO.	501	JOB NO.	224-501
DATE:	OCTOBER 24, 2023	DWG NO.	RICEROADMILLBURYCURRENT

REVISIONS	
DATE:	DESCRIPTION
12/29/23	TOWN REVIEW
2/19/24	TOWN REVIEW
4/15/24	TOWN REVIEW



**RICE POND VILLAGE  
SITE PLAN OF LAND**  
IN  
**MILLBURY, MASSACHUSETTS**  
PREPARED FOR  
**RICE POND VILLAGE, LLC**  
118 TURNPIKE ROAD, SUITE 200  
SOUTHBOROUGH, MA 01772