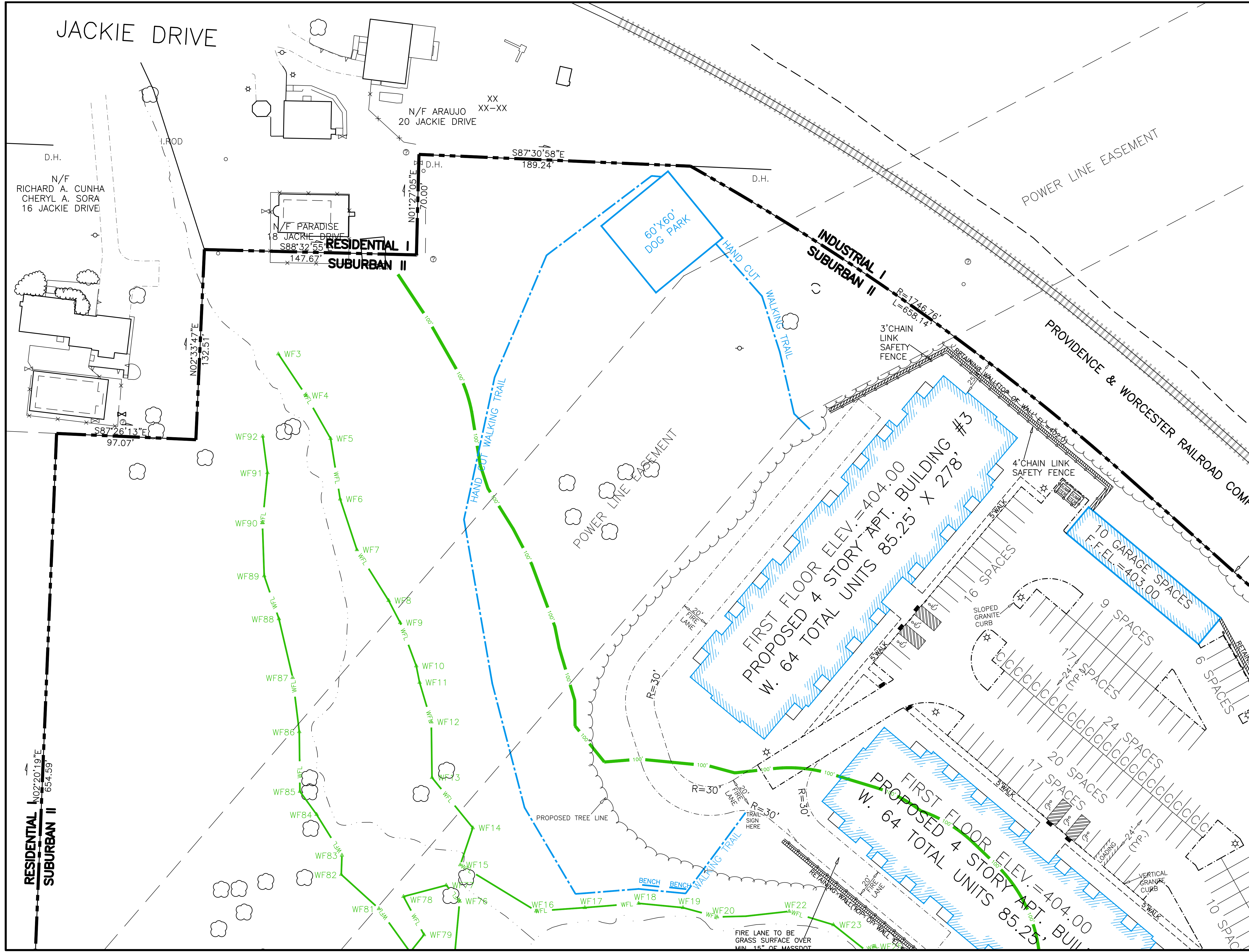


JACKIE DRIVE

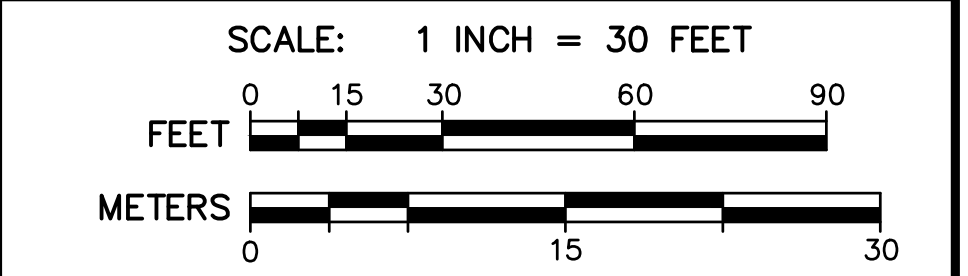


LEGEND

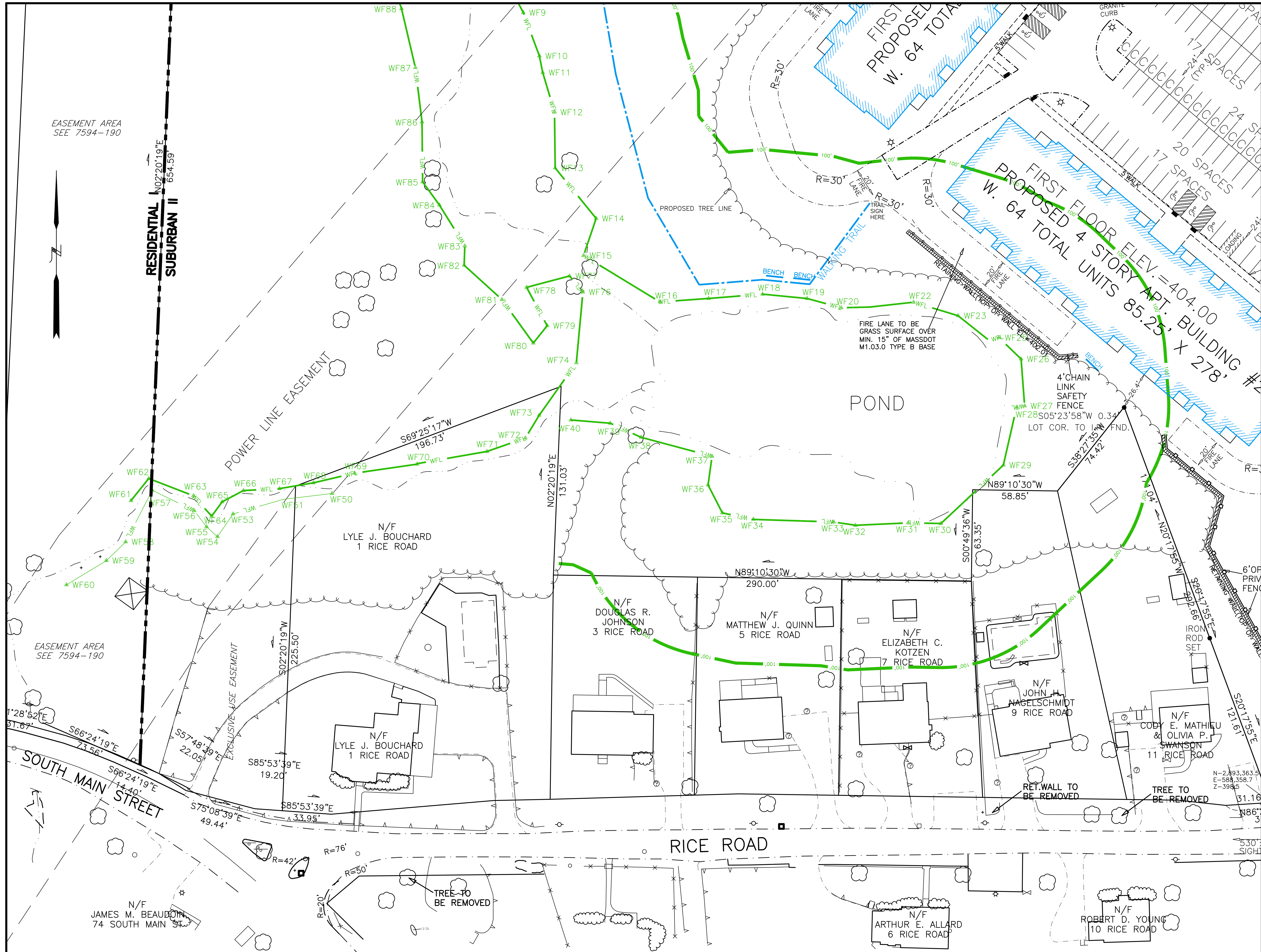
- WFL WETLAND EDGE
- - - 100' WETLAND BUFFER ZONE LIMIT
- - - EXISTING EDGE OF PAVEMENT
- - - PROPOSED SLOPED GRANITE CURBING
- #6_Ø OVERHEAD WIRE
- OHW EXISTING UTILITY POLE
- STONE WALL
- TREE
- PROPOSED TREELINE
- DEEP OBSERVATION HOLE
- PROPOSED WALKING TRAIL
- ETC PROPOSED ELECTRIC, TELEPHONE, CABLE CONDUIT
- PROPOSED STREET LIGHT
- INFILTRATION AREA
- ST PROPOSED STOP SIGN
- PROPOSED HANDICAPPED ACCESSIBLE PARKING SPACE
- PROPOSED GUARDRAIL


AZIMUTH LAND DESIGN, LLC
 Professional Engineers & Erosion Control Specialists
 118 Turnpike Road, Suite 200, Southborough, MA 01772
 Telephone: (508) 485-0137 james@azimuthlanddesign.co

CLT. NO.	501	JOB NO.	224-501
DATE:	OCTOBER 24, 2023	DWG NO.	RICEROADMILLBURYCURRENT
REVISIONS			
DATE:	DESCRIPTION		
12/29/23	TOWN REVIEW		
2/19/24	TOWN REVIEW		
4/15/24	TOWN REVIEW		



RICE POND VILLAGE
SITE PLAN OF LAND
 IN
MILLBURY, MASSACHUSETTS
 PREPARED FOR
RICE POND VILLAGE, LLC
 118 TURNPIKE ROAD, SUITE 200
 SOUTHBOROUGH, MA 01772



LEGEND

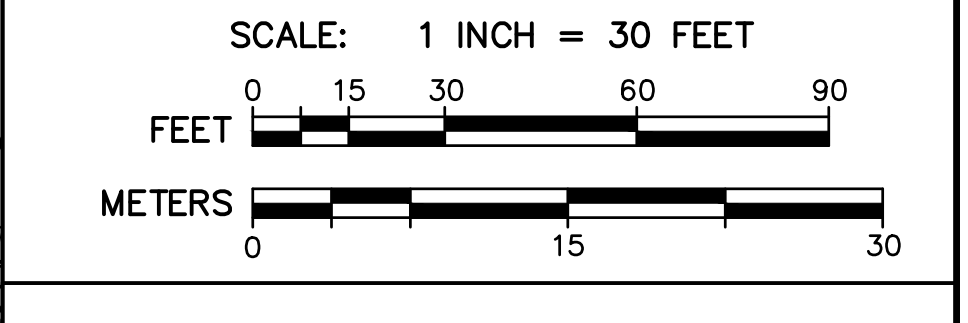
	WFL	WETLAND EDGE
	100'	100' WETLAND BUFFER ZONE LIMIT
		EXISTING EDGE OF PAVEMENT
		PROPOSED SLOPED GRANITE CURBING
	#6 OHW	EXISTING UTILITY POLE OVERHEAD WIRES
		STONE WALL
		TREE
	23	PROPOSED TREELINE
	23	DEEP OBSERVATION HOLE
		PROPOSED WALKING TRAIL
	ETC	PROPOSED ELECTRIC, TELEPHONE, CABLE CONDUIT
		PROPOSED STREET LIGHT
		PROPOSED INFILTRATION STRUCTURE TO RECEIVE CAPTURED RUNOFF
	ST	PROPOSED STOP SIGN
		PROPOSED HANICAPPED ACCESSIBLE PARKING SPACE
		PROPOSED GUARDRAIL



AZIMUTH LAND DESIGN, LLC
 Professional Engineers & Erosion Control Specialists
 118 Turnpike Road, Suite 200, Southborough, MA 01772
 Telephone (508) 485-0137 james@azimuthlanddesign.co

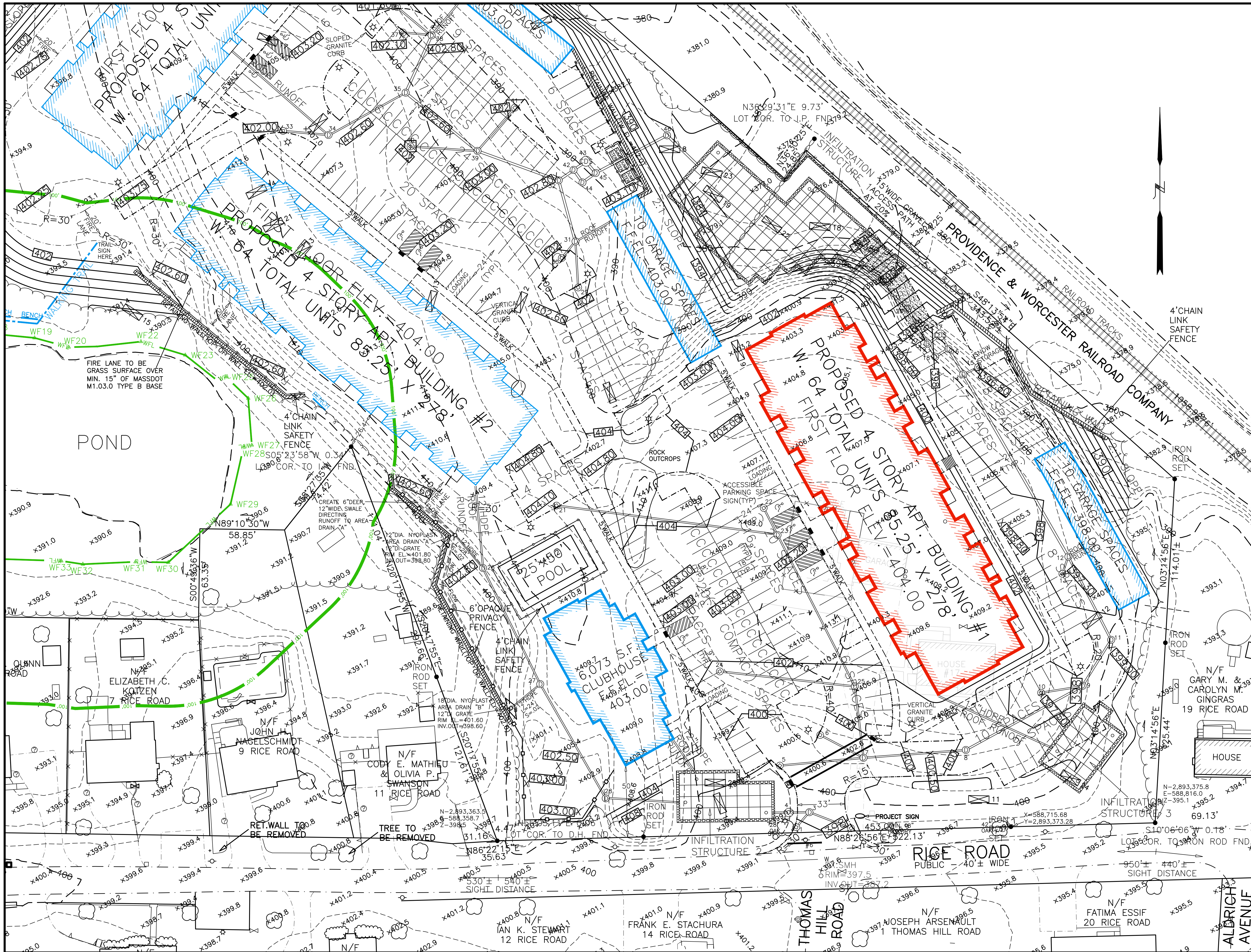


CLT. NO.	501	JOB NO.	224-501
DATE:	OCTOBER 24, 2023	DWG NO.	RICEROADMILLBURYCURRENT
REVISIONS			
DATE:	DESCRIPTION		
12/29/23	TOWN REVIEW		
2/19/24	TOWN REVIEW		
4/15/24	TOWN REVIEW		



RICE POND VILLAGE
SITE PLAN OF LAND
 IN
MILLBURY, MASSACHUSETTS
 PREPARED FOR
RICE POND VILLAGE, LLC
 118 TURNPIKE ROAD, SUITE 200
 SOUTHBOROUGH, MA 01772

SITE LAYOUT PLAN S3



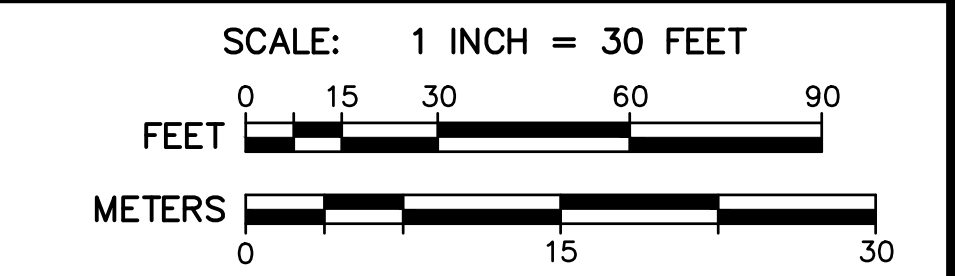
LEGEND

	WFL	WETLAND EDGE
	100'	100' WETLAND BUFFER ZONE LIMIT
	2"	2" CONTOUR
	10'	10' CONTOUR
	400	PROPOSED CONTOUR
	x403.0	EXISTING SPOT GRADE
	x398.50	PROPOSED SPOT GRADE
	⊕	PROPOSED DRAIN MANHOLE
	⊕	PROPOSED CATCHBASIN
	⊕	PROPOSED DOUBLE GRATED CATCHBASIN
	⊕	PROPOSED SEWER MANHOLE
	⊕	PROPOSED UNDERGROUND DRAIN OR SEWER PIPE
	⊕	PROPOSED WATER LINE
	⊕	PROPOSED HYDRANT
	⊕	EXISTING EDGE OF PAVEMENT
	⊕	PROPOSED SLOPED GRANITE CURBING
	#6s	EXISTING UTILITY POLE
	OHW	OVERHEAD WIRES
	OHW	STONE WALL
	OHW	TREE
	OHW	PROPOSED TREELINE
	OHW	DEEP OBSERVATION HOLE
	OHW	PROPOSED WALKING TRAIL
	ETC	ETC
	ETC	PROPOSED ELECTRIC, TELEPHONE, CABLE CONDUIT
	ETC	PROPOSED STREET LIGHT
	ETC	PROPOSED INFILTRATION STRUCTURE TO RECEIVE CAPTURED RUNOFF
	ST	PROPOSED STOP SIGN
	ST	PROPOSED HANDICAPPED ACCESSIBLE PARKING SPACE
	ST	PROPOSED GUARDRAIL

AZIMUTH LAND DESIGN, LLC
Professional Engineers & Erosion Control Specialists
118 Turnpike Road, Suite 200, Southborough, MA 01772
Telephone: (508) 485-0137 jamest@azimuthlanddesign.co

Professional Engineer Seal:
JAMES I. TETREULT
CIVIL
No. 38548

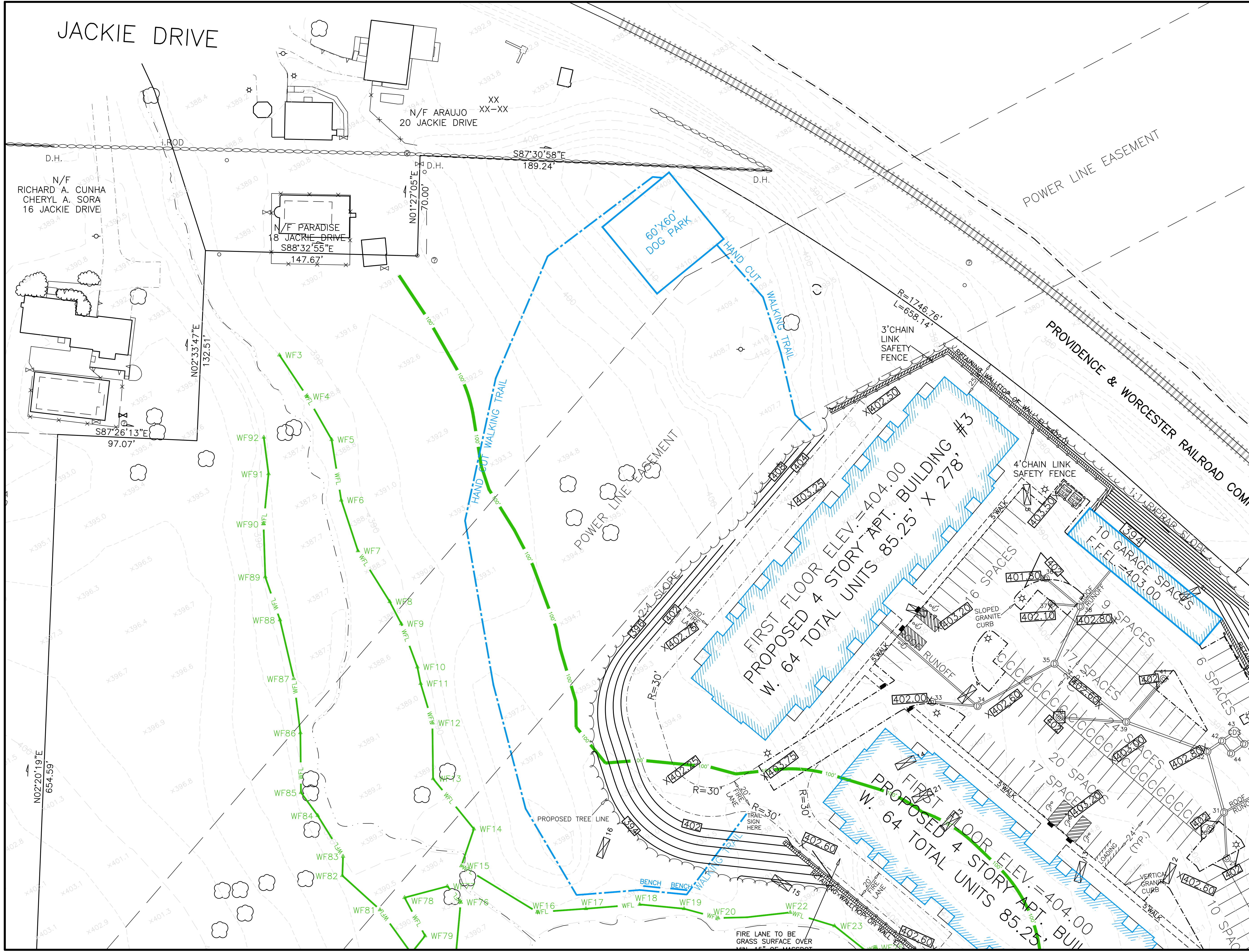
CLT. NO.	501	JOB NO.	224-501
DATE:	OCTOBER 24, 2023	DWG NO.	RICERODMILLBURYCURRENT
REVISIONS			
DATE:	DESCRIPTION		
12/29/23	TOWN REVIEW		
2/19/24	TOWN REVIEW		
4/15/24	TOWN REVIEW		



**RICE POND VILLAGE
SITE PLAN OF LAND
IN
MILLBURY, MASSACHUSETTS**

PREPARED FOR
RICE POND VILLAGE, LLC
118 TURNPIKE ROAD, SUITE 200
SOUTHBOROUGH, MA 01772

JACKIE DRIVE

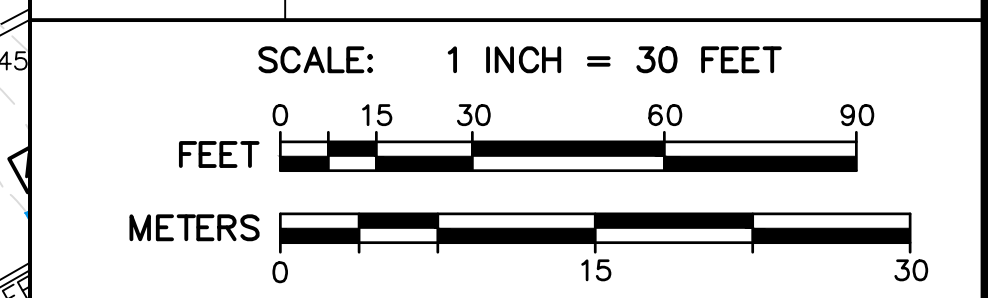


LEGEND

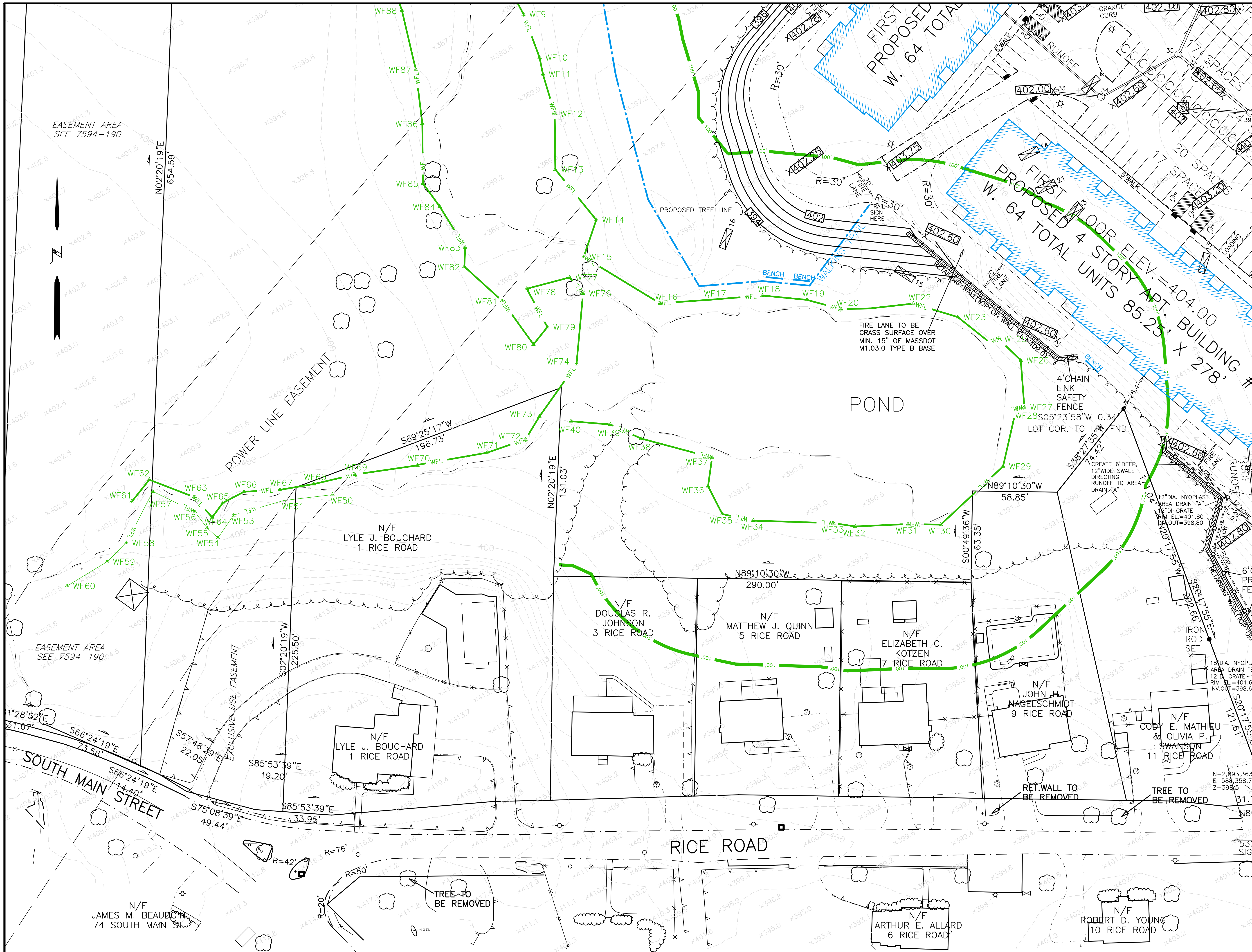
- WFL WETLAND EDGE
- 100' 100' WETLAND BUFFER ZONE LIMIT
- 2' CONTOUR
- 10' CONTOUR
- PROPOSED CONTOUR
- EXISTING SPOT GRADE
- PROPOSED SPOT GRADE
- M PROPOSED DRAIN MANHOLE
- C PROPOSED CATCHBASIN
- D OR S PROPOSED DOUBLE GRATED CATCHBASIN
- S PROPOSED SEWER MANHOLE
- D PROPOSED UNDERGROUND DRAIN OR SEWER PIPE
- W PROPOSED WATER LINE
- PROPOSED HYDRANT
- EXISTING EDGE OF PAVEMENT
- PROPOSED SLOPED GRANITE CURBING
- #6 — OHW EXISTING UTILITY POLE
- OVERHEAD WIRES
- S STONE WALL
- TREE
- PROPOSED TREELINE
- DEEP OBSERVATION HOLE
- PROPOSED WALKING TRAIL
- ETC PROPOSED ELECTRIC, TELEPHONE, CABLE CONDUIT
- PROPOSED STREET LIGHT
- INFILTRATION AREA PROPOSED INFILTRATION STRUCTURE TO RECEIVE CAPTURED RUNOFF
- ST PROPOSED STOP SIGN
- H PROPOSED HANDICAPPED ACCESSIBLE PARKING SPACE
- G PROPOSED GUARDRAIL

AZIMUTH LAND DESIGN, LLC
 Professional Engineers & Erosion Control Specialists
 118 Turnpike Road, Suite 200, Southborough, MA 01772
 Telephone: (508)-455-0137 james@azimuthlanddesign.co

CLT. NO.	501	JOB NO.	224-501
DATE:	OCTOBER 24, 2023	DWG NO.	RICEROADMILLBURYCURRENT
REVISIONS			
DATE:	DESCRIPTION		
12/29/23	TOWN REVIEW		
2/19/24	TOWN REVIEW		
4/15/24	TOWN REVIEW		



RICE POND VILLAGE
 SITE PLAN OF LAND
 IN
 MILLBURY, MASSACHUSETTS
 PREPARED FOR
 RICE POND VILLAGE, LLC
 118 TURNPIKE ROAD, SUITE 200
 SOUTHBOROUGH, MA 01772

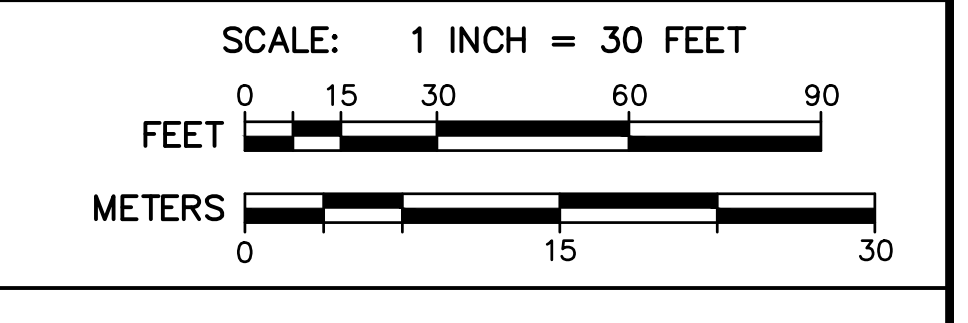


LEGEND

	WFL	WETLAND EDGE
	100'	100' WETLAND BUFFER ZONE LIMIT
	2'	2' CONTOUR
	10'	10' CONTOUR
	400.0	PROPOSED CONTOUR
	X403.0	EXISTING SPOT GRADE
	X398.50	PROPOSED SPOT GRADE
		PROPOSED DRAIN MANHOLE
		PROPOSED CATCHBASIN
		PROPOSED DOUBLE GRATED CATCHBASIN
		PROPOSED SEWER MANHOLE
		PROPOSED UNDERGROUND DRAIN OR SEWER PIPE
		PROPOSED WATER LINE
		PROPOSED HYDRANT
		EXISTING EDGE OF PAVEMENT
		PROPOSED SLOPED GRANITE CURBING
	#6d	EXISTING UTILITY POLE
	OHW	OVERHEAD WIRES
		STONE WALL
		TREE
	23	PROPOSED TREELINE
		DEEP OBSERVATION HOLE
		PROPOSED WALKING TRAIL
	ETC	PROPOSED ELECTRIC, TELEPHONE, CABLE CONDUIT
		PROPOSED STREET LIGHT
		PROPOSED INFILTRATION STRUCTURE TO RECEIVE CAPTURED RUNOFF
	ST	PROPOSED STOP SIGN
		PROPOSED HANDICAPPED ACCESSIBLE PARKING SPACE
		PROPOSED GUARDRAIL

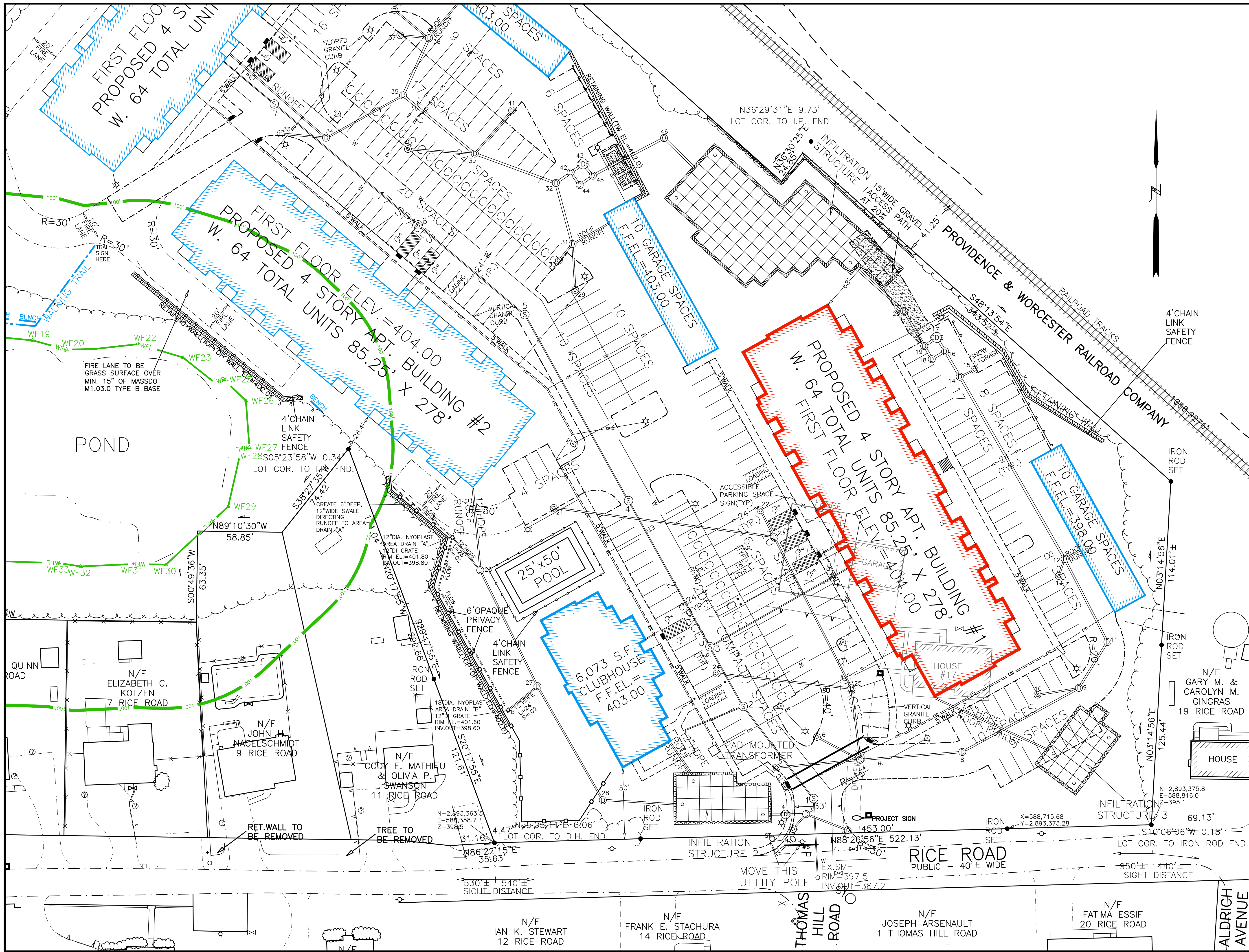
AZIMUTH LAND DESIGN, LLC
Professional Engineers & Erosion Control Specialists
118 Turnpike Road, Suite 200, Southborough, MA 01772
Telephone (508) 485-0137 jarnest@azimuthlanddesign.co

CLT. NO.	501	JOB NO.	224-501
DATE:	OCTOBER 24, 2023	DWG NO.	RICERODMILLBURYCURRENT
REVISIONS			
DATE:	DESCRIPTION		
12/29/23	TOWN REVIEW		
2/19/24	TOWN REVIEW		
4/15/24	TOWN REVIEW		



RICE POND VILLAGE
SITE PLAN OF LAND
IN
MILLBURY, MASSACHUSETTS
PREPARED FOR
RICE POND VILLAGE, LLC
118 TURNPIKE ROAD, SUITE 200
SOUTHBOROUGH, MA 01772

GRADING PLAN G3



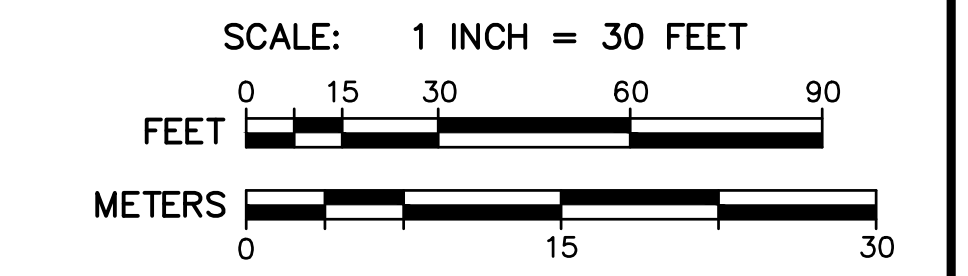
LEGEND

	WFL	WETLAND EDGE
	100'	100' WETLAND BUFFER ZONE LIMIT
	⊕	PROPOSED DRAIN MANHOLE
	⊕	PROPOSED DOUBLE GRATED CATCHBASIN
	⊕	PROPOSED SEWER MANHOLE
	⊕	PROPOSED UNDERGROUND DRAIN OR SEWER PIPE
	⊕	PROPOSED WATER LINE
	⊕	PROPOSED HYDRANT
	- - -	EXISTING EDGE OF PAVEMENT
	- - -	PROPOSED SLOPED GRANITE CURBING
	⊕	EXISTING UTILITY POLE
	⊕	OVERHEAD WIRES
	⊕	STONE WALL
	⊕	TREE
	⊕	PROPOSED TREELINE
	⊕	DEEP OBSERVATION HOLE
	⊕	PROPOSED WALKING TRAIL
	⊕	ETC
	⊕	PROPOSED ELECTRIC, TELEPHONE, CABLE CONDUIT
	⊕	PROPOSED STREET LIGHT
	⊕	PROPOSED INFILTRATION STRUCTURE TO RECEIVE CAPTURED RUNOFF
	⊕	PROPOSED STOP SIGN
	⊕	PROPOSED HANDICAPPED ACCESSIBLE PARKING SPACE
	⊕	PROPOSED GUARDRAIL

AZIMUTH LAND DESIGN, LLC
Professional Engineers & Erosion Control Specialists
118 Turnpike Road, Suite 200, Southborough, MA 01772
Telephone: (508) 455-0137 james@azimuthlanddesign.co

JAMES L. TETRAULT
CIVIL ENGINEER
No. 38548

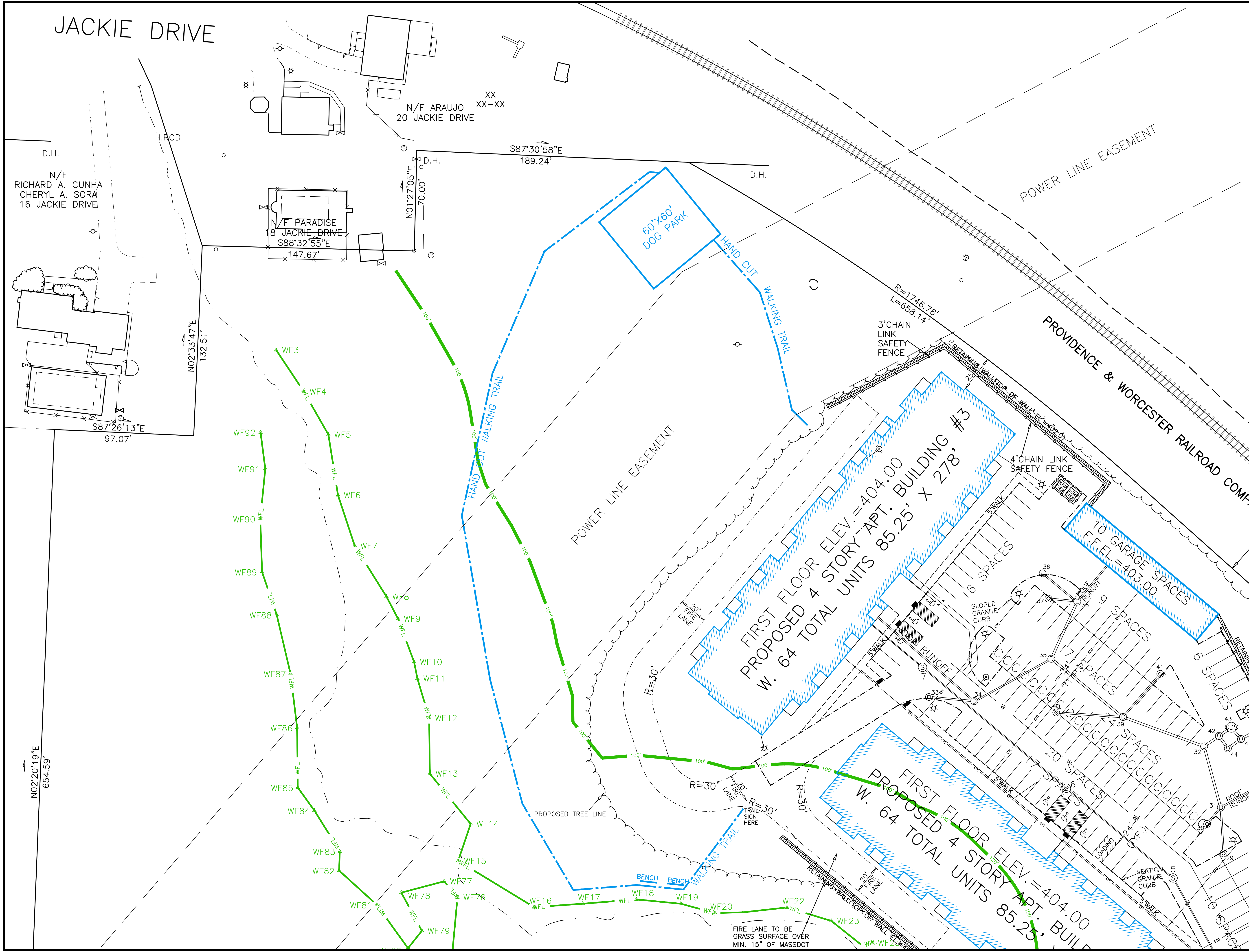
CLT. NO.	501	JOB NO.	224-501
DATE:	OCTOBER 24, 2023	DWG NO.	RICERODMILLBURYCURRENT
REVISIONS			
DATE:	DESCRIPTION		
12/29/23	TOWN REVIEW		
2/19/24	TOWN REVIEW		
4/15/24	TOWN REVIEW		



RICE POND VILLAGE
SITE PLAN OF LAND
IN
MILLBURY, MASSACHUSETTS
PREPARED FOR
RICE POND VILLAGE, LLC
118 TURNPIKE ROAD, SUITE 200
SOUTHBOROUGH, MA 01772

UTILITY PLAN U1

JACKIE DRIVE



LEGEND

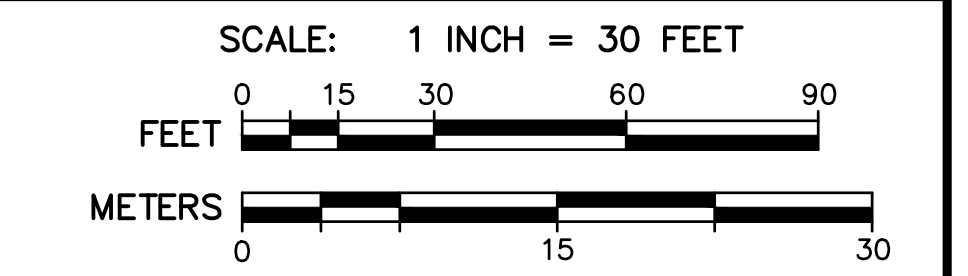
- WFL WETLAND EDGE
- - - 100' WETLAND BUFFER ZONE LIMIT
- PROPOSED DRAIN MANHOLE
- PROPOSED DOUBLE GRATED CATCHBASIN
- PROPOSED SEWER MANHOLE
- PROPOSED UNDERGROUND DRAIN OR SEWER PIPE
- PROPOSED WATER LINE
- PROPOSED HYDRANT
- EXISTING EDGE OF PAVEMENT
- PROPOSED SLOPED GRANITE CURBING
- EXISTING UTILITY POLE
- OVERHEAD WIRES
- STONE WALL
- TREE
- PROPOSED TREELINE
- DEEP OBSERVATION HOLE
- PROPOSED WALKING TRAIL
- ETC
- PROPOSED ELECTRIC, TELEPHONE, CABLE CONDUIT
- PROPOSED STREET LIGHT
- PROPOSED INFILTRATION STRUCTURE TO RECEIVE CAPTURED RUNOFF
- PROPOSED STOP SIGN
- PROPOSED HANDICAPPED ACCESSIBLE PARKING SPACE
- PROPOSED GUARDRAIL

AZIMUTH LAND DESIGN, LLC
 Professional Engineers & Erosion Control Specialists
 118 Turnpike Road, Suite 200, Southborough, MA 01772
 Telephone: (508)-485-0137 james@azimuthtlanddesign.co

CLT. NO.	501	JOB NO.	224-501
----------	-----	---------	---------

DATE:	OCTOBER 24, 2023	DWG NO.	RICEROADMILLBURYCURRENT
-------	------------------	---------	-------------------------

REVISIONS	
DATE:	DESCRIPTION
12/29/23	TOWN REVIEW
2/19/24	TOWN REVIEW
4/15/24	TOWN REVIEW



RICE POND VILLAGE
 SITE PLAN OF LAND
 IN
 MILLBURY, MASSACHUSETTS
 PREPARED FOR
 RICE POND VILLAGE, LLC
 118 TURNPIKE ROAD, SUITE 200
 SOUTHBOROUGH, MA 01772