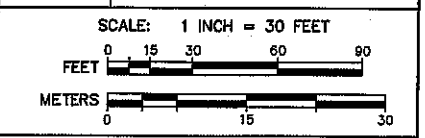


LEGEND

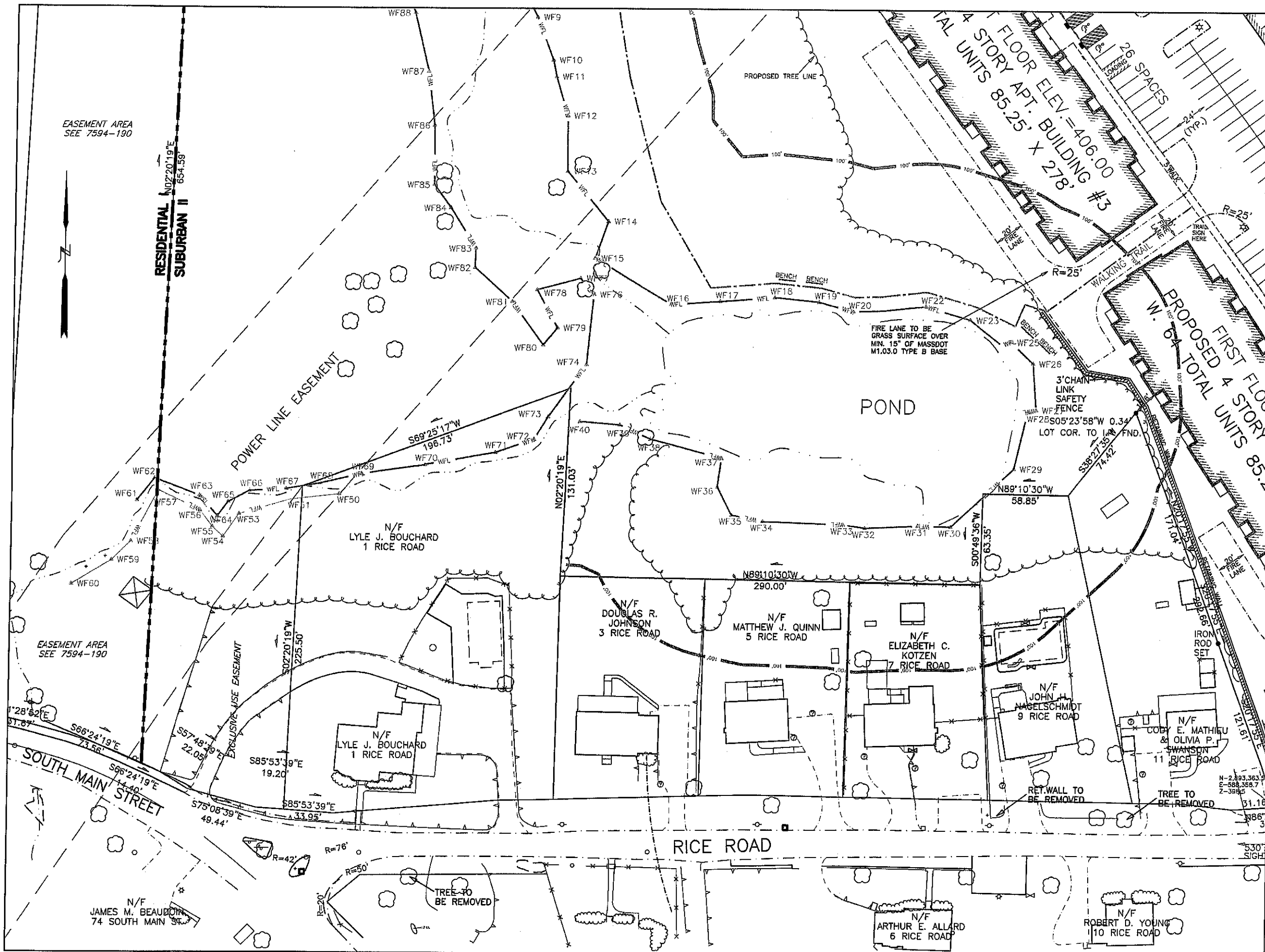
WFL	WETLAND EDGE
100'	100' WETLAND BUFFER ZONE LIMIT
---	EXISTING EDGE OF PAVEMENT
- - - -	PROPOSED SLOPED GRANITE CURBING
#6	EXISTING UTILITY POLE
OHW	OVERHEAD WIRES
---	STONE WALL
⊙	TREE
~	PROPOSED TREELINE
⊠	DEEP OBSERVATION HOLE
---	PROPOSED WALKING TRAIL
ETC	PROPOSED ELECTRIC, TELEPHONE, CABLE CONDUIT
⊙	PROPOSED STREET LIGHT
⊠	PROPOSED INFILTRATION STRUCTURE TO RECEIVE CAPTURED RUNOFF
ST ⊙	PROPOSED STOP SIGN
⊠	PROPOSED HANDICAPPED ACCESSIBLE PARKING SPACE
---	PROPOSED GUARDRAIL

AZIMUTH LAND DESIGN, LLC
 Professional Engineers & Erosion Control Specialists
 118 Turnpike Road, Suite 200, Southborough, MA 01772
 Telephone: (508) 455-0187 james@azimuthlanddesign.com

CLT. NO.	501	JOB NO.	224-501
DATE:	OCTOBER 24, 2023	DWG NO.	RICROADMILLBURYCURRENT
REVISIONS		DESCRIPTION	
DATE:	12/29/23	TOWN REVIEW	
	2/19/24	TOWN REVIEW	



RICE POND VILLAGE
 SITE PLAN OF LAND
 IN
 MILLBURY, MASSACHUSETTS
 PREPARED FOR
 SJV INVESTMENTS, LLC
 118 TURNPIKE ROAD, SUITE 200
 SOUTHBOROUGH, MA 01772

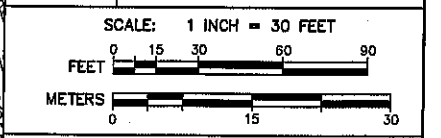


LEGEND

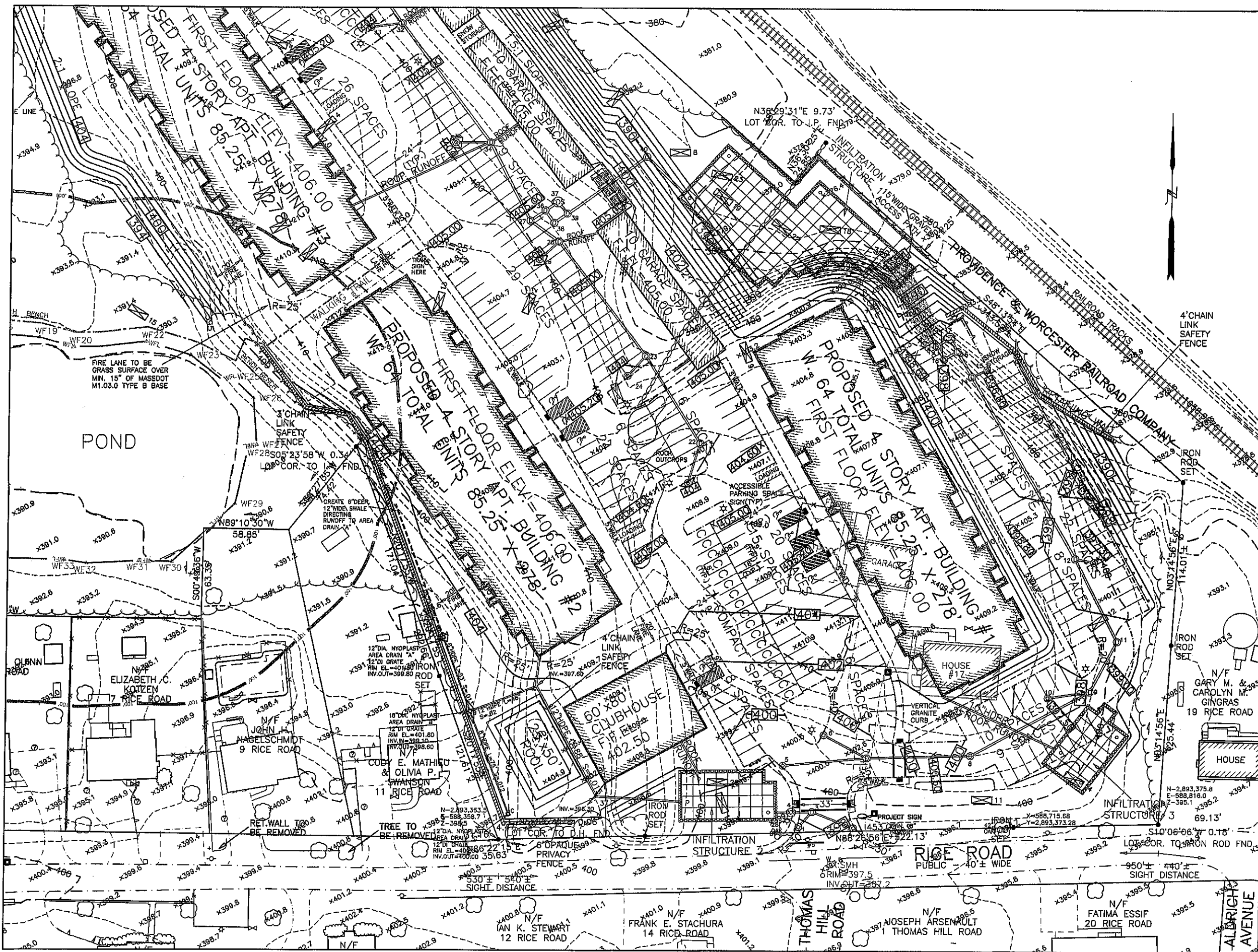
- WETLAND EDGE
- 100' WETLAND BUFFER ZONE LIMIT
- EXISTING EDGE OF PAVEMENT
- PROPOSED SLOPED GRANITE CURBING
- EXISTING UTILITY POLE OVERHEAD WIRES
- STONE WALL
- TREE
- PROPOSED TREELINE
- DEEP OBSERVATION HOLE
- PROPOSED WALKING TRAIL
- PROPOSED ELECTRIC, TELEPHONE, CABLE CONDUIT
- PROPOSED STREET LIGHT
- PROPOSED INFILTRATION STRUCTURE TO RECEIVE CAPTURED RUNOFF
- PROPOSED STOP SIGN
- PROPOSED HANDICAPPED ACCESSIBLE PARKING SPACE
- PROPOSED GUARDRAIL

AZIMUTHI LAND DESIGN, LLC
 Professional Engineers & Erosion Control Specialists
 118 Turnpike Road, Suite 200, Southborough, MA 01772
 Telephone (508) 485-0137 jama@azimulanddesign.com

CLT. NO.	501	JOB NO.	224-501
DATE:	OCTOBER 24, 2023	DWG NO.	RICEROADMILLBURYCURRENT
REVISIONS		DESCRIPTION	
DATE:	12/29/23	TOWN REVIEW	
DATE:	2/19/24	TOWN REVIEW	



RICE POND VILLAGE
SITE PLAN OF LAND
 IN
MILLBURY, MASSACHUSETTS
 PREPARED FOR
SJV INVESTMENTS, LLC
 118 TURNPIKE ROAD, SUITE 200
 SOUTHBOROUGH, MA 01772

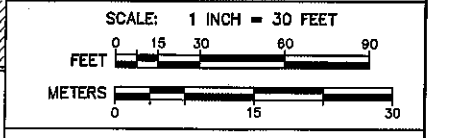


LEGEND

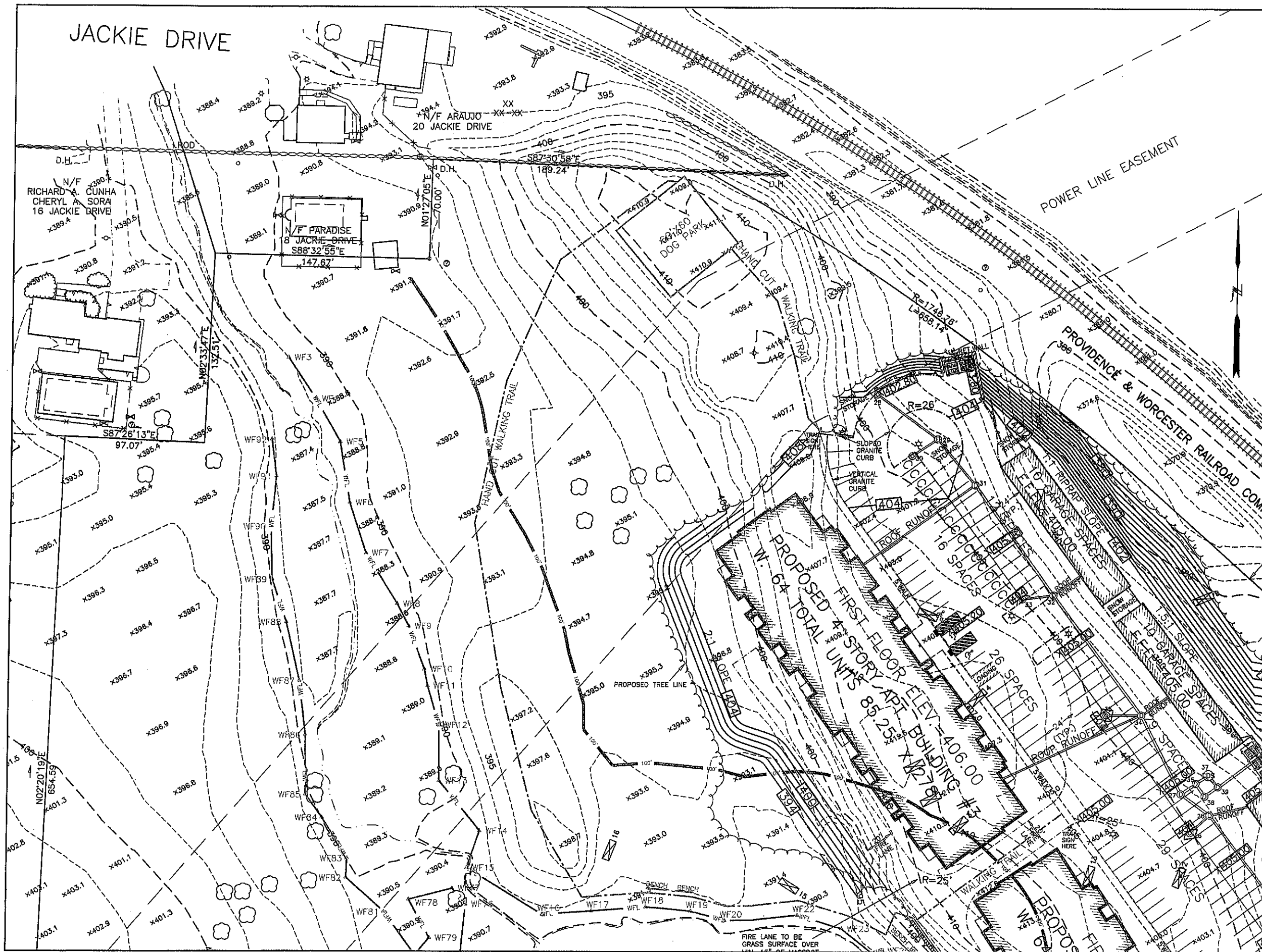
	WETLAND EDGE
	100' WETLAND BUFFER ZONE LIMIT
	2' CONTOUR
	PROPOSED CONTOUR
	EXISTING SPOT GRADE
	PROPOSED SPOT GRADE
	PROPOSED DRAIN MANHOLE
	PROPOSED CATCHBASIN
	PROPOSED DOUBLE GRATED CATCHBASIN
	PROPOSED SEWER MANHOLE
	PROPOSED UNDERGROUND DRAIN OR SEWER PIPE
	PROPOSED WATER LINE
	PROPOSED HYDRANT
	EXISTING EDGE OF PAVEMENT
	PROPOSED SLOPED GRANITE CURBING
	EXISTING UTILITY POLE
	OVERHEAD WIRES
	STONE WALL
	TREE
	PROPOSED TREELINE
	DEEP OBSERVATION HOLE
	PROPOSED WALKING TRAIL
	PROPOSED ELECTRIC TELEPHONE CABLE CONDUIT
	PROPOSED STREET LIGHT
	PROPOSED INFILTRATION STRUCTURE TO RECEIVE CAPTURED RUNOFF
	PROPOSED STOP SIGN
	PROPOSED HANDICAPPED ACCESSIBLE PARKING SPACE
	PROPOSED GUARDRAIL

AZIMUTH LAND DESIGN, LLC
 Professional Engineers & Erosion Control Specialists
 118 Turnpike Road, Suite 200, Southborough, MA 01772
 Telephone: (508) 485-0187 jmes@aazimutlanddesign.com

CLT. NO.	501	JOB NO.	224-501
DATE:	OCTOBER 24, 2023	DWG. NO.	RICEROADMILLBURYCURRENT
REVISIONS			
DATE:	12/29/23	DESCRIPTION:	TOWN REVIEW
	2/19/24		TOWN REVIEW



**RICE POND VILLAGE
 SITE PLAN OF LAND**
 IN
MILLBURY, MASSACHUSETTS
 PREPARED FOR
SJV INVESTMENTS, LLC
 118 TURNPIKE ROAD, SUITE 200
 SOUTHBOROUGH, MA 01772

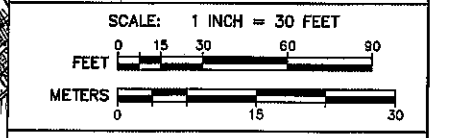


LEGEND

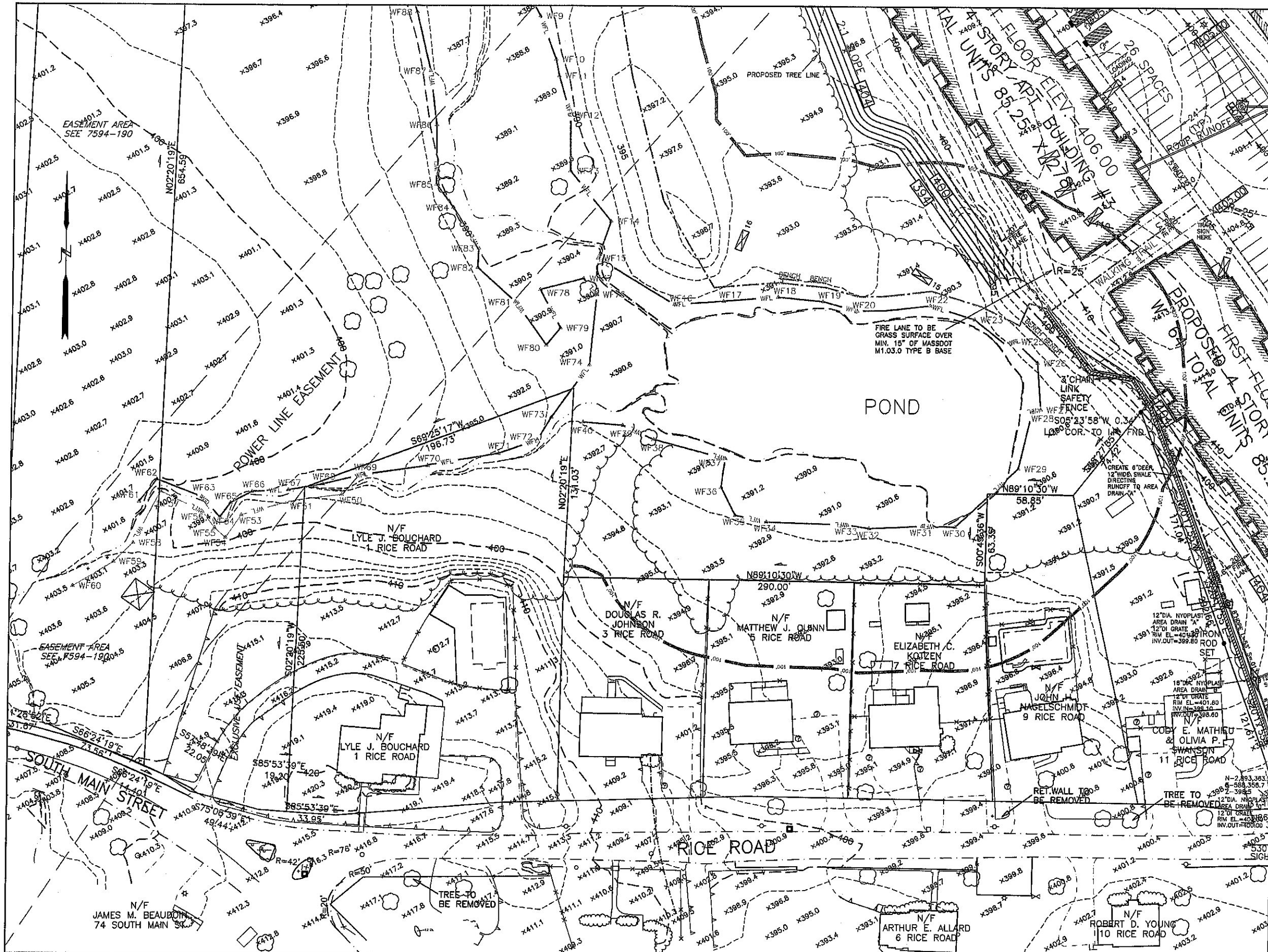
WFL	WETLAND EDGE
100'	100' WETLAND BUFFER ZONE LIMIT
400	2' CONTOUR
400.0	PROPOSED CONTOUR
X403.0	EXISTING SPOT GRADE
X388.50	PROPOSED SPOT GRADE
⊙	PROPOSED DRAIN MANHOLE
⊕	PROPOSED DOUBLE GRATED CATCHBASIN
⊕	PROPOSED SEWER MANHOLE
⊕	PROPOSED UNDERGROUND DRAIN OR SEWER PIPE
W	PROPOSED WATER LINE
⊕	PROPOSED HYDRANT
---	EXISTING EDGE OF PAVEMENT
---	PROPOSED SLOPED GRANITE CURBING
#6	EXISTING UTILITY POLE
OHW	OVERHEAD WIRES
---	STONE WALL
⊕	TREE
⊕	PROPOSED TREELINE
⊕	DEEP OBSERVATION HOLE
---	PROPOSED WALKING TRAIL
ETC	PROPOSED ELECTRIC, TELEPHONE, CABLE CONDUIT
⊕	PROPOSED STREET LIGHT
⊕	PROPOSED INFILTRATION STRUCTURE TO RECEIVE CAPTURED RUNOFF
ST	PROPOSED STOP SIGN
⊕	PROPOSED HANDICAPPED ACCESSIBLE PARKING SPACE
⊕	PROPOSED GUARDRAIL

AZIMUTH LAND DESIGN, LLC
 Professional Engineers & Erosion Control Specialists
 118 Turnpike Road, Suite 200, Southborough, MA 01772
 Telephone 508-485-0137 james@azimuthlanddesign.com

CLT. NO.	501	JOB NO.	224-501
DATE:	OCTOBER 24, 2023	DWG NO.	RICROADMILLBURYCURRENT
REVISIONS			
DATE:	DESCRIPTION		
12/29/23	TOWN REVIEW		
2/19/24	TOWN REVIEW		



**RICE POND VILLAGE
 SITE PLAN OF LAND
 IN
 MILLBURY, MASSACHUSETTS**
 PREPARED FOR
SJV INVESTMENTS, LLC
 118 TURNPIKE ROAD, SUITE 200
 SOUTHBOROUGH, MA 01772



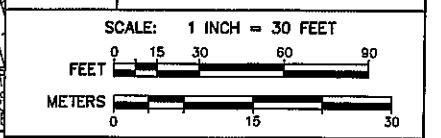
LEGEND

WFL	WETLAND EDGE
100'	100' WETLAND BUFFER ZONE LIMIT
400	2' CONTOUR
X403.0	PROPOSED CONTOUR
X388.50	EXISTING SPOT GRADE
⊙	PROPOSED SPOT GRADE
⊙	PROPOSED DRAIN MANHOLE
⊙	PROPOSED CATCHBASIN
⊙	PROPOSED DOUBLE GRATED CATCHBASIN
⊙	PROPOSED SEWER MANHOLE
⊙	PROPOSED UNDERGROUND DRAIN OR SEWER PIPE
W	PROPOSED WATER LINE
⊙	PROPOSED HYDRANT
---	EXISTING EDGE OF PAVEMENT
---	PROPOSED SLOPED GRANITE CURBING
#6p	EXISTING UTILITY POLE
OHW	OVERHEAD WIRES
---	STONE WALL
⊙	TREE
---	PROPOSED TREELINE
⊙	DEEP OBSERVATION HOLE
---	PROPOSED WALKING TRAIL
ETC	PROPOSED ELECTRIC TELEPHONE, CABLE CONDUIT
⊙	PROPOSED STREET LIGHT
⊙	PROPOSED INFILTRATION STRUCTURE TO RECEIVE CAPTURED RUNOFF
ST	PROPOSED STOP SIGN
⊙	PROPOSED HANDICAPPED ACCESSIBLE PARKING SPACE
---	PROPOSED GUARDRAIL

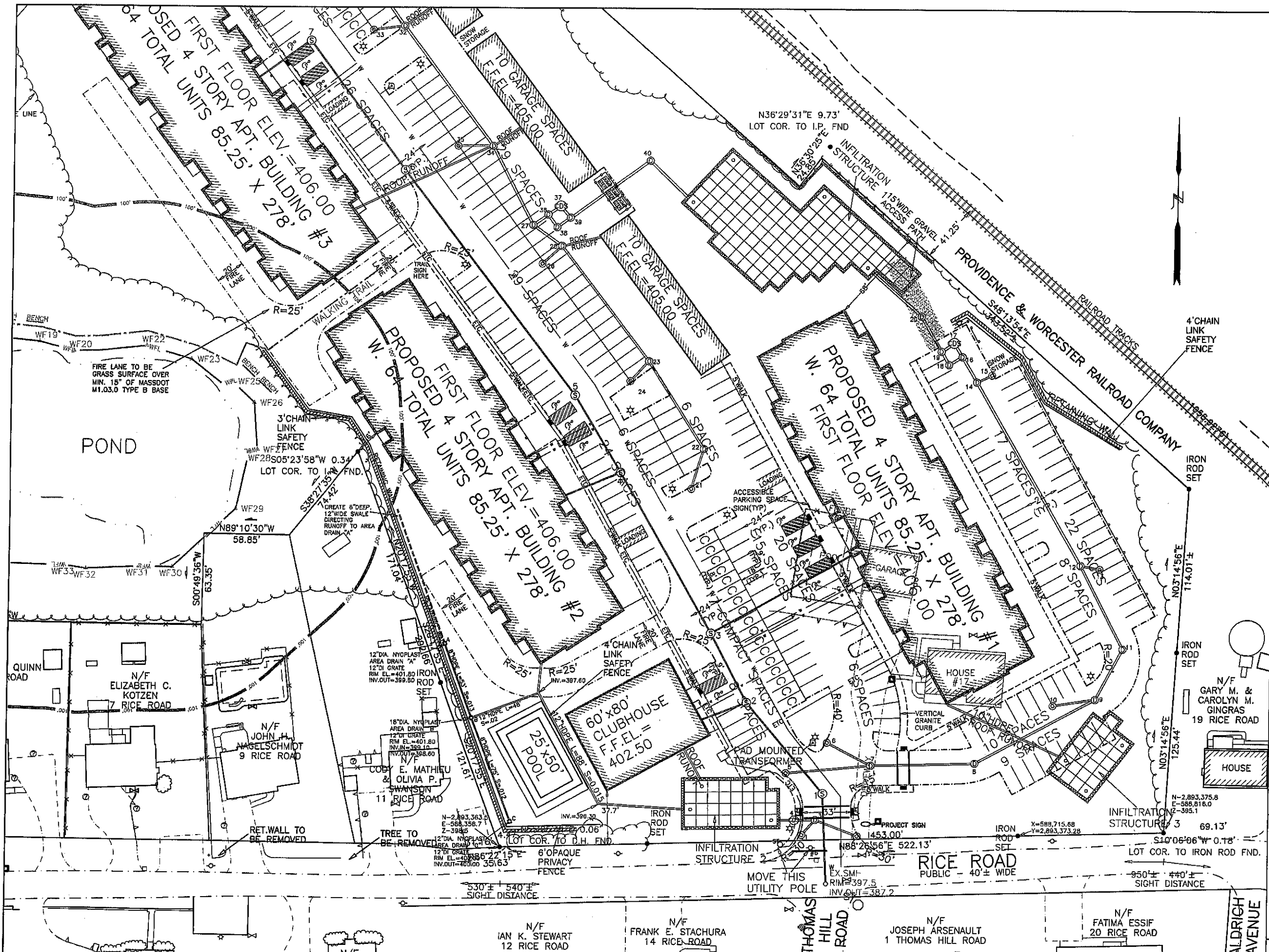
AZIMUTH LAND DESIGN, LLC
 Professional Engineers & Erosion Control Specialists
 118 Turnpike Road, Suite 200, Southborough, MA 01772
 Telephone (508)-485-0137 jpm@azimuthlanddesign.co

CLT. NO.	501	JOB NO.	224-501
DATE:	OCTOBER 24, 2023	DWG NO.	RICEROADMILLBURYCURRENT

DATE:	REVISIONS DESCRIPTION
12/29/23	TOWN REVIEW
2/19/24	TOWN REVIEW



RICE POND VILLAGE
 SITE PLAN OF LAND
 IN
 MILLBURY, MASSACHUSETTS
 PREPARED FOR
SJV INVESTMENTS, LLC
 118 TURNPIKE ROAD, SUITE 200
 SOUTHBOROUGH, MA 01772

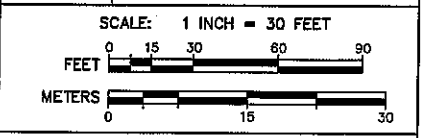


LEGEND

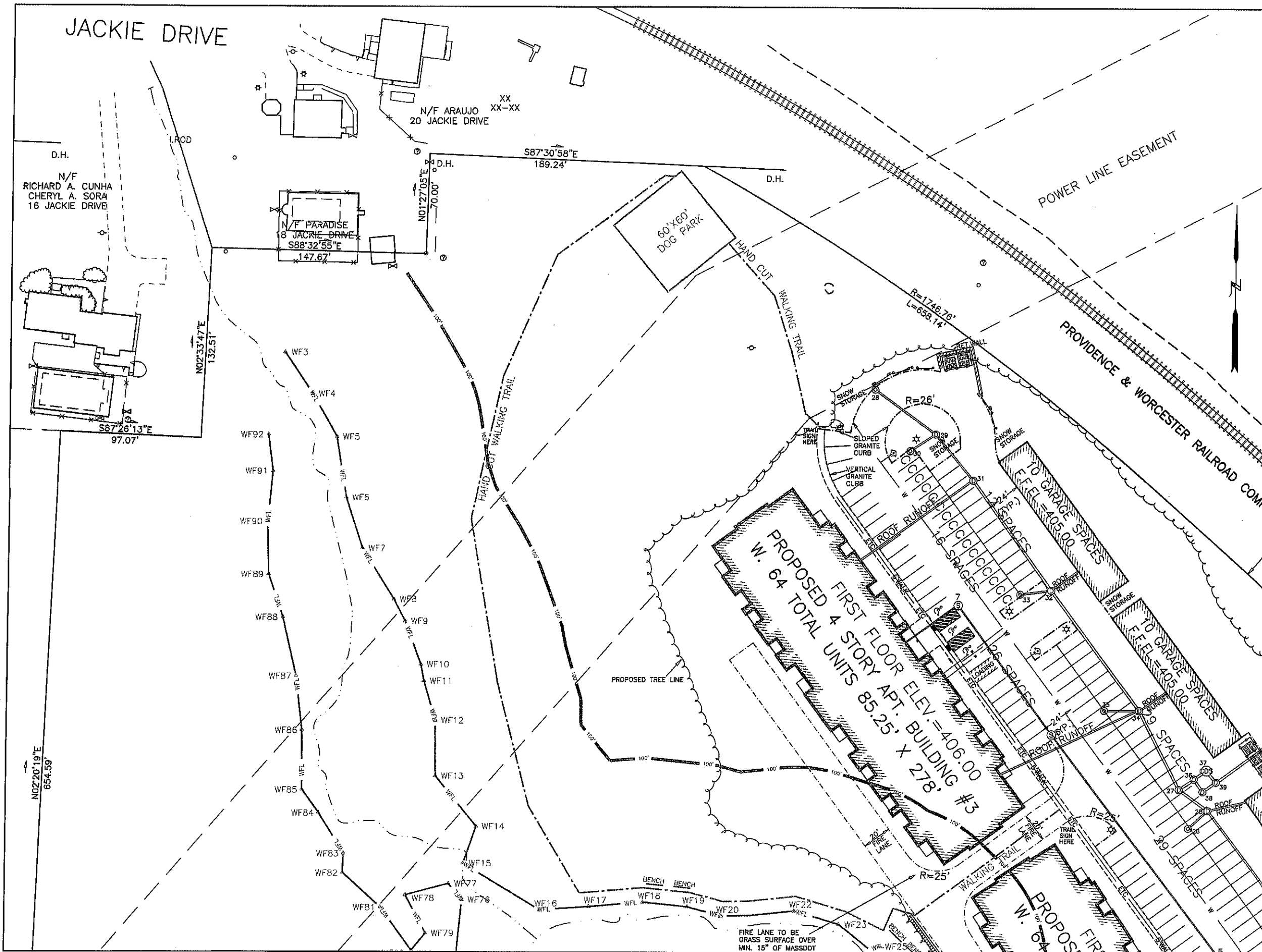
- WFL 100' WETLAND EDGE
- 100' WETLAND BUFFER ZONE LIMIT
- ⊕ PROPOSED DRAIN MANHOLE
- ⊕ PROPOSED CATCHBASIN
- ⊕ OR ⊕ PROPOSED DOUBLE GRATED CATCHBASIN
- ⊕ PROPOSED SEWER MANHOLE
- ⊕ PROPOSED UNDERGROUND DRAIN OR SEWER PIPE
- W PROPOSED WATER LINE
- ⊕ PROPOSED HYDRANT
- - - EXISTING EDGE OF PAVEMENT
- - - PROPOSED SLOPED GRANITE CURBING
- #6 ⚡ EXISTING UTILITY POLE
- - - OVERHEAD WIRES
- STONE WALL
- ☺ TREE
- ~ PROPOSED TREELINE
- ⊕ DEEP OBSERVATION HOLE
- - - PROPOSED WALKING TRAIL
- ETC PROPOSED ELECTRIC, TELEPHONE, CABLE CONDUIT
- ⊕ PROPOSED STREET LIGHT
- INFILTRATION AREA PROPOSED INFILTRATION STRUCTURE TO RECEIVE CAPTURED RUNOFF
- ST ⊕ PROPOSED STOP SIGN
- ⊕ PROPOSED HANDICAPPED ACCESSIBLE PARKING SPACE
- - - PROPOSED GUARDRAIL

AZIMUTH LAND DESIGN, LLC
 Professional Engineers & Erosion Control Specialists
 118 Turnpike Road, Suite 200, Southborough, MA 01772
 Telephone (508) 485-0137 james@azimuthtlanddesigns.co

CLT. NO.	501	JOB NO.	224-501
DATE:	OCTOBER 24, 2023	DWG NO.	RICEROADMILLBURYCURRENT
DATE:	12/29/23	REVISIONS DESCRIPTION	TOWN REVIEW
DATE:	2/19/24	REVISIONS DESCRIPTION	TOWN REVIEW




**RICE POND VILLAGE
 SITE PLAN OF LAND
 IN
 MILLBURY, MASSACHUSETTS**
 PREPARED FOR
SJV INVESTMENTS, LLC
 118 TURNPIKE ROAD, SUITE 200
 SOUTHBOROUGH, MA 01772



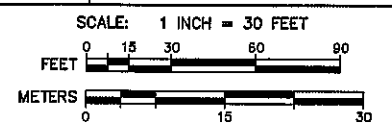
LEGEND

- WFL WETLAND EDGE
- 100' 100' WETLAND BUFFER ZONE LIMIT
- ⊕ PROPOSED DRAIN MANHOLE
- ⊙ PROPOSED CATCHBASIN
- ⊕ OR ⊙ PROPOSED DOUBLE GRATED CATCHBASIN
- ⊕ PROPOSED SEWER MANHOLE
- ⊙ PROPOSED UNDERGROUND DRAIN OR SEWER PIPE
- W PROPOSED WATER LINE
- ⊕ PROPOSED HYDRANT
- - - EXISTING EDGE OF PAVEMENT
- - - PROPOSED SLOPED GRANITE CURBING
- #6 Ⓟ EXISTING UTILITY POLE
- OHW OVERHEAD WIRES
- STONE WALL
- ⊕ TREE
- ⊕ PROPOSED TREELINE
- ⊕ DEEP OBSERVATION HOLE
- ⊕ PROPOSED WALKING TRAIL
- ETC PROPOSED ELECTRIC, TELEPHONE, CABLE CONDUIT
- ⊕ PROPOSED STREET LIGHT
- ⊕ PROPOSED INFILTRATION STRUCTURE TO RECEIVE CAPTURED RUNOFF
- INFILTRATION AREA
- ST ⊕ PROPOSED STOP SIGN
- ⊕ PROPOSED HANDICAPPED ACCESSIBLE PARKING SPACE
- - - PROPOSED GUARDRAIL

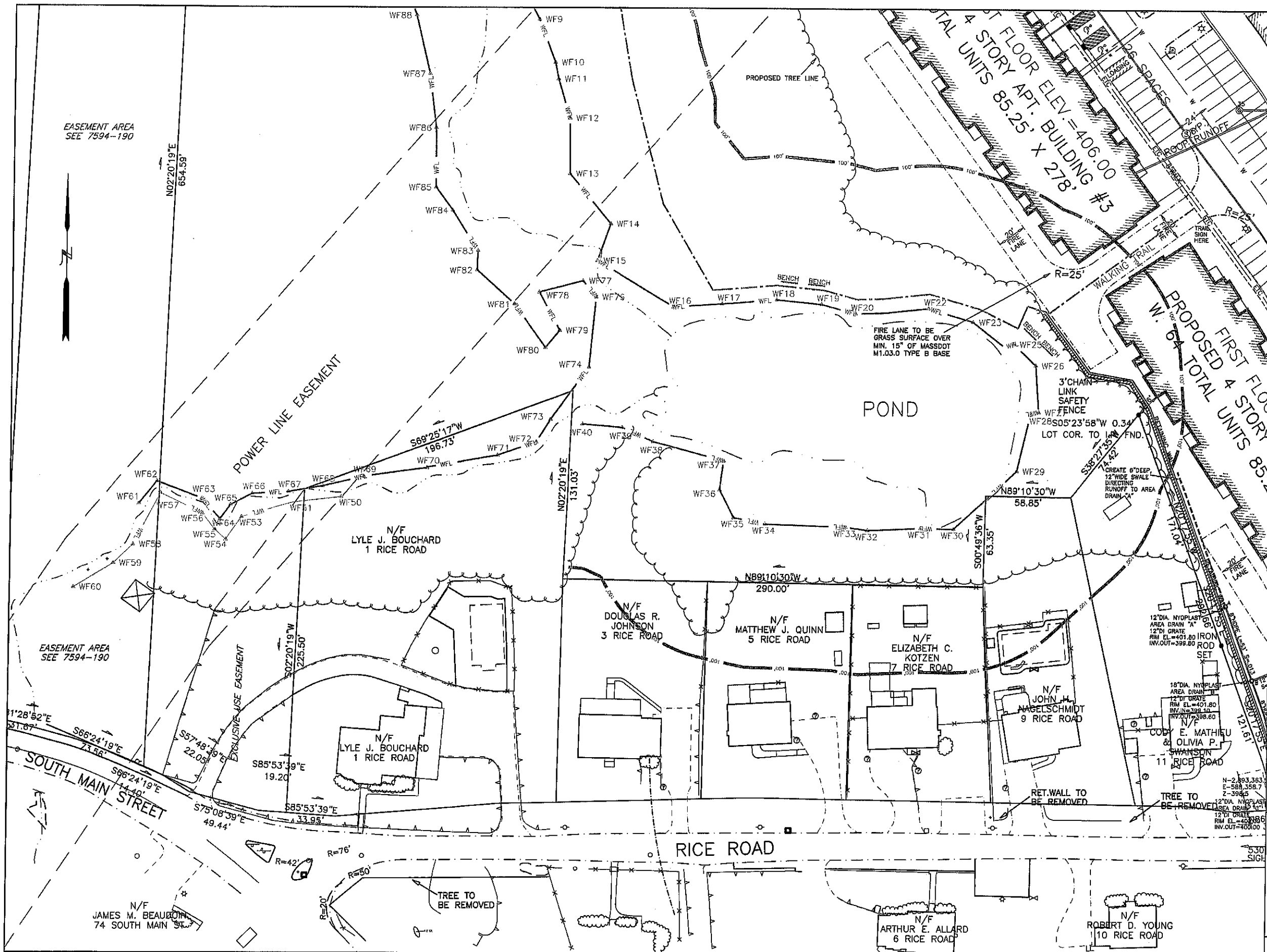


AZIMUTH LAND DESIGN, LLC
 Professional Engineers & Erosion Control Specialists
 118 Turnpike Road, Suite 200, Southborough, MA 01772
 Telephone (508) 485-0137 james@azimuthlanddesign.ca

CLT. NO.	501	JOB NO.	224-501
DATE:	OCTOBER 24, 2023	DWG NO.	RICEROADMILLBURYCURRENT
REVISIONS			
DATE:	DESCRIPTION		
12/29/23	TOWN REVIEW		
2/19/24	TOWN REVIEW		



**RICE POND VILLAGE
 SITE PLAN OF LAND**
 IN
 MILLBURY, MASSACHUSETTS
 PREPARED FOR
SJV INVESTMENTS, LLC
 118 TURNPIKE ROAD, SUITE 200
 SOUTHBOROUGH, MA 01772

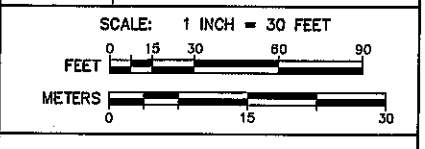


LEGEND

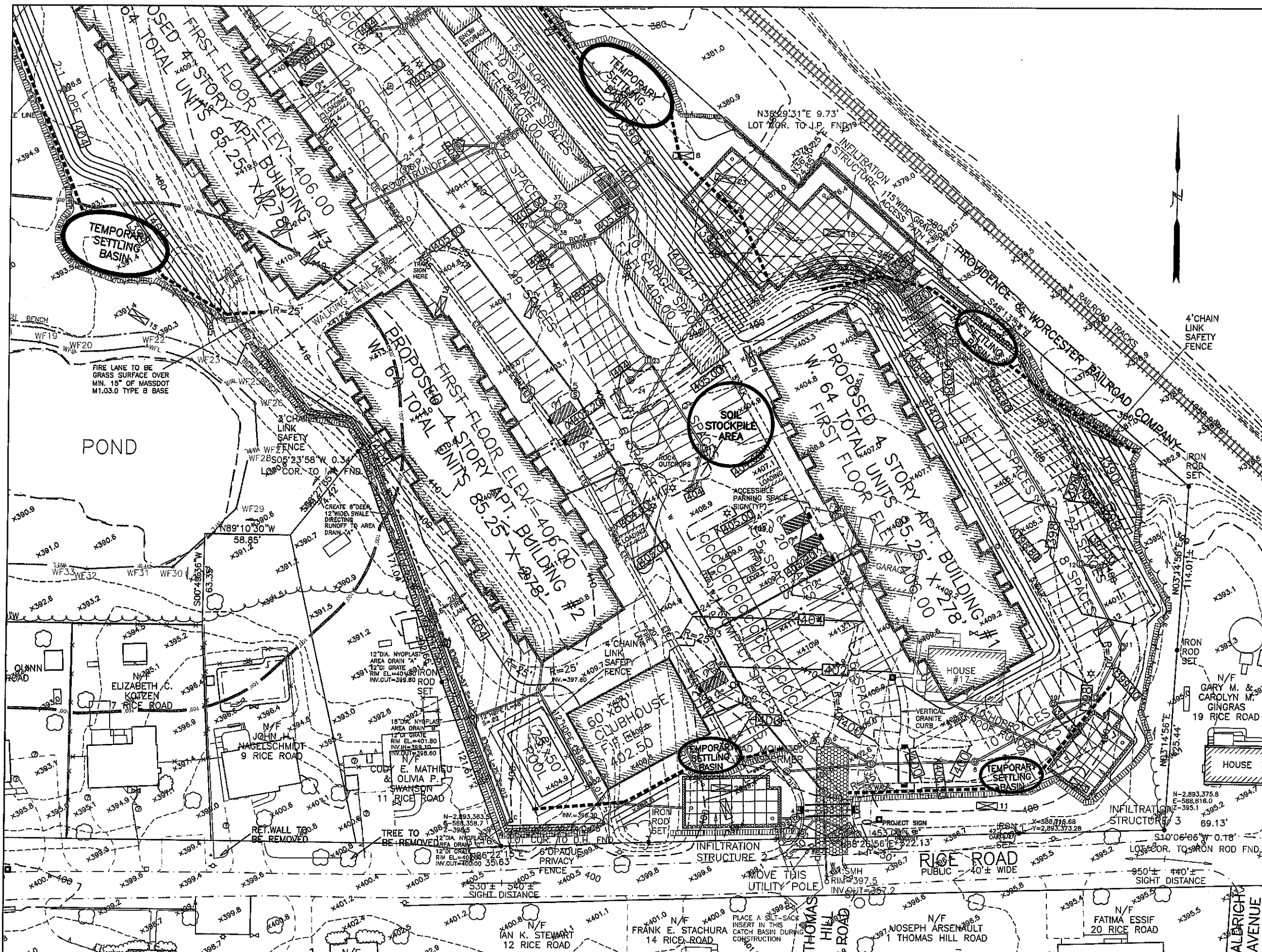
WFL	WETLAND EDGE
100'	100' WETLAND BUFFER ZONE LIMIT
⊕	PROPOSED DRAIN MANHOLE
⊕	PROPOSED CATCHBASIN
⊕	PROPOSED DOUBLE GRATED CATCHBASIN
⊕	PROPOSED SEWER MANHOLE
⊕	PROPOSED UNDERGROUND DRAIN OR SEWER PIPE
W	PROPOSED WATER LINE
⊕	PROPOSED HYDRANT
---	EXISTING EDGE OF PAVEMENT
---	PROPOSED SLOPED GRANITE CURBING
#6 Ⓢ	EXISTING UTILITY POLE
---	OVERHEAD WIRES
---	STONE WALL
⊕	TREE
---	PROPOSED TREELINE
⊕	DEEP OBSERVATION HOLE
---	PROPOSED WALKING TRAIL
ETC	PROPOSED ELECTRIC, TELEPHONE, CABLE CONDUIT
⊕	PROPOSED STREET LIGHT
⊕	PROPOSED INFILTRATION STRUCTURE TO RECEIVE CAPTURED RUNOFF
ST ⊕	PROPOSED STOP SIGN
⊕	PROPOSED HANDICAPPED ACCESSIBLE PARKING SPACE
---	PROPOSED GUARDRAIL

AZIMUTH LAND DESIGN, LLC
Professional Engineers & Erosion Control Specialists
118 Turnpike Road, Suite 200, Southborough, MA 01772
Telephone (508)-485-0137 james@azimuthlanddesign.com

CLT. NO.	501	JOB NO.	224-501
DATE:	OCTOBER 24, 2023	DWG NO.	RICEROADMILLBURYCURRENT
REVISIONS			
DATE:	DESCRIPTION		
12/29/23	TOWN REVIEW		
2/19/24	TOWN REVIEW		



**RICE POND VILLAGE
SITE PLAN OF LAND
IN
MILLBURY, MASSACHUSETTS**
PREPARED FOR
SJV INVESTMENTS, LLC
118 TURNPIKE ROAD, SUITE 200
SOUTHBOROUGH, MA 01772



LEGEND

- WFL 100' WETLAND EDGE
- 100' WETLAND BUFFER ZONE LIMIT
- 2' CONTOUR
- PROPOSED CONTOUR
- EXISTING SPOT GRADE
- PROPOSED SPOT GRADE
- PROPOSED DRAIN MANHOLE
- PROPOSED CATCHBASIN
- PROPOSED DOUBLE GRATED CATCHBASIN
- PROPOSED SEWER MANHOLE
- PROPOSED UNDERGROUND DRAIN OR SEWER PIPE
- PROPOSED WATER LINE
- PROPOSED HYDRANT
- EXISTING EDGE OF PAVEMENT
- PROPOSED SLOPED GRANITE CURBING
- EXISTING UTILITY POLE
- OVERHEAD WIRES
- STONE WALL
- TREE
- PROPOSED TREELINE
- DEEP OBSERVATION HOLE
- PROPOSED WALKING TRAIL
- ETC
- PROPOSED ELECTRIC, TELEPHONE, CABLE CONDUIT
- PROPOSED STREET LIGHT
- PROPOSED INFILTRATION STRUCTURE TO RECEIVE CAPTURED RUNOFF
- PROPOSED SEDIMENT CONTROL BARRIER
- PROPOSED STOP SIGN
- PROPOSED DIVERSION SWALE
- PROPOSED HANDICAPPED ACCESSIBLE PARKING SPACE
- PROPOSED GUARDRAIL
- PROPOSED STONE FILLED SITE ENTRANCE MAT

AZIMUTH LAND DESIGN, LLC
Professional Engineers & Erosion Control Specialists
118 Turnpike Road, Suite 200, Southborough, MA 01772
Telephone (508)-485-0137 james@azimuthtlanddesign.com

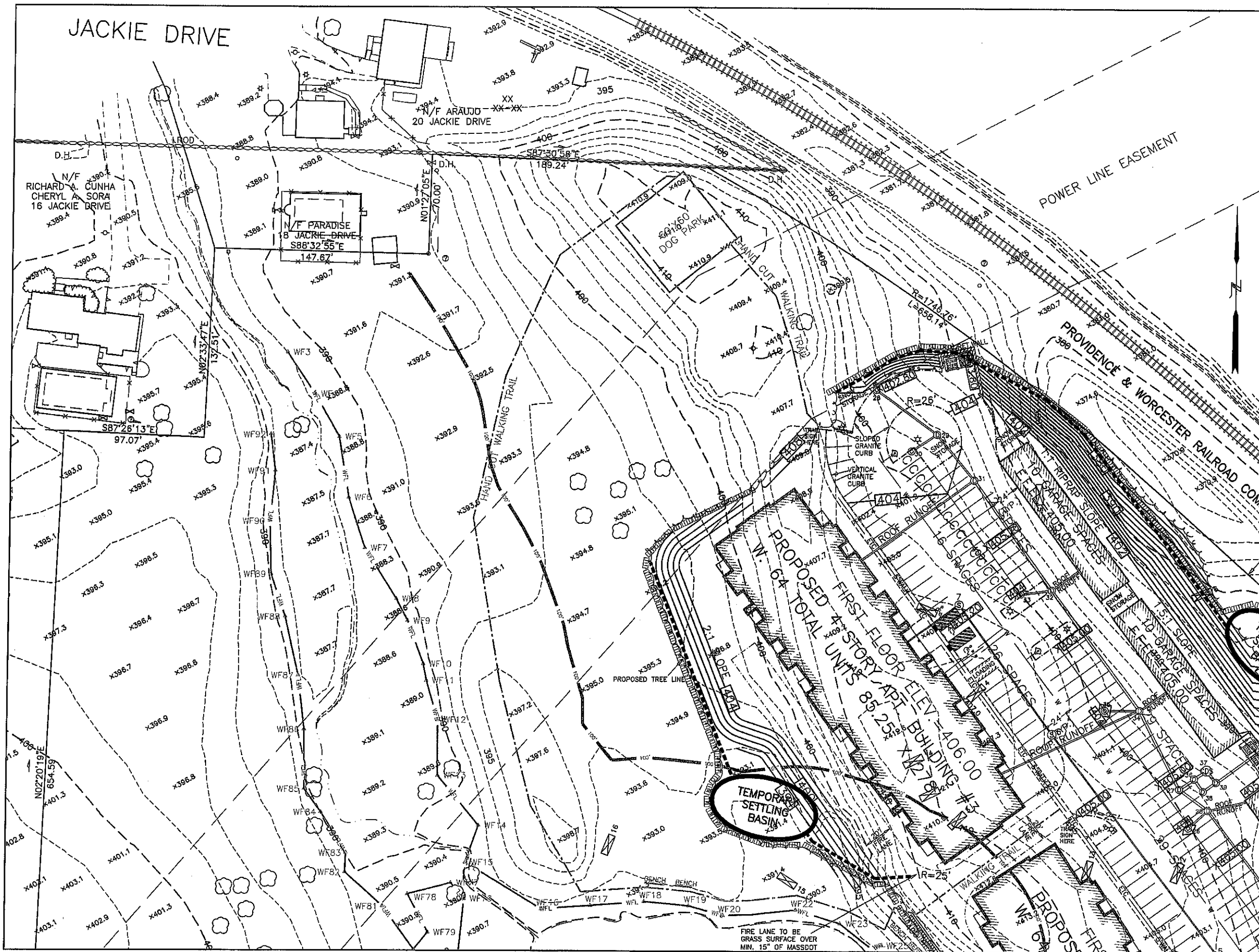
CLT. NO.	501	JOB NO.	224-501
DATE	OCTOBER 24, 2023	DWG NO.	RICEROADMILLBURYCURRENT
REVISIONS DESCRIPTION			
DATE	12/29/23	TOWN REVIEW	
	2/19/24	TOWN REVIEW	

SCALE: 1 INCH = 30 FEET

FEET: 0 15 30 60 90
METERS: 0 15 30

**RICE POND VILLAGE
SITE PLAN OF LAND**
IN
MILLBURY, MASSACHUSETTS
PREPARED FOR
SJV INVESTMENTS, LLC
118 TURNPIKE ROAD, SUITE 200
SOUTHBOROUGH, MA 01772

EROSION & SEDIMENTATION CONTROL PLAN ESC1

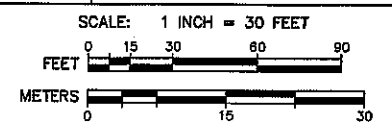


LEGEND

- WFL WETLAND EDGE
- 100' 100' WETLAND BUFFER ZONE LIMIT
- 480 2' CONTOUR
- 480 PROPOSED CONTOUR
- X405.0 EXISTING SPOT GRADE
- X398.500 PROPOSED SPOT GRADE
- ⊙ PROPOSED DRAIN MANHOLE
- ⊙ PROPOSED CATCHBASIN
- ⊙ PROPOSED DOUBLE GRATED CATCHBASIN
- ⊙ PROPOSED SEWER MANHOLE
- ⊙ PROPOSED UNDERGROUND DRAIN OR SEWER PIPE
- W PROPOSED WATER LINE
- ⊙ PROPOSED HYDRANT
- EXISTING EDGE OF PAVEMENT
- PROPOSED SLOPED GRANITE CURBING
- #5p EXISTING UTILITY POLE
- OHW OVERHEAD WIRES
- STONE WALL
- TREE
- PROPOSED TREELINE
- DEEP OBSERVATION HOLE
- PROPOSED WALKING TRAIL
- ETC
- PROPOSED ELECTRIC, TELEPHONE, CABLE CONDUIT
- PROPOSED STREET LIGHT
- PROPOSED INFILTRATION STRUCTURE TO RECEIVE CAPTURED RUNOFF
- PROPOSED SEDIMENT CONTROL BARRIER
- ST O PROPOSED STOP SIGN
- PROPOSED DIVERSION SHALE
- PROPOSED HANDICAPPED ACCESSIBLE PARKING SPACE
- PROPOSED GUARDRAIL
- PROPOSED STONE FILLED SITE ENTRANCE MAT

AZIMUTH LAND DESIGN, LLC
 Professional Engineers & Erosion Control Specialists
 118 Turnpike Road, Suite 200, Southborough, MA 01772
 Telephone 508-485-0137 jamest@azimutlanddesign.com

CLT. NO.	501	JOB NO.	224-501
DATE:	OCTOBER 24, 2023	DWG NO.	RICEROADMILLBURYCURRENT
REVISIONS			
DATE:	DESCRIPTION		
12/29/23	TOWN REVIEW		
2/19/24	TOWN REVIEW		



**RICE POND VILLAGE
 SITE PLAN OF LAND
 IN
 MILLBURY, MASSACHUSETTS**
 PREPARED FOR
SJV INVESTMENTS, LLC
 118 TURNPIKE ROAD, SUITE 200
 SOUTHBOROUGH, MA 01772