



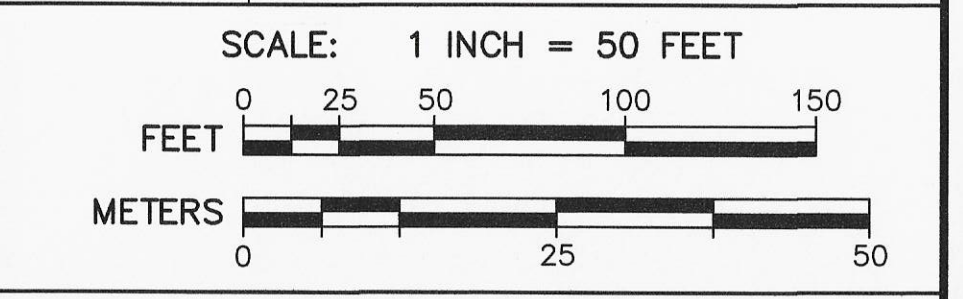
**LEGEND**

	WFL	WETLAND EDGE
	100'	100' WETLAND BUFFER ZONE LIMIT
	2'	2' CONTOUR
	x403.0	EXISTING SPOT GRADE
	#6	EXISTING EDGE OF PAVEMENT
	OHW	EXISTING UTILITY POLE
		OVERHEAD WIRES
		STONE WALL
		TREE
		TREELINE
	1	SUBCATCHMENT
		TIME OF CONCENTRATION FLOW PATH

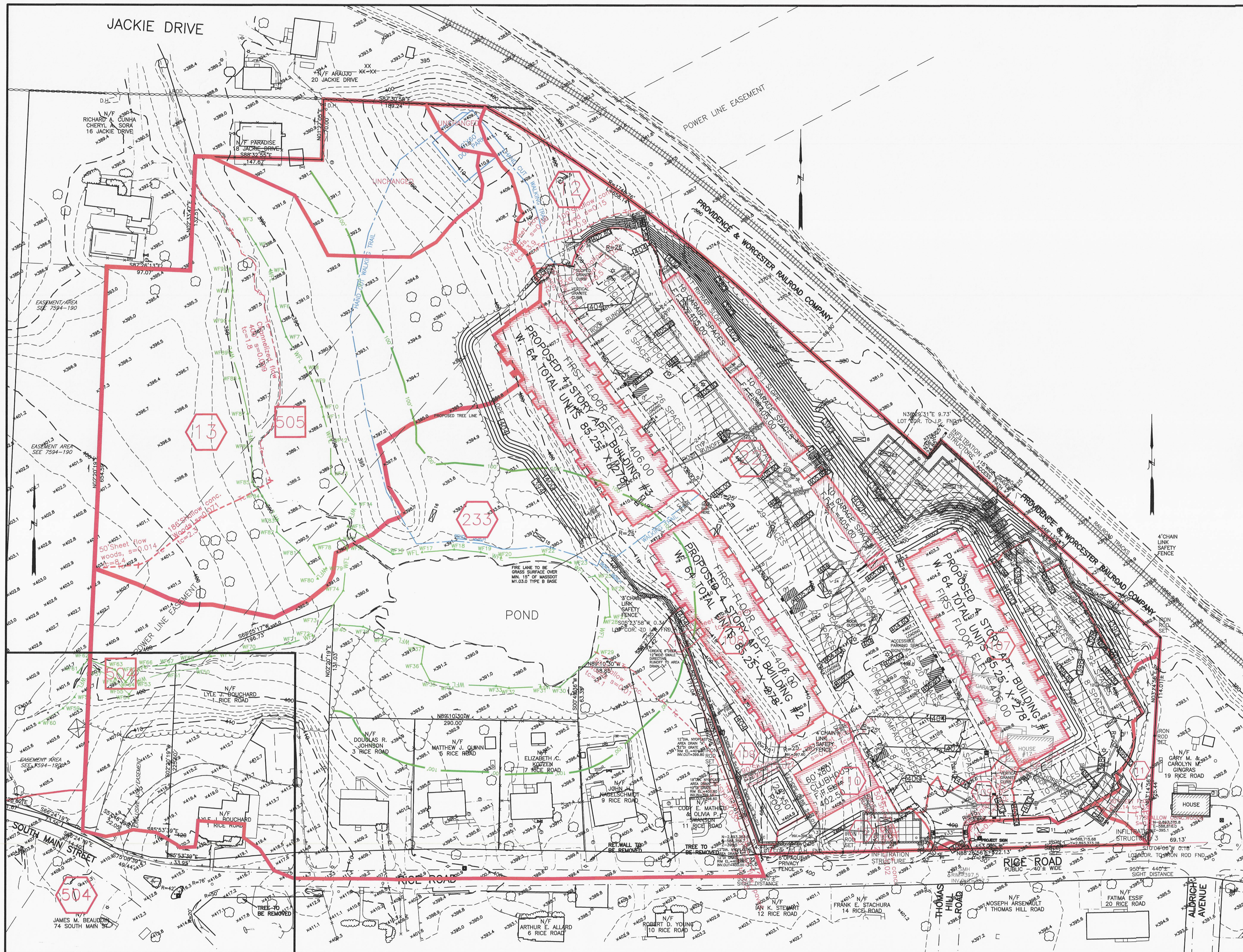


**AZIMUTH LAND DESIGN, LLC**  
 Professional Engineers & Erosion Control Specialists  
 118 Turnpike Road, Suite 200, Southborough, MA 01772  
 Telephone: (508) 485-0137 james@azimuthlanddesign.co

CLT. NO.	501	JOB NO.	224-501
DATE:	OCTOBER 24, 2023	DWG NO.	RICEROADMILLBURYCURRENT
REVISIONS			
DATE:		DESCRIPTION	
2/19/24		TOWN REVIEW	

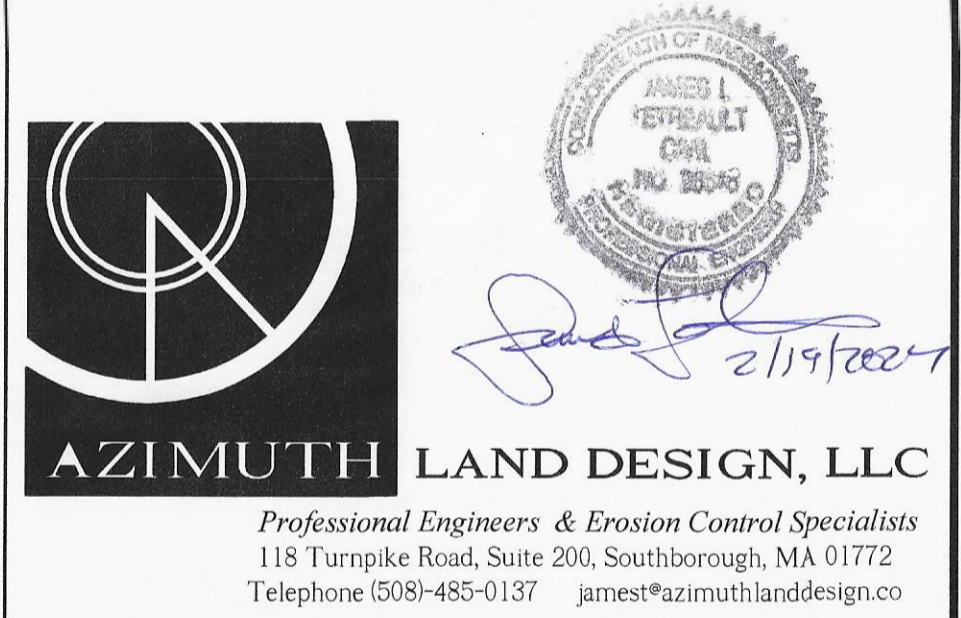


**PREDEVELOPMENT DRAINAGE AREA PLAN AT 17 RICE ROAD**  
 IN  
**MILLBURY, MASSACHUSETTS**  
 PREPARED FOR  
**SVJ INVESTMENTS, LLC**  
 118 TURNPIKE ROAD, SUITE 200  
 SOUTHBOROUGH, MA 01772



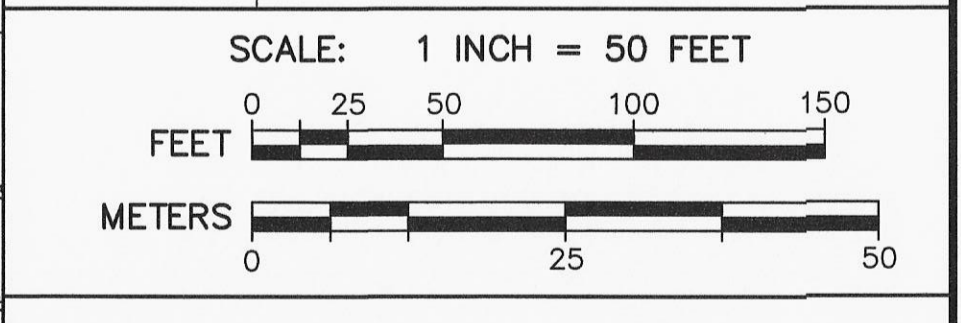
**LEGEND**

- WFL WETLAND EDGE
- 100' WETLAND BUFFER ZONE LIMIT
- 2' CONTOUR
- 10' CONTOUR
- PROPOSED CONTOUR
- EXISTING SPOT GRADE
- PROPOSED SPOT GRADE
- PROPOSED DRAIN MANHOLE
- PROPOSED CATCHBASIN
- PROPOSED DOUBLE GRATED CATCHBASIN
- PROPOSED SEWER MANHOLE
- PROPOSED UNDERGROUND DRAIN OR SEWER PIPE
- PROPOSED WATER LINE
- PROPOSED HYDRANT
- EXISTING EDGE OF PAVEMENT
- PROPOSED SLOPED GRANITE CURBING
- EXISTING UTILITY POLE
- OVERHEAD WIRES
- STONE WALL
- TREE
- PROPOSED TREELINE
- DEEP OBSERVATION HOLE
- PROPOSED WALKING TRAIL
- ETC
- PROPOSED ELECTRIC, TELEPHONE, CABLE CONDUIT
- PROPOSED STREET LIGHT
- SOIL SERIES BOUNDARY FROM THE NRCS WEB SOIL SURVEY
- 11 SUBCATCHMENT
- TIME OF CONCENTRATION FLOW PATH



**AZIMUTH LAND DESIGN, LLC**  
 Professional Engineers & Erosion Control Specialists  
 118 Turnpike Road, Suite 200, Southborough, MA 01772  
 Telephone (508)-485-0137 james@azimuthlanddesign.co

CLT. NO.	501	JOB NO.	224-501
DATE:	OCTOBER 24, 2023	DWG NO.	RICEROADMILLBURYCURRENT
REVISIONS			
DATE:		DESCRIPTION	
2-19-24		TOWN REVIEW	



**POSTDEVELOPMENT DRAINAGE AREA PLAN AT 17 RICE ROAD**  
 IN  
**MILLBURY, MASSACHUSETTS**  
 PREPARED FOR  
**SVJ INVESTMENTS, LLC**  
 118 TURNPIKE ROAD, SUITE 200  
 SOUTHBOROUGH, MA 01772