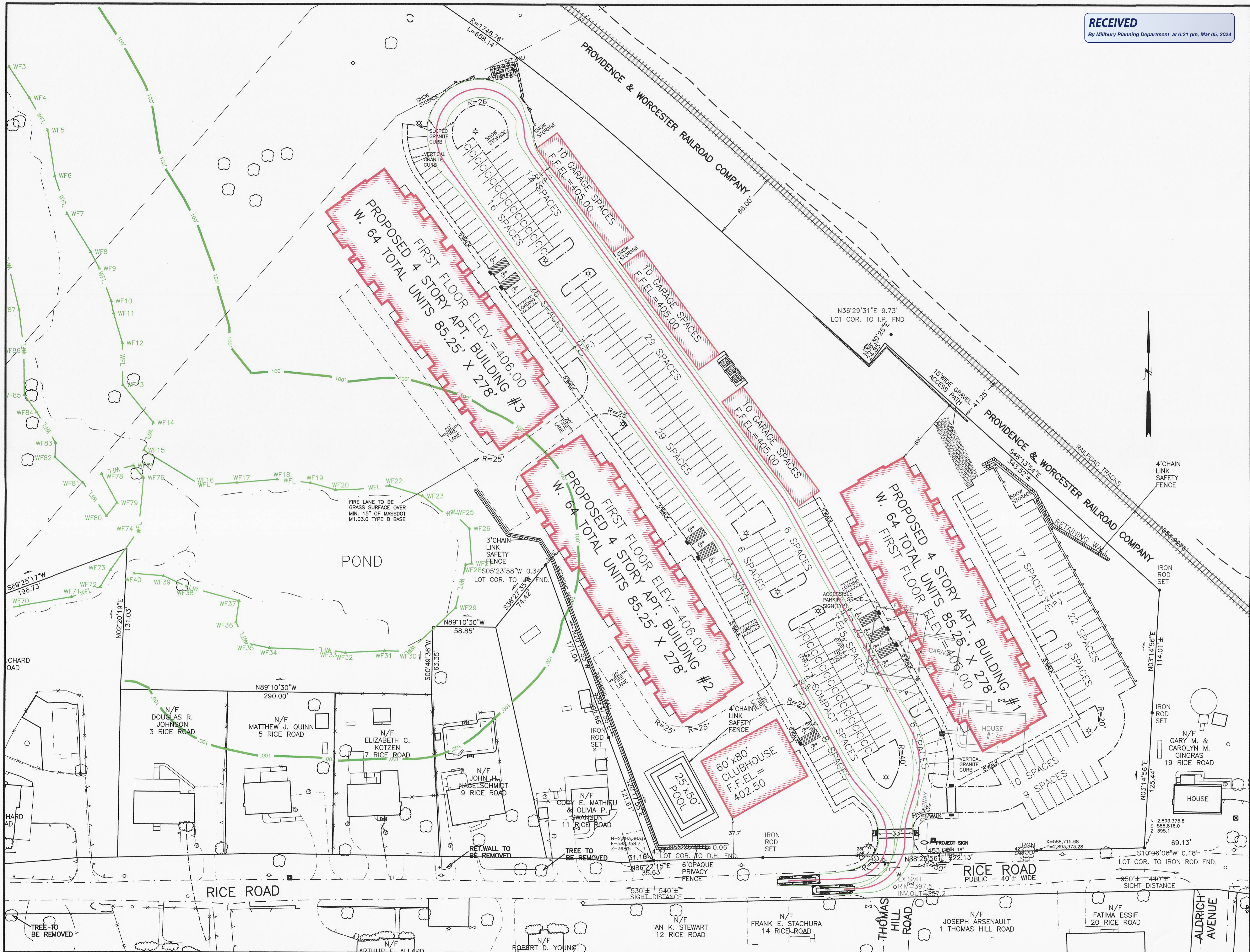


**RECEIVED**  
By Millbury Planning Department at 6:21 pm, Mar 05, 2024

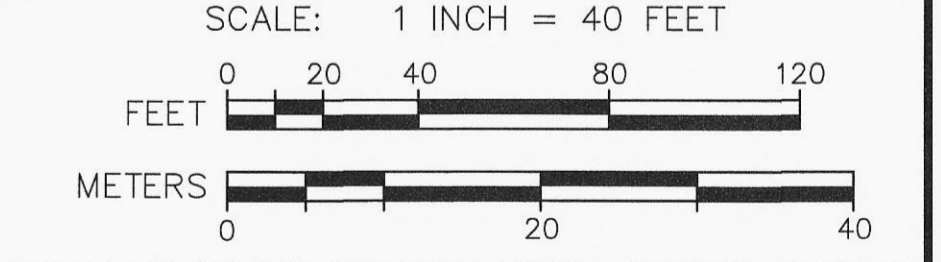


NOTE:  
THE VEHICLE USED IN THIS SIMULATION WAS A  
SMEAL AERIAL RM 100 FT TRUCK WITH A  
LENGTH OF 39.93 FEET AND A WHEEL BASE OF  
18.01 WITH A FRONT OVERHANG OF 10.07 FEET.

**AZIMUTH LAND DESIGN, LLC**  
Professional Engineers & Erosion Control Specialists  
118 Turnpike Road, Suite 200, Southborough, MA 01772  
Telephone (508)-485-0137 james@azimuthlanddesign.co

2/19/2024

CLT. NO.	501	JOB NO.	224-501
DATE:	FEBRUARY 19, 2024	DWG NO.	RICEROADMILLBURYCURRENT
REVISIONS			
DATE:		DESCRIPTION	



RICE POND VILLAGE  
PLAN TO SHOW FIRE TOWER  
TRUCK PASSAGE THROUGH  
THE SITE  
IN  
MILLBURY, MASSACHUSETTS  
PREPARED FOR  
SJV INVESTMENTS, LLC  
118 TURNPIKE ROAD, SUITE 200  
SOUTHBOROUGH, MA 01772