

## Conor McCormack

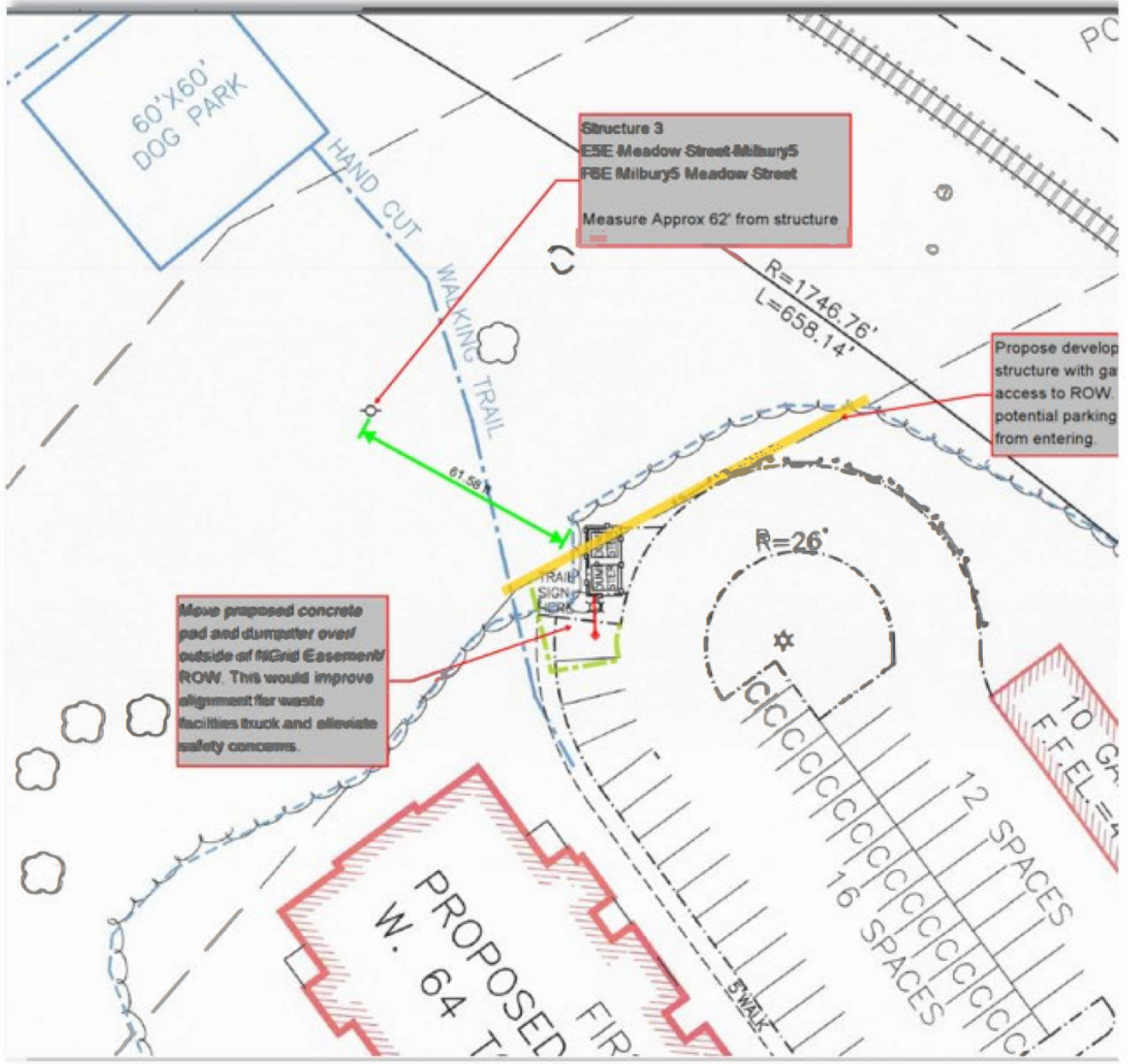
**From:** Ryan Stoelk [REDACTED]  
**Sent:** Wednesday, January 31, 2024 12:22 PM  
**To:** Conor McCormack  
**Subject:** Nationalgrid comments-Proposed development-17 Rice Road, Millbury, MA

**CAUTION:** This email originated from outside of The Town of Millbury email system. Do not click links or open attachments unless you recognize the sender and know the content is safe.

Dear Mr. McCormack,

My name is Ryan Stoelk and I am a Real Estate Rep for Nationalgrid. That said, we have a transmission line easement/right-of-way that crosses the property with the proposed condo development at 17 Rice Road. Regarding the Applicant's proposed concrete dumpster pad shown encroaching within the edge of our easement, I have contacted the Applicant ( James Tetreault w/ Azimuth Land Design) and he has agreed to shift the location over and off the easement. Also the installation of a guardrail/fence with an access gate to allow for Nationalgrid personal to access the ROW for maintenance and to conduct any emergency repairs. Please find my comments discussed with the applicant shown on the screen shot of their latest plan below. I wanted to make sure you are aware of these comments given the public hearing on this is scheduled for tonight **January 31<sup>st</sup> at 7pm.**

Please feel free to contact me with any questions you may have.






**AZIMUTH LAND DESIGN, LLC**  
*Professional Engineers & Erosion Control Specialists*  
 118 Turnpike Road, Suite 200, Southborough, MA 01772  
 Telephone (508)-485-0137 james@azimuthlanddesign.co

*James I. Reynolds*  
12/29/23

CLT. NO. <b>501</b>	JOB NO. <b>224-501</b>
DATE: <b>OCTOBER 24, 2023</b>	DWG. NO. <b>RICEROADMILLBURYCURRENT</b>
REVISIONS	
DATE:	DESCRIPTION
12/29/23	TOWN REVIEW

SCALE: 1 INCH = 30 FEET

0 15 30 60 90  
FEET

0 15 30  
METERS

**RICE POND VILLAGE  
 SITE PLAN OF LAND**  
 IN  
**MILLBURY, MASSACHUSETTS**  
 PREPARED FOR  
**SJV INVESTMENTS, LLC**  
 118 TURNPIKE ROAD, SUITE 200  
 SOUTHBOROUGH, MA 01772

**SITE LAYOUT PLAN S2**

Best regards,

**Ryan Stoelk**  
 Senior Real Estate Representative  
 Right-of-Way & Survey Engineering  
 Operations Support | New England  
[nationalgrid](http://nationalgrid.com)  
 781-663-3146 | Direct  
 617-962-3557 | Mobile  
[Ryan.Stoelk@nationalgrid.com](mailto:Ryan.Stoelk@nationalgrid.com)  
 170 Data Drive, Waltham, Ma 02451  



[nationalgridus.com](http://nationalgridus.com)

This e-mail, and any attachments are strictly confidential and intended for the addressee(s) only. The content may also contain legal, professional or other privileged information. If you are not the intended recipient, please notify the sender immediately and then delete the e-mail and any attachments. You should not disclose, copy or take any action in reliance on this transmission.

You may report the matter by contacting us via our [UK Contacts Page](#) or our [US Contacts Page](#) (accessed by clicking on the appropriate link)

Please ensure you have adequate virus protection before you open or detach any documents from this transmission. National Grid plc and its affiliates do not accept any liability for viruses. An e-mail reply to this address may be subject to monitoring for operational reasons or lawful business practices.

For the registered information on the UK operating companies within the National Grid group please use the attached link: <https://www.nationalgrid.com/group/about-us/corporate-registrations>