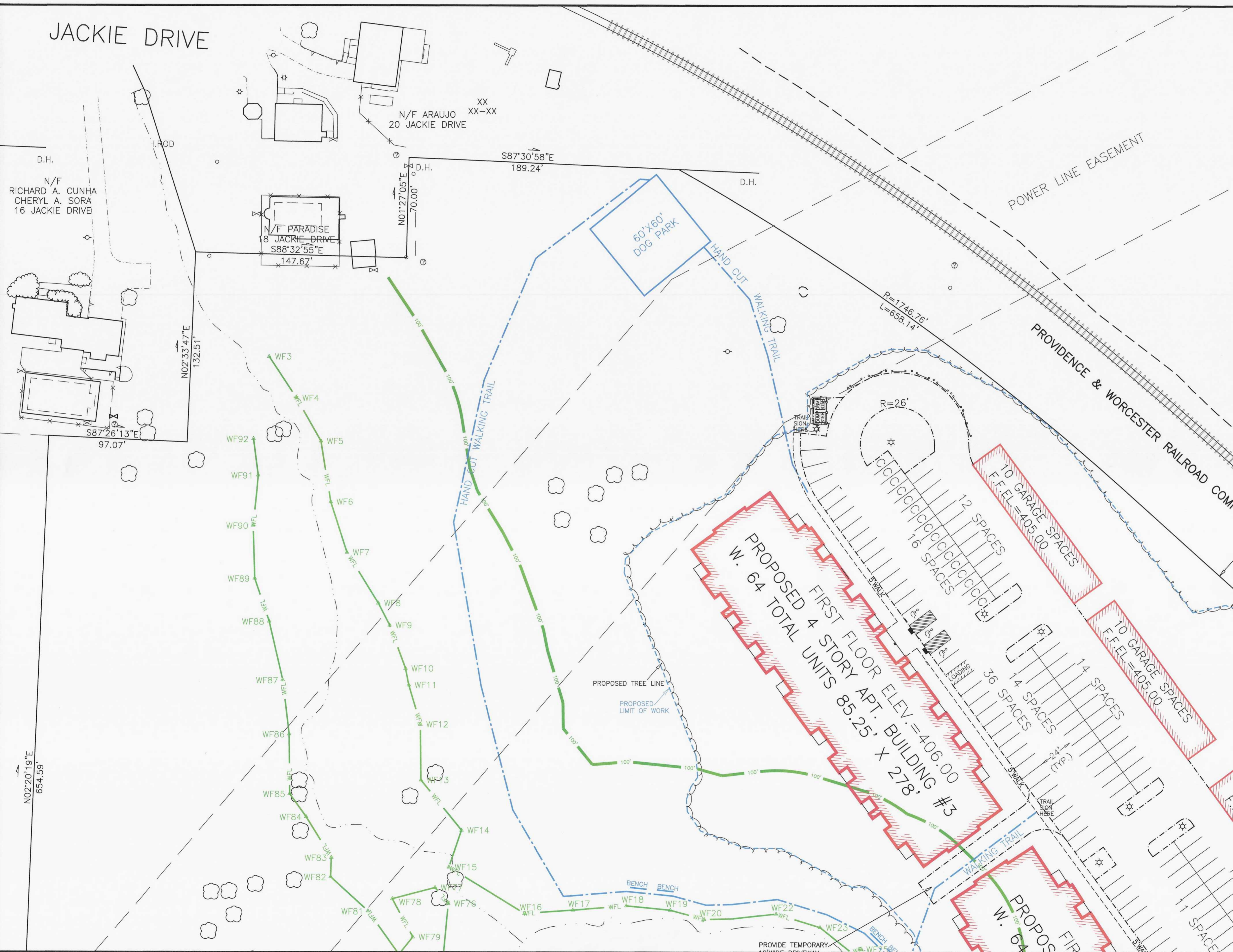


JACKIE DRIVE

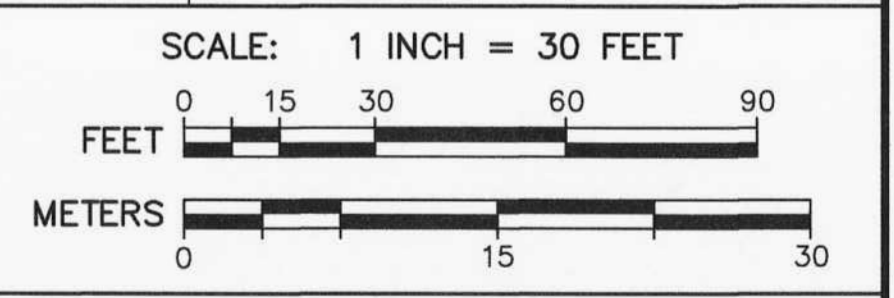


LEGEND

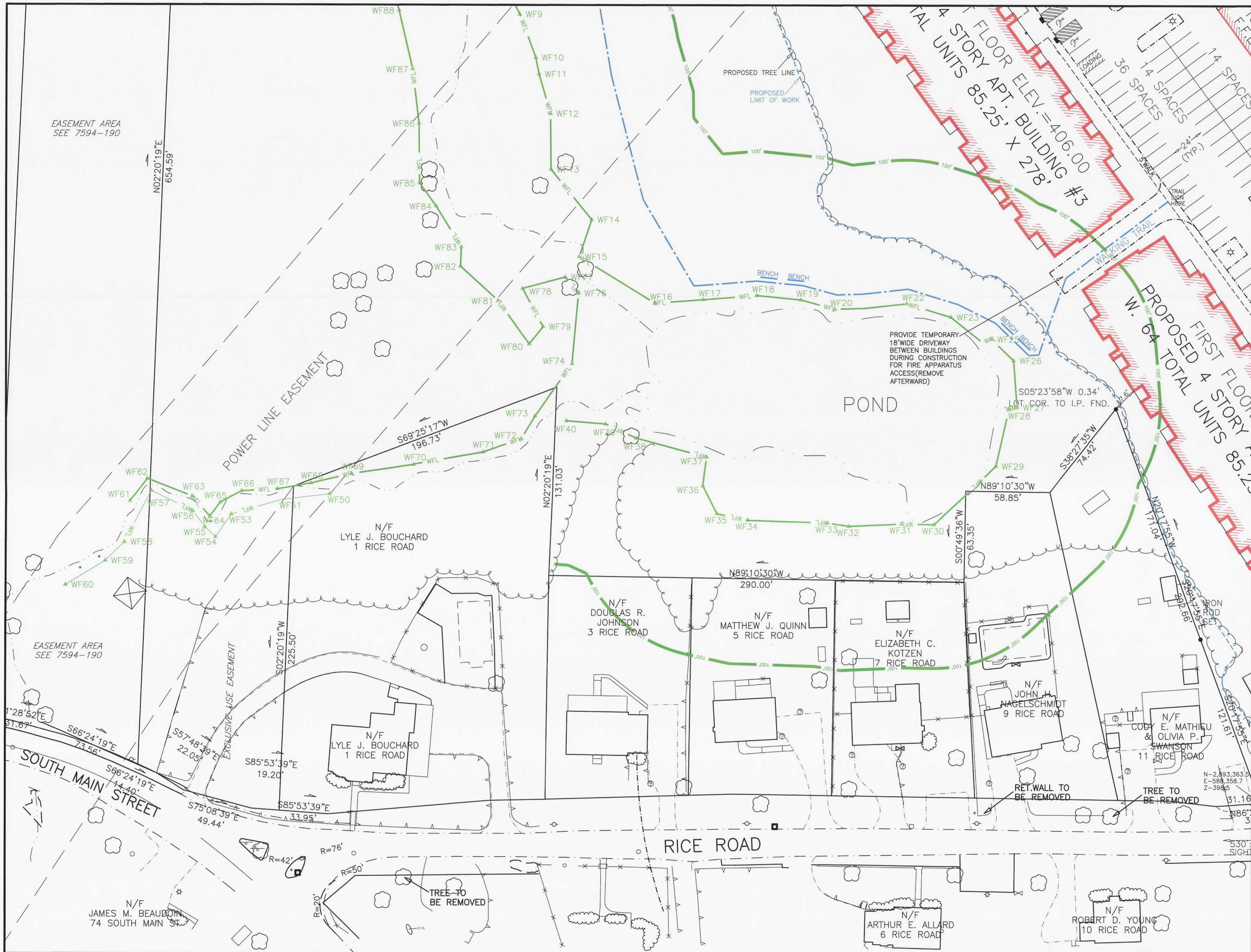
- WFL WETLAND EDGE
- 100' 100' WETLAND BUFFER ZONE LIMIT
- - - - - EXISTING EDGE OF PAVEMENT
- - - - - PROPOSED SLOPED GRANITE CURBING
- #6_g OHW EXISTING UTILITY POLE OVERHEAD WIRES
- STONE WALL
- ☁ TREE
- ~ ~ ~ PROPOSED TREELINE
- ⊠ 23 DEEP OBSERVATION HOLE
- PROPOSED WALKING TRAIL
- ETC PROPOSED ELECTRIC, TELEPHONE, CABLE CONDUIT
- ☀ PROPOSED STREET LIGHT
- ☐ INFILTRATION AREA
- ST ○ PROPOSED STOP SIGN
- ♿ PROPOSED HANDICAPPED ACCESSIBLE PARKING SPACE
- PROPOSED GUARDRAIL

AZIMUTH LAND DESIGN, LLC
 Professional Engineers & Erosion Control Specialists
 118 Turnpike Road, Suite 200, Southborough, MA 01772
 Telephone (508)-485-0137 james@azimuthlanddesign.co

CLT. NO.	501	JOB NO.	224-501
DATE:	OCTOBER 24, 2023	DWG NO.	RICEROADMILLBURYCURRENT
REVISIONS			
DATE:		DESCRIPTION	
12/29/23		TOWN REVIEW	



RICE POND VILLAGE
 SITE PLAN OF LAND
 IN
 MILLBURY, MASSACHUSETTS
 PREPARED FOR
SVJ INVESTMENTS, LLC
 118 TURNPIKE ROAD, SUITE 200
 SOUTHBOROUGH, MA 01772

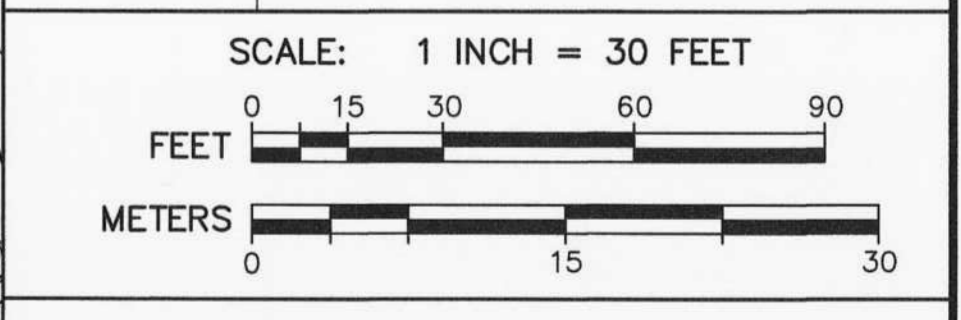


LEGEND

	WFL	WETLAND EDGE
	100'	100' WETLAND BUFFER ZONE LIMIT
		EXISTING EDGE OF PAVEMENT
		PROPOSED SLOPED GRANITE CURBING
	#6 OHW	EXISTING UTILITY POLE OVERHEAD WIRES
		STONE WALL
		TREE
	23	PROPOSED TREELINE
	23	DEEP OBSERVATION HOLE
		PROPOSED WALKING TRAIL
	ETC	PROPOSED ELECTRIC, TELEPHONE, CABLE CONDUIT
		PROPOSED STREET LIGHT
		PROPOSED INFILTRATION STRUCTURE TO RECEIVE CAPTURED RUNOFF
	ST	PROPOSED STOP SIGN
		PROPOSED HANDICAPPED ACCESSIBLE PARKING SPACE
		PROPOSED GUARDRAIL

AZIMUTH LAND DESIGN, LLC
Professional Engineers & Erosion Control Specialists
118 Turnpike Road, Suite 200, Southborough, MA 01772
Telephone (508)-485-0137 james@azimuthlanddesign.co

CLT. NO.	501	JOB NO.	224-501
DATE:	OCTOBER 24, 2023	DWG NO.	RICEROADMILLBURYCURRENT
REVISIONS			
DATE:	12/29/23	DESCRIPTION	TOWN REVIEW



**RICE POND VILLAGE
SITE PLAN OF LAND**
IN
MILLBURY, MASSACHUSETTS
PREPARED FOR
SVJ INVESTMENTS, LLC
118 TURNPIKE ROAD, SUITE 200
SOUTHBOROUGH, MA 01772



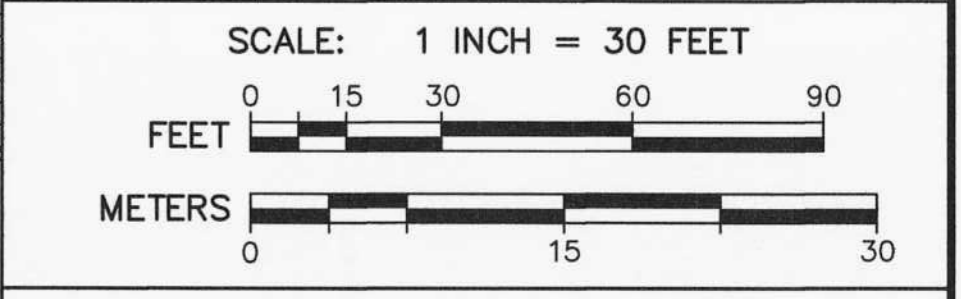
LEGEND

- WFL WETLAND EDGE
- 100' 100' WETLAND BUFFER ZONE LIMIT
- 2' CONTOUR
- PROPOSED CONTOUR
- EXISTING SPOT GRADE
- PROPOSED SPOT GRADE
- PROPOSED DRAIN MANHOLE
- PROPOSED CATCHBASIN
- PROPOSED DOUBLE GRATED CATCHBASIN
- PROPOSED SEWER MANHOLE
- PROPOSED UNDERGROUND DRAIN OR SEWER PIPE
- PROPOSED WATER LINE
- PROPOSED HYDRANT
- EXISTING EDGE OF PAVEMENT
- PROPOSED SLOPED GRANITE CURBING
- EXISTING UTILITY POLE
- OVERHEAD WIRES
- STONE WALL
- TREE
- PROPOSED TREELINE
- DEEP OBSERVATION HOLE
- PROPOSED WALKING TRAIL
- ETC
- PROPOSED ELECTRIC, TELEPHONE, CABLE CONDUIT
- PROPOSED STREET LIGHT
- PROPOSED INFILTRATION STRUCTURE TO RECEIVE CAPTURED RUNOFF
- PROPOSED STOP SIGN
- PROPOSED HANDICAPPED ACCESSIBLE PARKING SPACE
- PROPOSED GUARDRAIL

12/29/2023

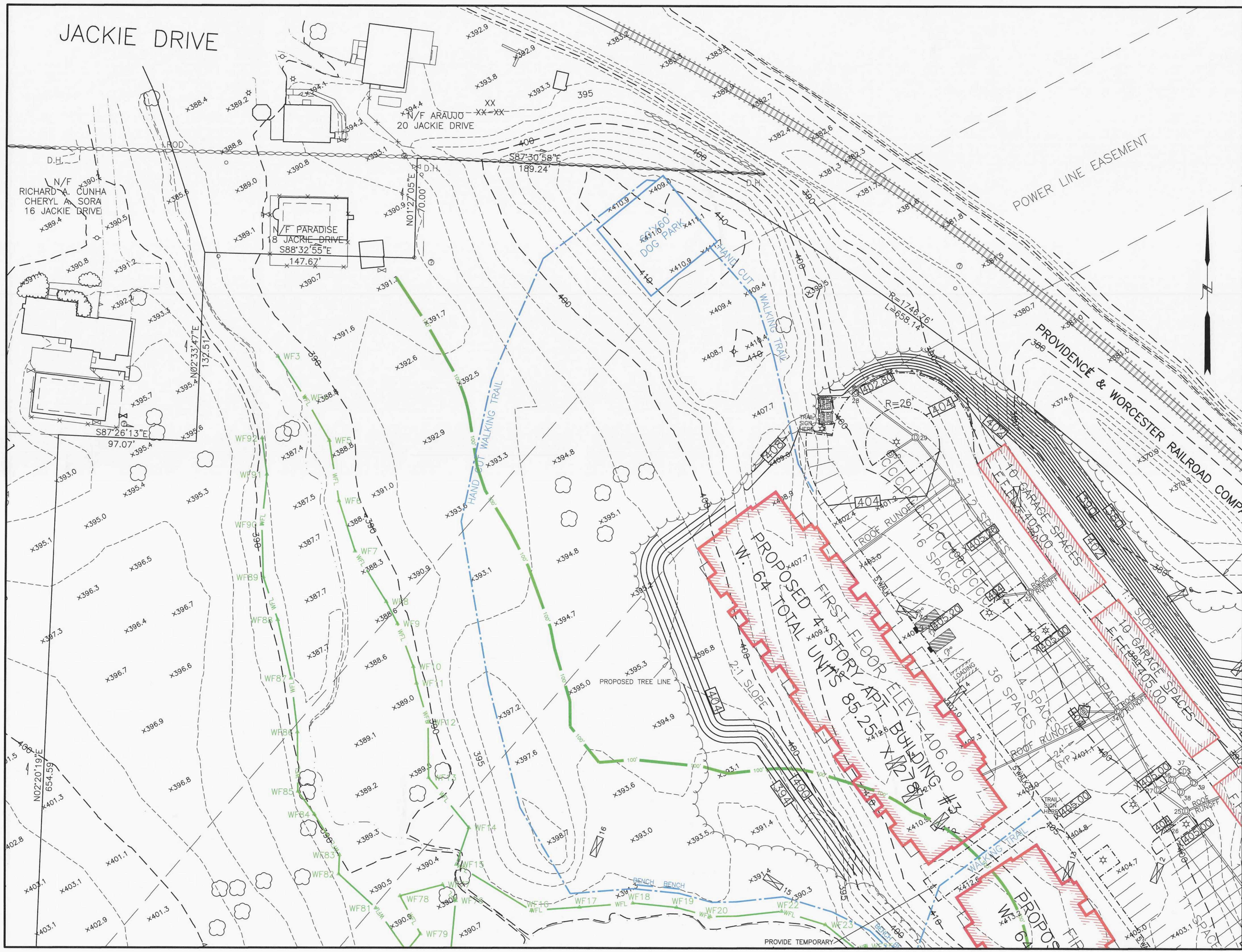
AZIMUTH LAND DESIGN, LLC
 Professional Engineers & Erastion Control Specialists
 118 Turnpike Road, Suite 200, Southborough, MA 01772
 Telephone (508)-485-0137 james@azimuthlanddesign.co

CLT. NO. 501	JOB NO. 224-501
DATE: OCTOBER 24, 2023	DWG NO. RICEROADMILLBURYCURRENT
REVISIONS	
DATE: 12/29/23	DESCRIPTION: TOWN REVIEW



**RICE POND VILLAGE
SITE PLAN OF LAND**
 IN
MILLBURY, MASSACHUSETTS
 PREPARED FOR
SJV INVESTMENTS, LLC
 118 TURNPIKE ROAD, SUITE 200
 SOUTHBOROUGH, MA 01772

GRADING PLAN G1

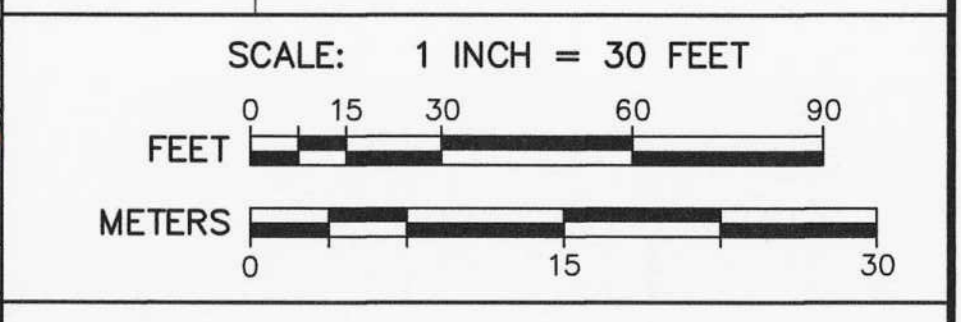


LEGEND

- WFL WETLAND EDGE
- 100' 100' WETLAND BUFFER ZONE LIMIT
- - - 2' CONTOUR
- - - 10' CONTOUR
- - - PROPOSED CONTOUR
- x EXISTING SPOT GRADE
- x PROPOSED SPOT GRADE
- ⊙ PROPOSED DRAIN MANHOLE
- ⊕ PROPOSED CATCHBASIN
- ⊕ PROPOSED DOUBLE GRATED CATCHBASIN
- ⊕ PROPOSED SEWER MANHOLE
- PROPOSED UNDERGROUND DRAIN OR SEWER PIPE
- PROPOSED WATER LINE
- PROPOSED HYDRANT
- - - EXISTING EDGE OF PAVEMENT
- - - PROPOSED SLOPED GRANITE CURBING
- #6 EXISTING UTILITY POLE
- OHW OVERHEAD WIRES
- STONE WALL
- ⊙ TREE
- PROPOSED TREELINE
- ⊕ DEEP OBSERVATION HOLE
- - - PROPOSED WALKING TRAIL
- - - ETC PROPOSED ELECTRIC, TELEPHONE, CABLE CONDUIT
- ⊙ PROPOSED STREET LIGHT
- ⊕ PROPOSED INFILTRATION STRUCTURE TO RECEIVE CAPTURED RUNOFF
- ST PROPOSED STOP SIGN
- ♿ PROPOSED HANDICAPPED ACCESSIBLE PARKING SPACE
- PROPOSED GUARDRAIL

AZIMUTH LAND DESIGN, LLC
 Professional Engineers & Erosion Control Specialists
 118 Turnpike Road, Suite 200, Southborough, MA 01772
 Telephone (508)-485-0137 james@azimuthlanddesign.co

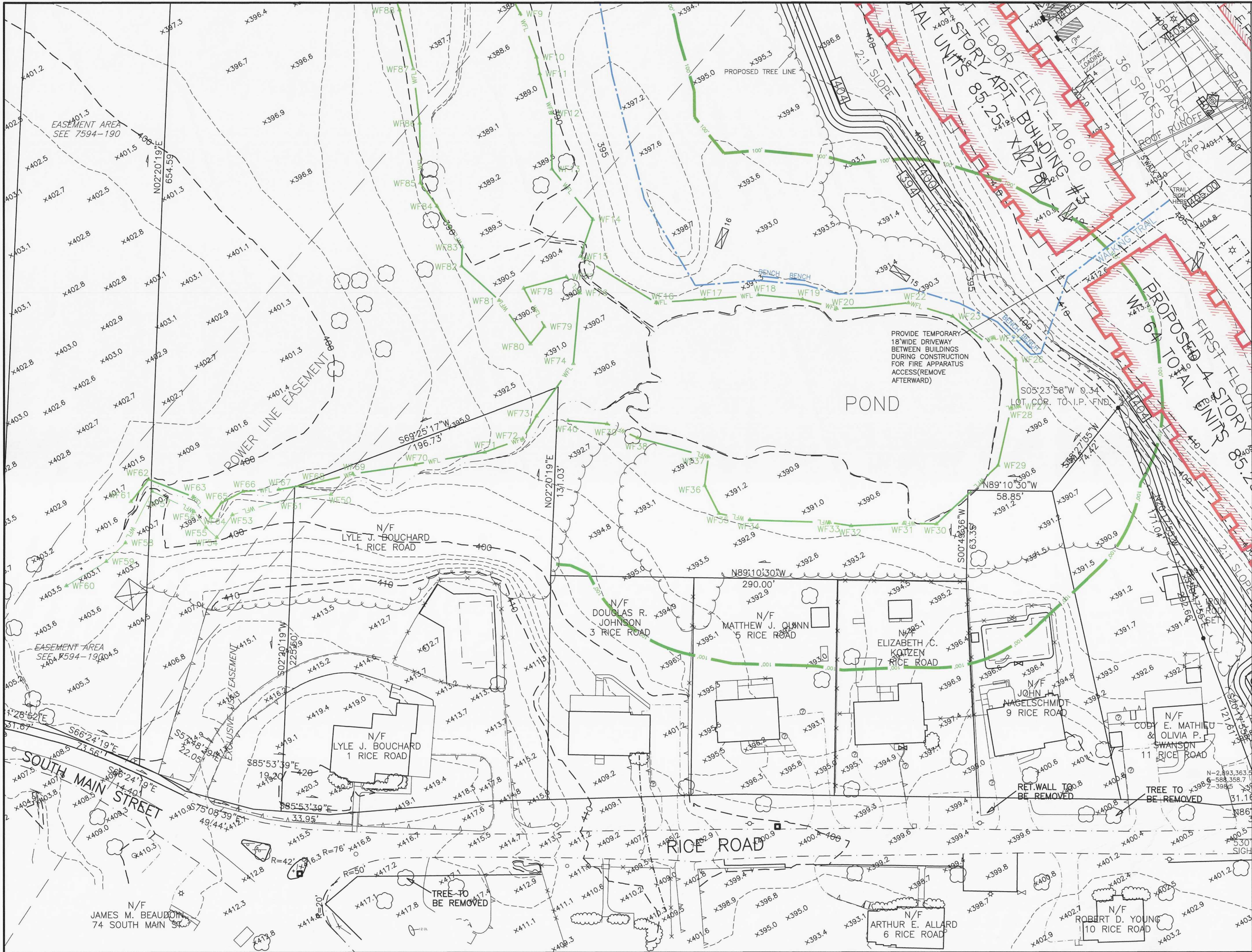
CLT. NO.	501	JOB NO.	224-501
DATE:	OCTOBER 24, 2023	DWG. NO.	RICEROADMILLBURYCURRENT
REVISIONS			
DATE:		DESCRIPTION	
12/29/23		TOWN REVIEW	



**RICE POND VILLAGE
 SITE PLAN OF LAND
 IN
 MILLBURY, MASSACHUSETTS**

PREPARED FOR
SVJ INVESTMENTS, LLC
 118 TURNPIKE ROAD, SUITE 200
 SOUTHBOROUGH, MA 01772

GRADING PLAN G2



LEGEND

	WFL	WETLAND EDGE
	100'	100' WETLAND BUFFER ZONE LIMIT
	2'	2' CONTOUR
	10'	10' CONTOUR
	400	PROPOSED CONTOUR
	x403.0	EXISTING SPOT GRADE
	x403.50	PROPOSED SPOT GRADE
		PROPOSED DRAIN MANHOLE
		PROPOSED CATCHBASIN
		PROPOSED DOUBLE GRATED CATCHBASIN
		PROPOSED SEWER MANHOLE
		PROPOSED UNDERGROUND DRAIN OR SEWER PIPE
		PROPOSED WATER LINE
		PROPOSED HYDRANT
		EXISTING EDGE OF PAVEMENT
		PROPOSED SLOPED GRANITE CURBING
	#6	EXISTING UTILITY POLE
	OHW	OVERHEAD WIRES
		STONE WALL
		TREE
	23	PROPOSED TREELINE
		DEEP OBSERVATION HOLE
	ETC	PROPOSED WALKING TRAIL
		PROPOSED ELECTRIC, TELEPHONE, CABLE CONDUIT
		PROPOSED STREET LIGHT
		PROPOSED INFILTRATION STRUCTURE TO RECEIVE CAPTURED RUNOFF
	ST	PROPOSED STOP SIGN
		PROPOSED HANDICAPPED ACCESSIBLE PARKING SPACE
		PROPOSED GUARDRAIL

AZIMUTH LAND DESIGN, LLC
Professional Engineers & Erosion Control Specialists
118 Turnpike Road, Suite 200, Southborough, MA 01772
Telephone (508) 485-0137 james@azimuthlanddesign.co

James L. Ferrelault
12/29/2023

CLT. NO. 501 **JOB NO. 224-501**
DATE: OCTOBER 24, 2023 **DWG NO. RICEROADMILLBURYCURRENT**

REVISIONS	
DATE	DESCRIPTION
12/29/23	TOWN REVIEW

SCALE: 1 INCH = 30 FEET

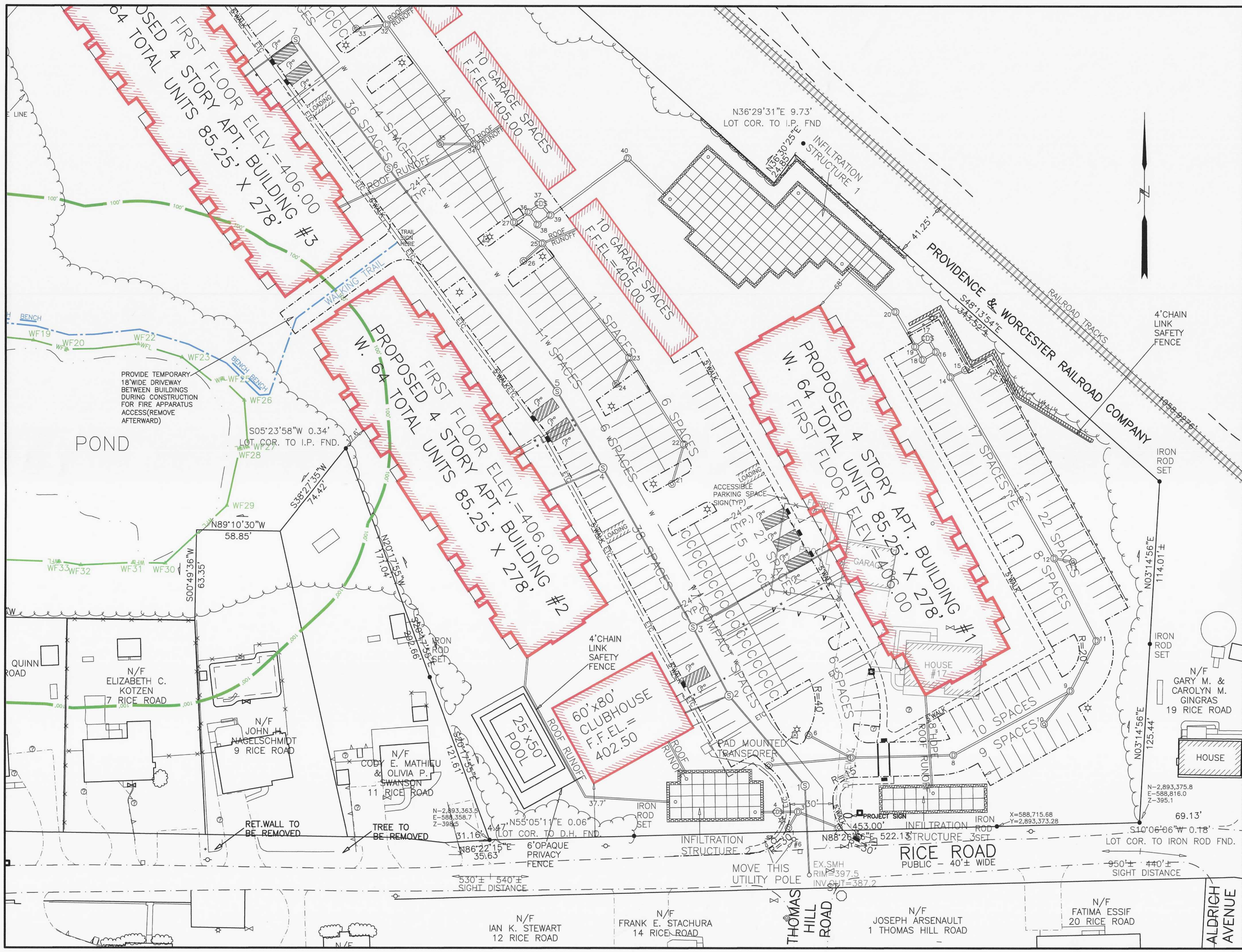
0 15 30 60 90
FEET

0 15 30
METERS

**RICE POND VILLAGE
SITE PLAN OF LAND
IN
MILLBURY, MASSACHUSETTS**

PREPARED FOR
SVJ INVESTMENTS, LLC
118 TURNPIKE ROAD, SUITE 200
SOUTHBOROUGH, MA 01772

GRADING PLAN G3



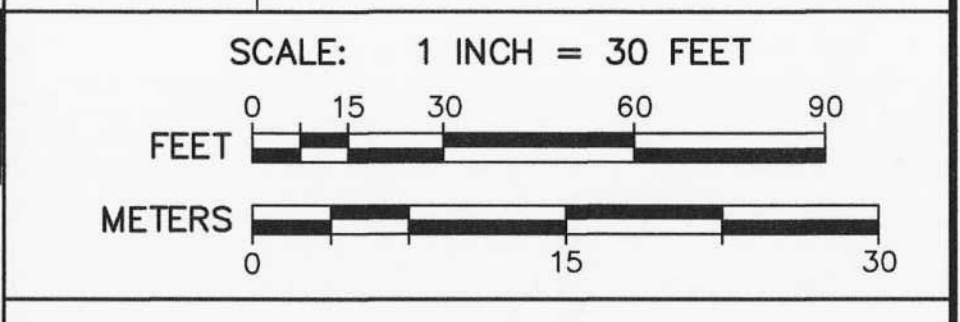
LEGEND

	WFL	WETLAND EDGE
	100'	100' WETLAND BUFFER ZONE LIMIT
	⊕	PROPOSED DRAIN MANHOLE
	⊕	PROPOSED DOUBLE GRATED CATCHBASIN
	⊕	PROPOSED SEWER MANHOLE
	⊕	DRAIN OR SEWER PIPE
	⊕	PROPOSED WATER LINE
	⊕	PROPOSED HYDRANT
	- - -	EXISTING EDGE OF PAVEMENT
	- - -	PROPOSED SLOPED GRANITE CURBING
	⊕	EXISTING UTILITY POLE
	⊕	OVERHEAD WIRES
	⊕	STONE WALL
	⊕	TREE
	⊕	PROPOSED TREELINE
	⊕	DEEP OBSERVATION HOLE
	⊕	PROPOSED WALKING TRAIL
	⊕	ETC
	⊕	PROPOSED ELECTRIC, TELEPHONE, CABLE CONDUIT
	⊕	PROPOSED STREET LIGHT
	⊕	PROPOSED INFILTRATION STRUCTURE TO RECEIVE CAPTURED RUNOFF
	⊕	PROPOSED STOP SIGN
	⊕	PROPOSED HANDICAPPED ACCESSIBLE PARKING SPACE
	⊕	PROPOSED GUARDRAIL

AZIMUTH LAND DESIGN, LLC
Professional Engineers & Erosion Control Specialists
118 Turnpike Road, Suite 200, Southborough, MA 01772
Telephone (508)-485-0137 james@azimuthlanddesign.co

James J. Murphy
Professional Engineer
10/24/2023

CLT. NO.	501	JOB NO.	224-501
DATE:	OCTOBER 24, 2023	DWG NO.	RICEROADMILLBURYCURRENT
REVISIONS			
DATE:	12/29/23	DESCRIPTION	TOWN REVIEW

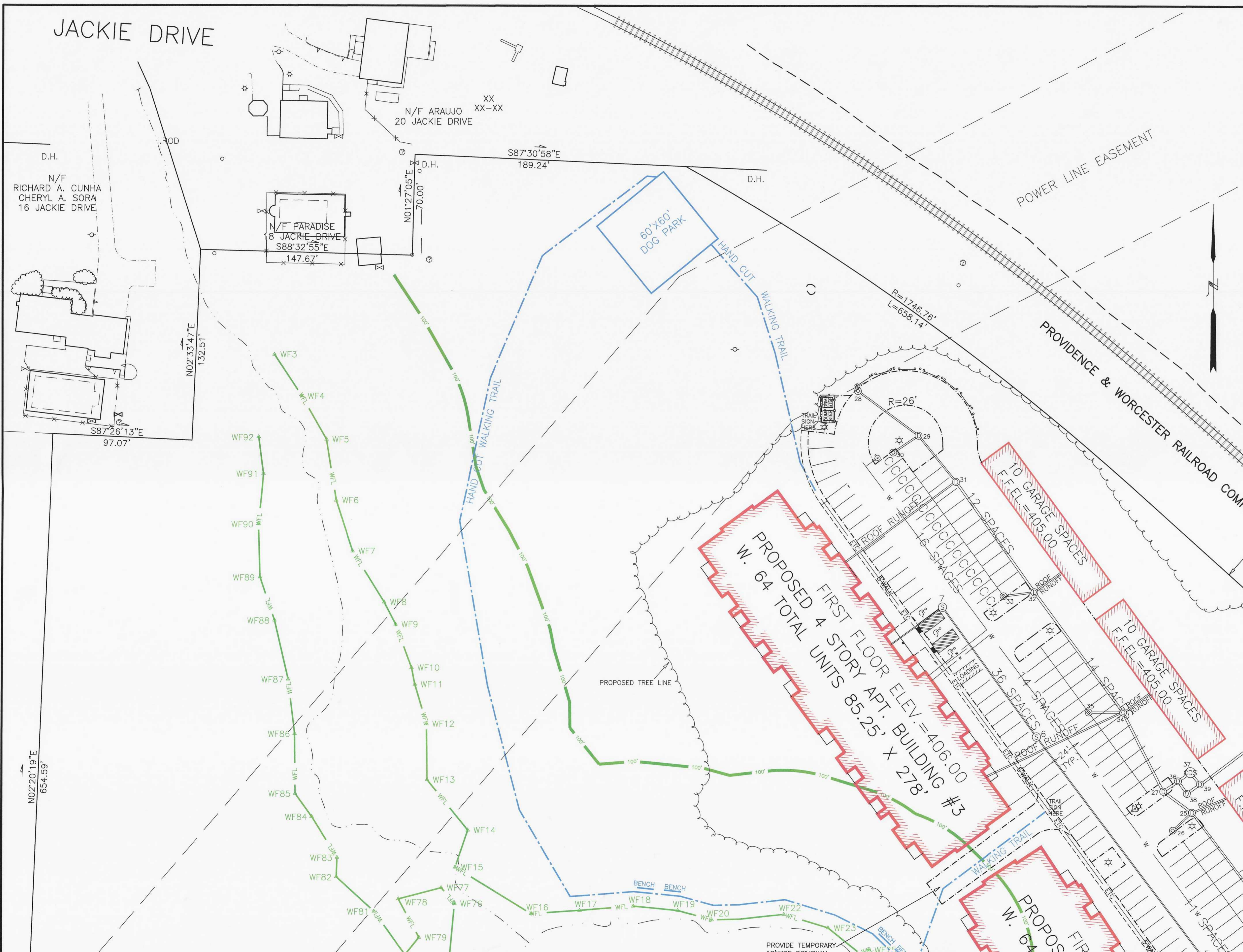


**RICE POND VILLAGE
SITE PLAN OF LAND
IN
MILLBURY, MASSACHUSETTS**

PREPARED FOR
SJV INVESTMENTS, LLC
118 TURNPIKE ROAD, SUITE 200
SOUTHBOROUGH, MA 01772

UTILITY PLAN U1

JACKIE DRIVE

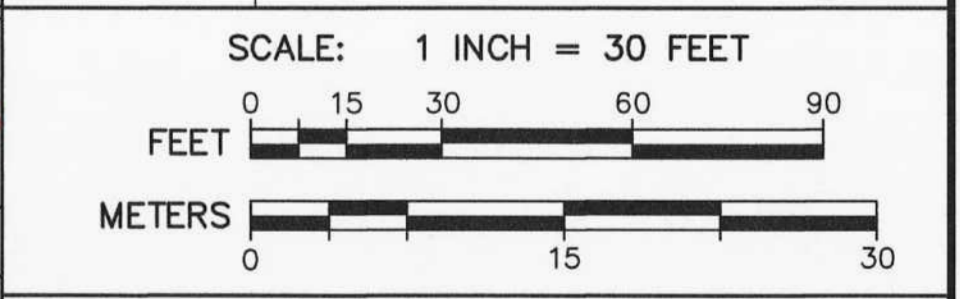


LEGEND

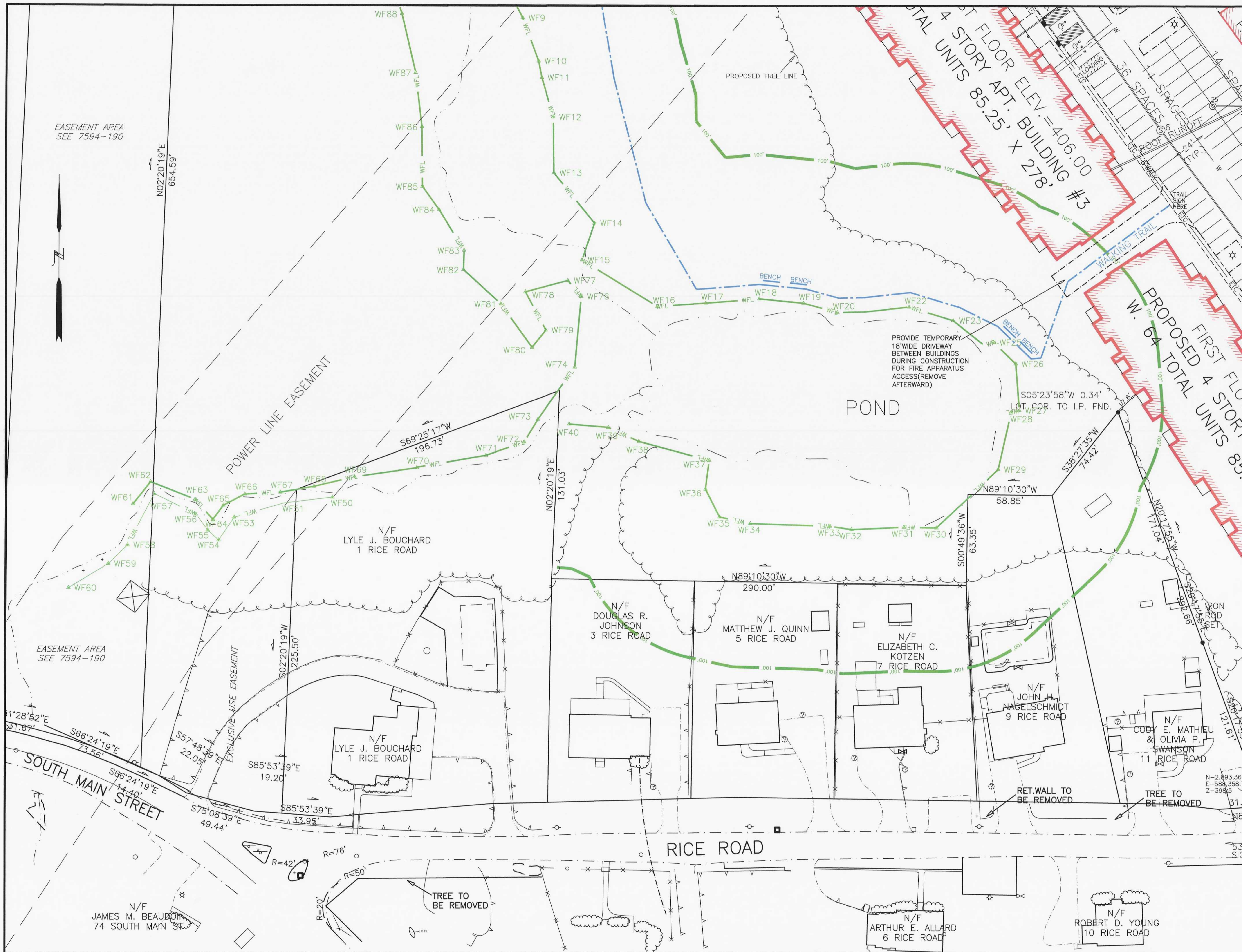
- WFL WETLAND EDGE
- 100' 100' WETLAND BUFFER ZONE LIMIT
- PROPOSED DRAIN MANHOLE
- PROPOSED SEWER MANHOLE
- PROPOSED DOUBLE GRATED CATCHBASIN
- OR PROPOSED UNDERGROUND DRAIN OR SEWER PIPE
- PROPOSED WATER LINE
- PROPOSED HYDRANT
- EXISTING EDGE OF PAVEMENT
- PROPOSED SLOPED GRANITE CURBING
- #6" OHW EXISTING UTILITY POLE OVERHEAD WIRES
- STONE WALL
- TREE
- PROPOSED TREELINE
- 23 DEEP OBSERVATION HOLE
- PROPOSED WALKING TRAIL
- ETC PROPOSED ELECTRIC, TELEPHONE, CABLE CONDUIT
- PROPOSED STREET LIGHT
- INFILTRATION AREA PROPOSED INFILTRATION STRUCTURE TO RECEIVE CAPTURED RUNOFF
- ST PROPOSED STOP SIGN
- PROPOSED HANDICAPPED ACCESSIBLE PARKING SPACE
- PROPOSED GUARDRAIL

AZIMUTH LAND DESIGN, LLC
 Professional Engineers & Erosion Control Specialists
 118 Turnpike Road, Suite 200, Southborough, MA 01772
 Telephone (508)-485-0137 james@azimuthlanddesign.co

CLT. NO.	501	JOB NO.	224-501
DATE:	OCTOBER 24, 2023	DWG NO.	RICEROADMILLBURYCURRENT
REVISIONS			
DATE:	12/29/23	DESCRIPTION	TOWN REVIEW



RICE POND VILLAGE
 SITE PLAN OF LAND
 IN
 MILLBURY, MASSACHUSETTS
 PREPARED FOR
 SJV INVESTMENTS, LLC
 118 TURNPIKE ROAD, SUITE 200
 SOUTHBOROUGH, MA 01772

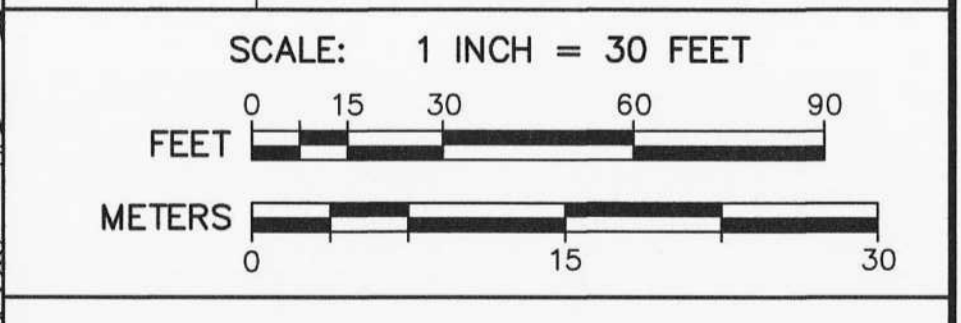


LEGEND

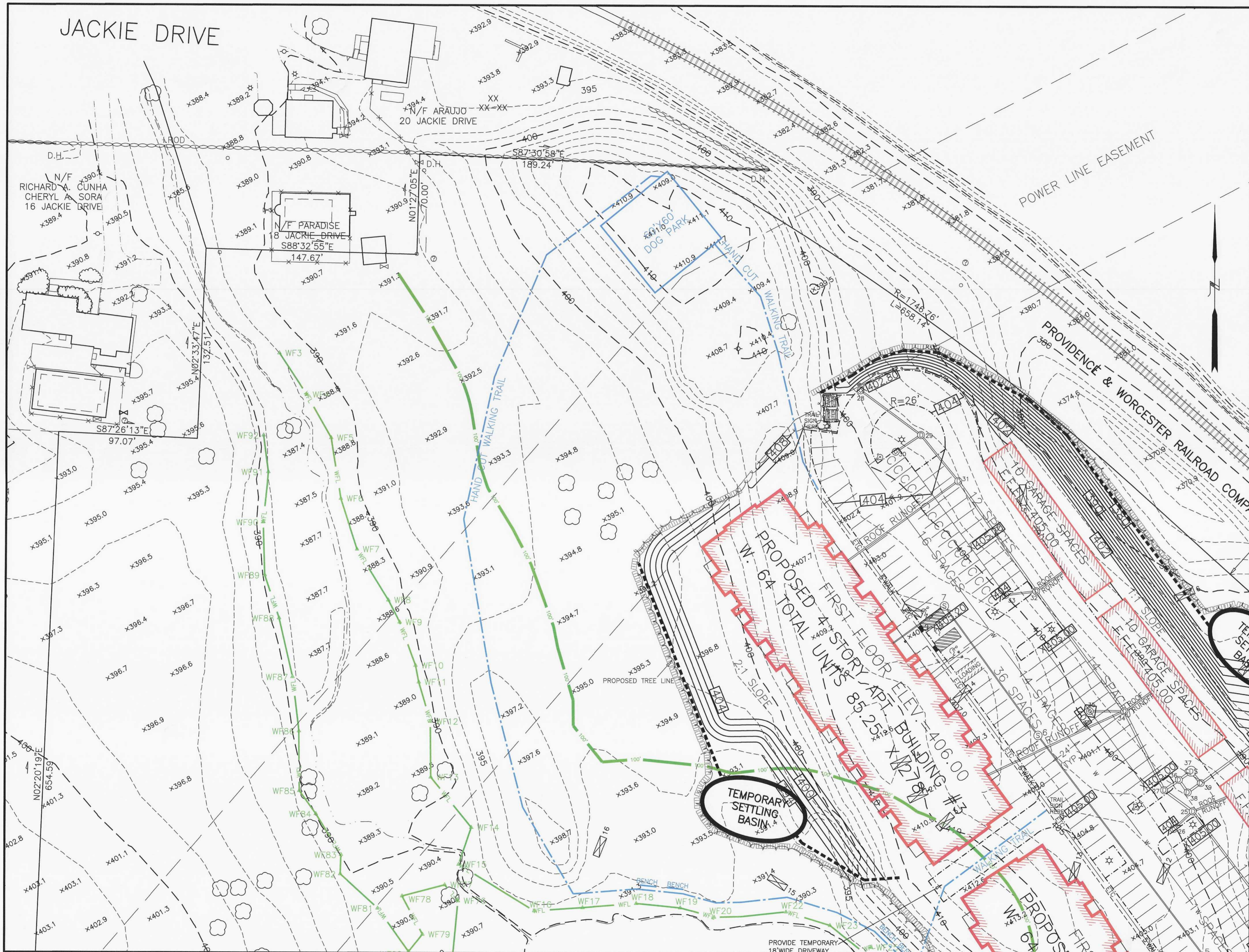
	WFL	WETLAND EDGE
	100'	100' WETLAND BUFFER ZONE LIMIT
	⊕	PROPOSED DRAIN MANHOLE
	⊕	PROPOSED DOUBLE GRATED CATCHBASIN
	⊕	PROPOSED SEWER MANHOLE
	⊕	PROPOSED UNDERGROUND DRAIN OR SEWER PIPE
	⊕	PROPOSED WATER LINE
	⊕	PROPOSED HYDRANT
	- - -	EXISTING EDGE OF PAVEMENT
	- - -	PROPOSED SLOPED GRANITE CURBING
	#6	EXISTING UTILITY POLE
	OHW	OVERHEAD WIRES
	—	STONE WALL
	—	TREE
	—	PROPOSED TREELINE
	—	DEEP OBSERVATION HOLE
	—	PROPOSED WALKING TRAIL
	—	PROPOSED ELECTRIC, TELEPHONE, CABLE CONDUIT
	—	PROPOSED STREET LIGHT
	—	PROPOSED INFILTRATION STRUCTURE TO RECEIVE CAPTURED RUNOFF
	—	PROPOSED STOP SIGN
	—	PROPOSED HANDICAPPED ACCESSIBLE PARKING SPACE
	—	PROPOSED GUARDRAIL

AZIMUTH LAND DESIGN, LLC
 Professional Engineers & Erosion Control Specialists
 118 Turnpike Road, Suite 200, Southborough, MA 01772
 Telephone (508)-485-0137 james@azimuthlanddesign.co

CLT. NO.	501	JOB NO.	224-501
DATE:	OCTOBER 24, 2023	DWG NO.	RICEROADMILLBURYCURRENT
REVISIONS			
DATE:	12/29/23	DESCRIPTION	TOWN REVIEW



**RICE POND VILLAGE
 SITE PLAN OF LAND**
 IN
MILLBURY, MASSACHUSETTS
 PREPARED FOR
SVJ INVESTMENTS, LLC
 118 TURNPIKE ROAD, SUITE 200
 SOUTHBOROUGH, MA 01772

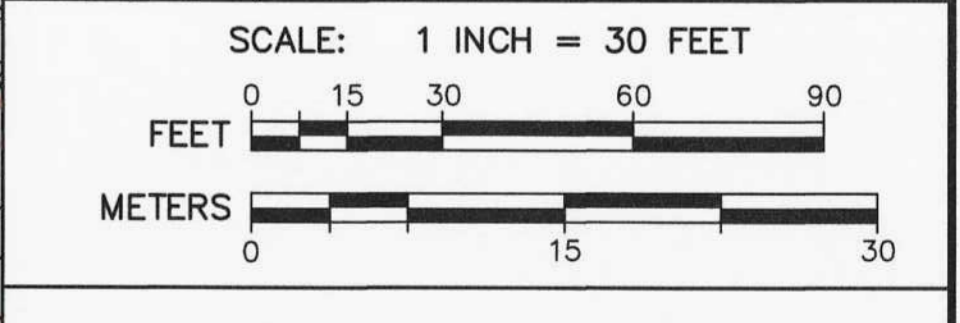


LEGEND

	WFL	WETLAND EDGE
	100'	100' WETLAND BUFFER ZONE LIMIT
	10'	10' CONTOUR
	400	PROPOSED CONTOUR
	x403.0	EXISTING SPOT GRADE
	x392.50	PROPOSED SPOT GRADE
	⊕	PROPOSED DRAIN MANHOLE
	⊕	PROPOSED CATCHBASIN
	⊕ OR ⊕	PROPOSED DOUBLE GRATED CATCHBASIN
	⊕	PROPOSED SEWER MANHOLE
	⊕	PROPOSED UNDERGROUND DRAIN OR SEWER PIPE
	W	PROPOSED WATER LINE
	⊕	PROPOSED HYDRANT
		EXISTING EDGE OF PAVEMENT
		PROPOSED SLOPED GRANITE CURBING
	#6 ♂	EXISTING UTILITY POLE
	OHW	OVERHEAD WIRES
		STONE WALL
		TREE
	23	PROPOSED TREELINE
		DEEP OBSERVATION HOLE
		PROPOSED WALKING TRAIL
	ETC	PROPOSED ELECTRIC, TELEPHONE, CABLE CONDUIT
		PROPOSED STREET LIGHT
		PROPOSED INFILTRATION STRUCTURE TO RECEIVE CAPTURED RUNOFF
		PROPOSED SEDIMENT CONTROL BARRIER
	ST	PROPOSED STOP SIGN
		PROPOSED DIVERSION SWALE
		PROPOSED HANDICAPPED ACCESSIBLE PARKING SPACE
		PROPOSED GUARDRAIL
		PROPOSED STONE FILLED SITE ENTRANCE MAT

AZIMUTH LAND DESIGN, LLC
Professional Engineers & Erosion Control Specialists
118 Turnpike Road, Suite 200, Southborough, MA 01772
Telephone (508)-485-0137 james@azimuthlanddesign.co

CLT. NO.	501	JOB NO.	224-501
DATE:	OCTOBER 24, 2023	DWG. NO.	RICEROADMILLBURYCURRENT
REVISIONS			
DATE:	12/29/23	DESCRIPTION	TOWN REVIEW



**RICE POND VILLAGE
SITE PLAN OF LAND
IN
MILLBURY, MASSACHUSETTS**

PREPARED FOR
SJV INVESTMENTS, LLC
118 TURNPIKE ROAD, SUITE 200
SOUTHBOROUGH, MA 01772

EROSION & SEDIMENTATION CONTROL PLAN ESC2