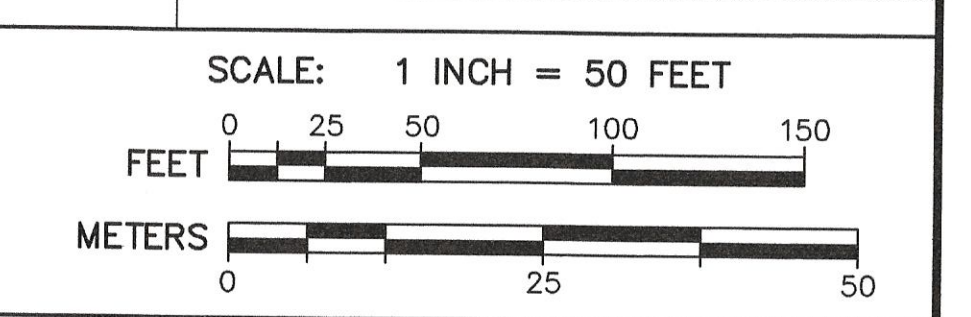


KEY

WFL	WETLAND EDGE
--- (dashed)	100' BUFFER ZONE EDGE
⊙	DRAIN MANHOLE
□	CATCHBASIN
— (solid)	EXISTING UNDERGROUND DRAIN OR SEWER PIPE
— (dashed)	WATER GATE
⊕	HYDRANT
— (dashed)	EXISTING EDGE OF PAVEMENT
— (dashed)	EXISTING UTILITY POLE
— (dashed)	OVERHEAD WIRES
#6	10' CONTOUR
— (dashed)	2' CONTOUR
— (dashed)	STONE WALL
⊙	TREE
— (dashed)	TREELINE
⊗	DEEP OBSERVATION HOLE
— (dashed)	SOIL SERIES BOUNDARY FROM THE NRCS WEB SOIL SURVEY
①	SUBCATCHMENT
— (dashed)	TIME OF CONCENTRATION FLOW PATH

AZIMUTH LAND DESIGN, LLC
 Professional Engineers & Erosion Control Specialists
 325 Donald Lynch Boulevard, Suite 100, Marlborough, MA 01752
 Telephone (508) 455-0137 jamest@azimuthlanddesign.co

CLT. NO.	3151	JOB NO.	186-3234
DATE:	MARCH 26, 2021	DWG NO.	RICEROADCURRENT
REVISIONS		DESCRIPTION	
DATE:			

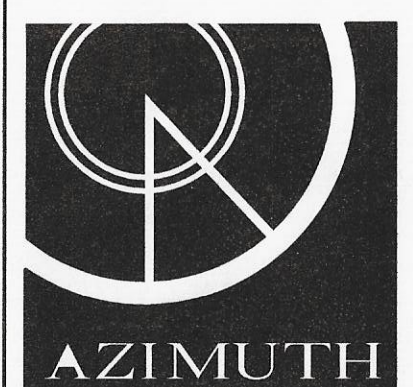


PREDEVELOPMENT DRAINAGE AREA PLAN AT 17 RICE ROAD
 IN
MILLBURY, MASSACHUSETTS
 PREPARED FOR APPLICANT
WHITNEY STREET HOME BUILDERS, LLC
 ONE GOLDEN COURT
 WESTBOROUGH, MA 01581



LEGEND

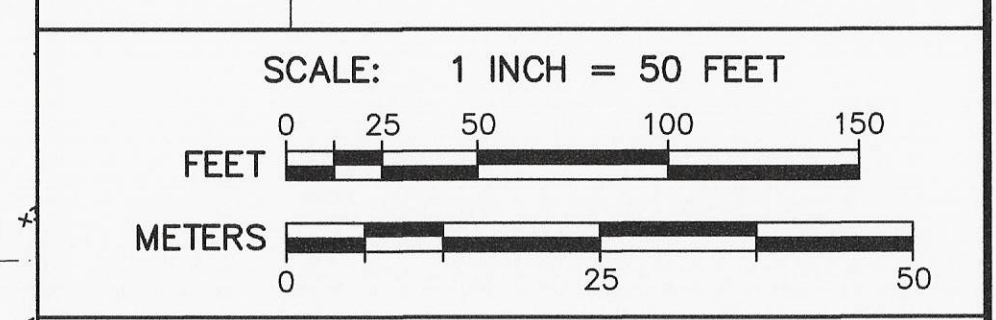
- WFL WETLAND EDGE
- 100' WETLAND BUFFER ZONE LIMIT
- 2' CONTOUR
- PROPOSED CONTOUR
- PROPOSED SPOT GRADE
- EXISTING SPOT GRADE
- PROPOSED DRAIN MANHOLE
- PROPOSED DOUBLE GRATED CATCHBASIN
- PROPOSED SEWER MANHOLE
- DRAIN OR SEWER PIPE
- PROPOSED WATER LINE
- PROPOSED HYDRANT
- EXISTING EDGE OF PAVEMENT
- PROPOSED SLOPED GRANITE CURBING
- EXISTING UTILITY POLE
- OVERHEAD WIRES
- STONE WALL
- TREE
- PROPOSED TREELINE
- DEEP OBSERVATION HOLE
- PROPOSED WALKING TRAIL
- ETC
- PROPOSED ELECTRIC, TELEPHONE, CABLE CONDUIT
- PROPOSED STREET LIGHT
- SOIL SERIES BOUNDARY FROM THE NRCS WEB SOIL SURVEY
- 11 SUBCATCHMENT
- TIME OF CONCENTRATION FLOW PATH



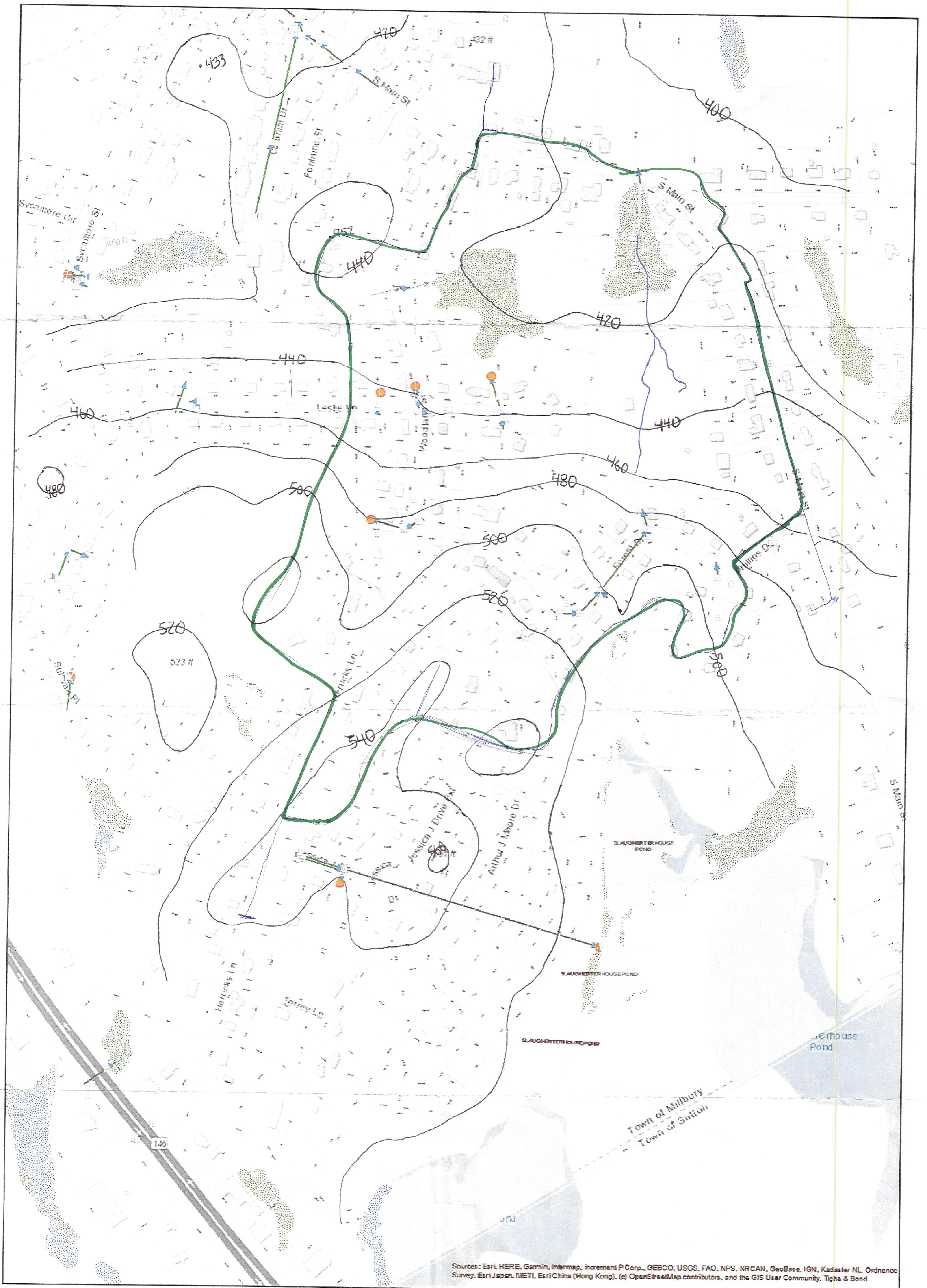
AZIMUTH LAND DESIGN, LLC
 Professional Engineers & Erosion Control Specialists
 118 Turnpike Road, Suite 200, Southborough, MA 01772
 Telephone (508)-485-0137 james@azimuthlanddesign.co

CLT. NO.	501	JOB NO.	224-501
DATE:	OCTOBER 24, 2023	DWG NO.	RICEROADMILLBURYCURRENT

DATE:	REVISIONS DESCRIPTION



POSTDEVELOPMENT DRAINAGE AREA PLAN AT 17 RICE ROAD
 IN
MILLBURY, MASSACHUSETTS
 PREPARED FOR
SVJ INVESTMENTS, LLC
 118 TURNPIKE ROAD, SUITE 200
 SOUTHBOROUGH, MA 01772



Sources: Esri, HERE, Garmin, Intermap, increment P Corp., GEBCO, USGS, FAO, NPS, NRCAN, GeoBase, IGN, Kadaster NL, Ordnance Survey, Esri Japan, METI, Esri China (Hong Kong), (c) OpenStreetMap contributors, and the GIS User Community, Tighe & Bond

Offsite drainage area 1=400

4/5/2021 8:53:14 AM

Scale: 1"=400'

Scale is approximate

The information depicted on this map is for planning purposes only. It is not adequate for legal boundary definition, regulatory interpretation, or parcel-level analyses.

