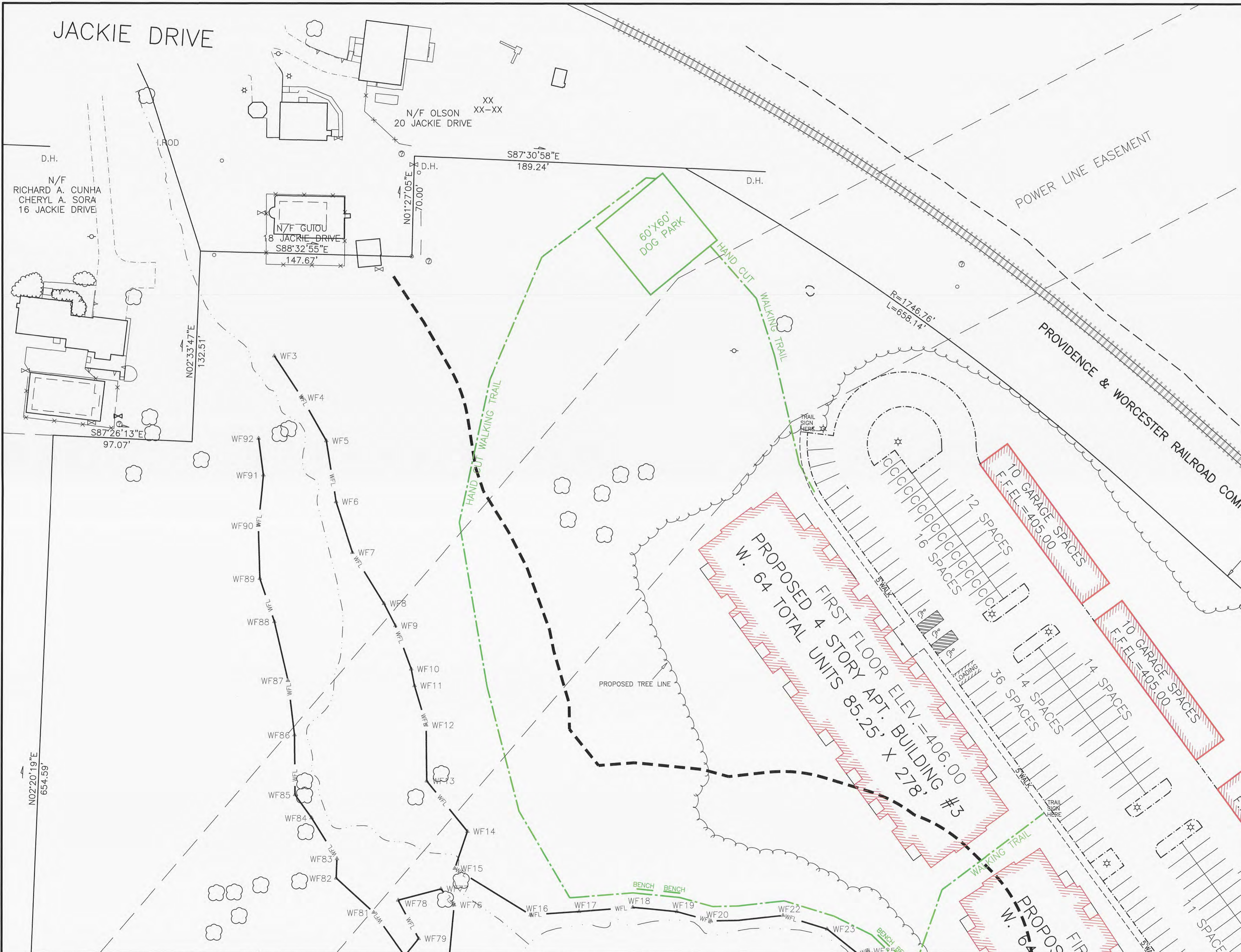


JACKIE DRIVE



LEGEND

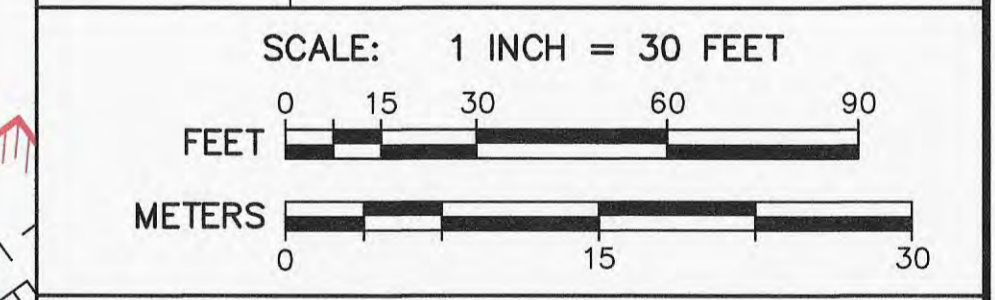
- WFL WETLAND EDGE
- 100' WETLAND BUFFER ZONE LIMIT
- EXISTING EDGE OF PAVEMENT
- PROPOSED SLOPED GRANITE CURBING
- #6p EXISTING UTILITY POLE
- OHV OVERHEAD WIRES
- STONE WALL
- TREE
- PROPOSED TREELINE
- DEEP OBSERVATION HOLE
- PROPOSED WALKING TRAIL
- ETC PROPOSED ELECTRIC, TELEPHONE, CABLE CONDUIT
- PROPOSED STREET LIGHT
- PROPOSED INFILTRATION STRUCTURE TO RECEIVE CAPTURED RUNOFF
- ST PROPOSED STOP SIGN
- PROPOSED HANDICAPPED ACCESSIBLE PARKING SPACE

AZIMUTH LAND DESIGN, LLC
 Professional Engineers & Erosion Control Specialists
 118 Turnpike Road, Suite 200, Southborough, MA 01772
 Telephone (508)-485-0137 james@azimuthlanddesign.co

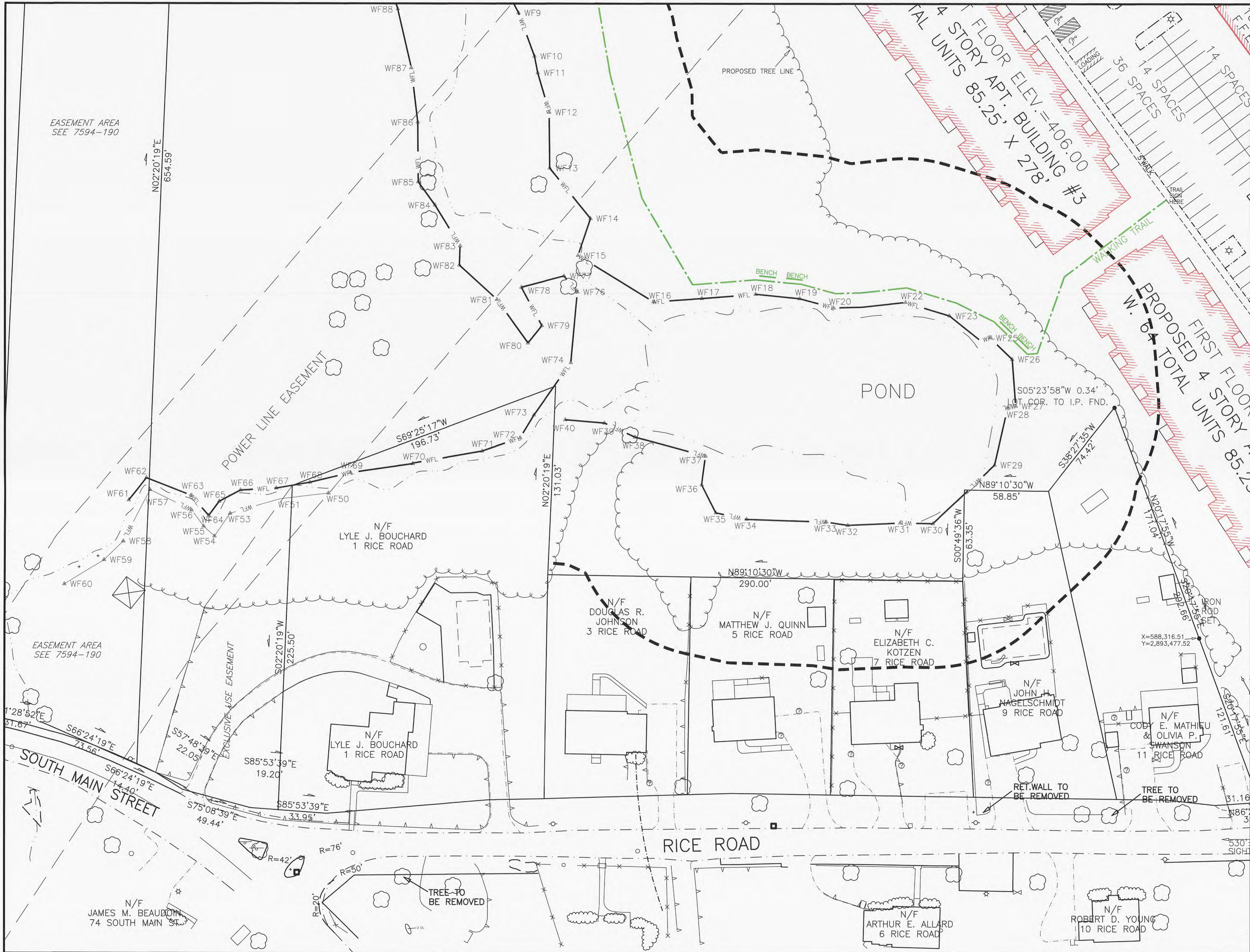
CLT. NO. 501 JOB NO. 224-501

DATE: OCTOBER 24, 2023 DWG NO. RICEROADMILLBURYCURRENT

REVISIONS	
DATE:	DESCRIPTION



RICE POND VILLAGE
 SITE PLAN OF LAND
 IN
 MILLBURY, MASSACHUSETTS
 PREPARED FOR
SVJ INVESTMENTS, LLC
 118 TURNPIKE ROAD, SUITE 200
 SOUTHBOROUGH, MA 01772



LEGEND

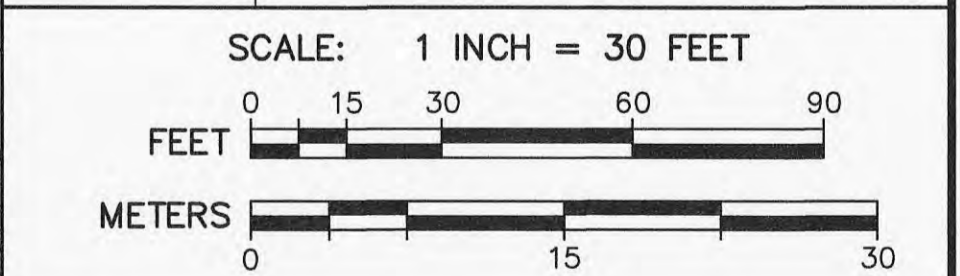
	WETLAND EDGE
	100' WETLAND BUFFER ZONE LIMIT
	EXISTING EDGE OF PAVEMENT
	PROPOSED SLOPED GRANITE CURBING
	EXISTING UTILITY POLE
	OVERHEAD WIRES
	STONE WALL
	TREE
	PROPOSED TREELINE
	DEEP OBSERVATION HOLE
	PROPOSED WALKING TRAIL
	PROPOSED ELECTRIC, TELEPHONE, CABLE CONDUIT
	PROPOSED STREET LIGHT
	PROPOSED INFILTRATION STRUCTURE TO RECEIVE CAPTURED RUNOFF
	PROPOSED STOP SIGN
	PROPOSED HANDICAPPED ACCESSIBLE PARKING SPACE

AZIMUTH LAND DESIGN, LLC
Professional Engineers & Erosion Control Specialists
118 Turnpike Road, Suite 200, Southborough, MA 01772
Telephone (508)-485-0137 james@azimuthlanddesign.co

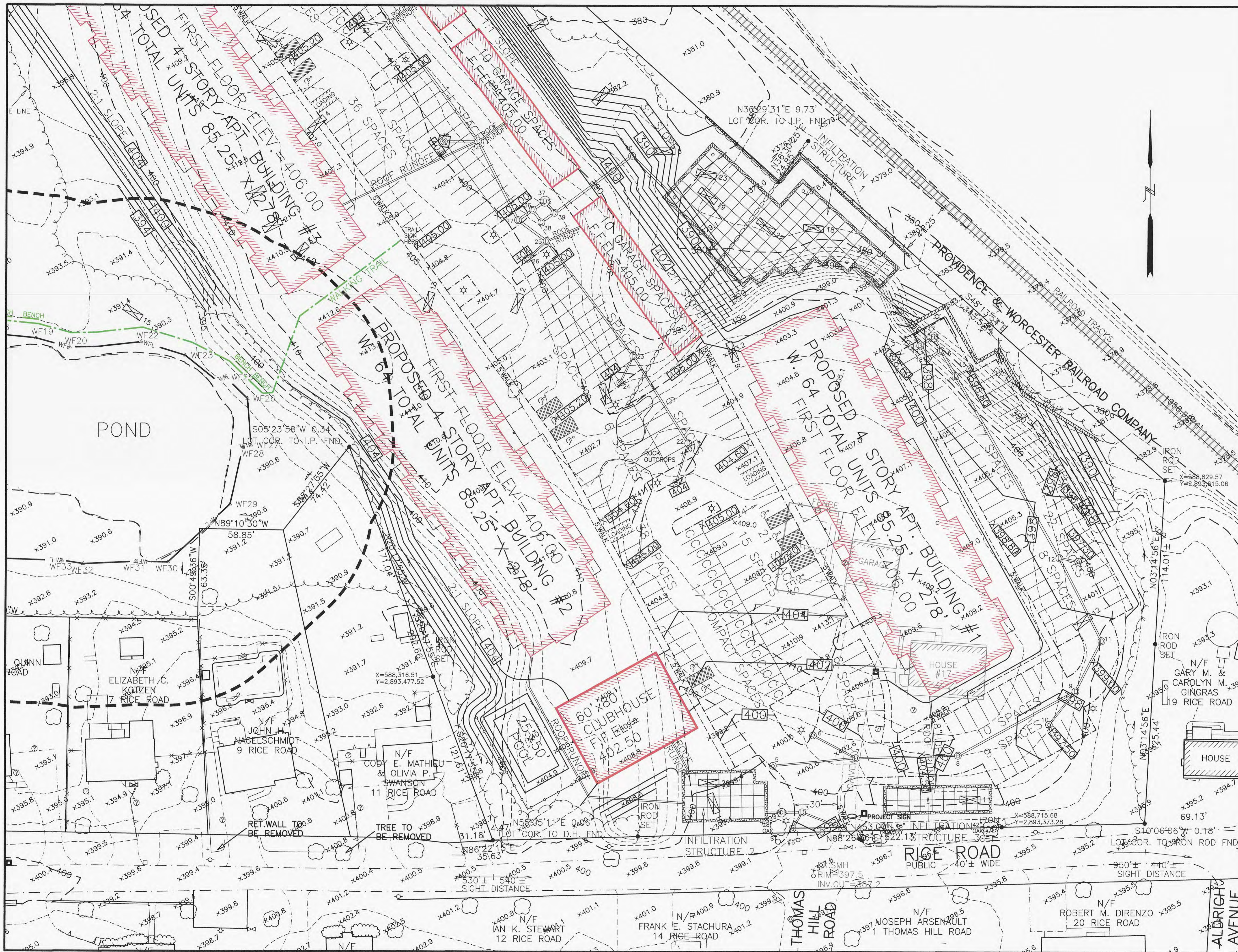
CLT. NO.	501	JOB NO.	224-501
----------	-----	---------	---------

DATE:	OCTOBER 24, 2023	DWG. NO.	RICEROADMILLBURYCURRENT
-------	------------------	----------	-------------------------

REVISIONS	
DATE:	DESCRIPTION



**RICE POND VILLAGE
SITE PLAN OF LAND**
IN
MILLBURY, MASSACHUSETTS
PREPARED FOR
SJV INVESTMENTS, LLC
118 TURNPIKE ROAD, SUITE 200
SOUTHBOROUGH, MA 01772

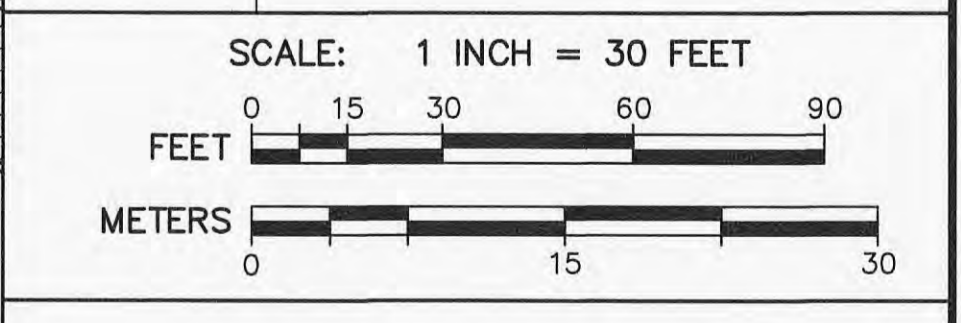


LEGEND

	WETLAND EDGE
	100' WETLAND BUFFER ZONE LIMIT
	2' CONTOUR
	PROPOSED CONTOUR
	EXISTING SPOT GRADE
	PROPOSED SPOT GRADE
	PROPOSED DRAIN MANHOLE
	PROPOSED CATCHBASIN
	PROPOSED DOUBLE GRATED CATCHBASIN
	PROPOSED SEWER MANHOLE
	PROPOSED UNDERGROUND DRAIN OR SEWER PIPE
	PROPOSED WATER LINE
	PROPOSED HYDRANT
	EXISTING EDGE OF PAVEMENT
	PROPOSED SLOPED GRANITE CURBING
	EXISTING UTILITY POLE
	OVERHEAD WIRES
	STONE WALL
	TREE
	PROPOSED TREELINE
	DEEP OBSERVATION HOLE
	PROPOSED WALKING TRAIL
	ETC
	PROPOSED ELECTRIC, TELEPHONE, CABLE CONDUIT
	PROPOSED STREET LIGHT
	PROPOSED INFILTRATION STRUCTURE TO RECEIVE CAPTURED RUNOFF
	PROPOSED STOP SIGN
	PROPOSED HANDICAPPED ACCESSIBLE PARKING SPACE
	PROPOSED TREES
	PROPOSED SHRUBS

AZIMUTH LAND DESIGN, LLC
 Professional Engineers & Erosion Control Specialists
 118 Turnpike Road, Suite 200, Southborough, MA 01772
 Telephone (508)-485-0137 james@azimuthlanddesign.co

CLT. NO.	501	JOB NO.	224-501
DATE:	OCTOBER 24, 2023	DWG. NO.	RICEROADMILLBURYCURRENT
REVISIONS		DESCRIPTION	
DATE:			



**RICE POND VILLAGE
 SITE PLAN OF LAND
 IN
 MILLBURY, MASSACHUSETTS**

PREPARED FOR
SJV INVESTMENTS, LLC
 118 TURNPIKE ROAD, SUITE 200
 SOUTHBOROUGH, MA 01772



LEGEND

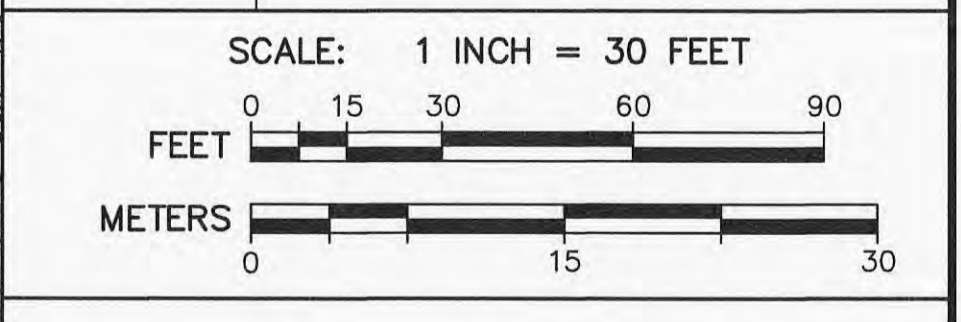
	WETLAND EDGE
	100' WETLAND BUFFER ZONE LIMIT
	2' CONTOUR
	10' CONTOUR
	PROPOSED CONTOUR
	EXISTING SPOT GRADE
	PROPOSED SPOT GRADE
	PROPOSED DRAIN MANHOLE
	PROPOSED DOUBLE GRATED CATCHBASIN
	PROPOSED SEWER MANHOLE
	PROPOSED UNDERGROUND DRAIN OR SEWER PIPE
	PROPOSED WATER LINE
	PROPOSED HYDRANT
	EXISTING EDGE OF PAVEMENT
	PROPOSED SLOPED GRANITE CURBING
	EXISTING UTILITY POLE
	OVERHEAD WIRES
	STONE WALL
	TREE
	PROPOSED TREELINE
	DEEP OBSERVATION HOLE
	PROPOSED WALKING TRAIL
	ETC
	PROPOSED ELECTRIC, TELEPHONE, CABLE CONDUIT
	PROPOSED STREET LIGHT
	PROPOSED INFILTRATION STRUCTURE TO RECEIVE CAPTURED RUNOFF
	PROPOSED STOP SIGN
	PROPOSED HANDICAPPED ACCESSIBLE PARKING SPACE
	PROPOSED TREES
	PROPOSED SHRUBS




James I. Reynolds
10/24/2023

AZIMUTH LAND DESIGN, LLC
Professional Engineers & Erosion Control Specialists
118 Turnpike Road, Suite 200, Southborough, MA 01772
Telephone (508)-485-0137 james@azimuthlanddesign.co

CLT. NO.	501	JOB NO.	224-501
DATE:	OCTOBER 24, 2023	DWG NO.	RICEROADMILLBURYCURRENT
REVISIONS			
DATE:		DESCRIPTION	



**RICE POND VILLAGE
SITE PLAN OF LAND**
IN
MILLBURY, MASSACHUSETTS
PREPARED FOR
SJV INVESTMENTS, LLC
118 TURNPIKE ROAD, SUITE 200
SOUTHBOROUGH, MA 01772



LEGEND

	WETLAND EDGE
	100' WETLAND BUFFER ZONE LIMIT
	2' CONTOUR
	PROPOSED CONTOUR
	EXISTING SPOT GRADE
	PROPOSED SPOT GRADE
	PROPOSED DRAIN MANHOLE
	PROPOSED CATCHBASIN
	PROPOSED DOUBLE GRATED CATCHBASIN
	PROPOSED SEWER MANHOLE
	PROPOSED UNDERGROUND DRAIN OR SEWER PIPE
	PROPOSED WATER LINE
	PROPOSED HYDRANT
	EXISTING EDGE OF PAVEMENT
	PROPOSED SLOPED GRANITE CURBING
	EXISTING UTILITY POLE
	OVERHEAD WIRES
	STONE WALL
	TREE
	PROPOSED TREELINE
	DEEP OBSERVATION HOLE
	PROPOSED ELECTRIC TRAIL
	PROPOSED ELECTRIC, TELEPHONE, CABLE CONDUIT
	PROPOSED STREET LIGHT
	PROPOSED INFILTRATION STRUCTURE TO RECEIVE CAPTURED RUNOFF
	PROPOSED STOP SIGN
	PROPOSED HANDICAPPED ACCESSIBLE PARKING SPACE
	PROPOSED TREES
	PROPOSED SHRUBS

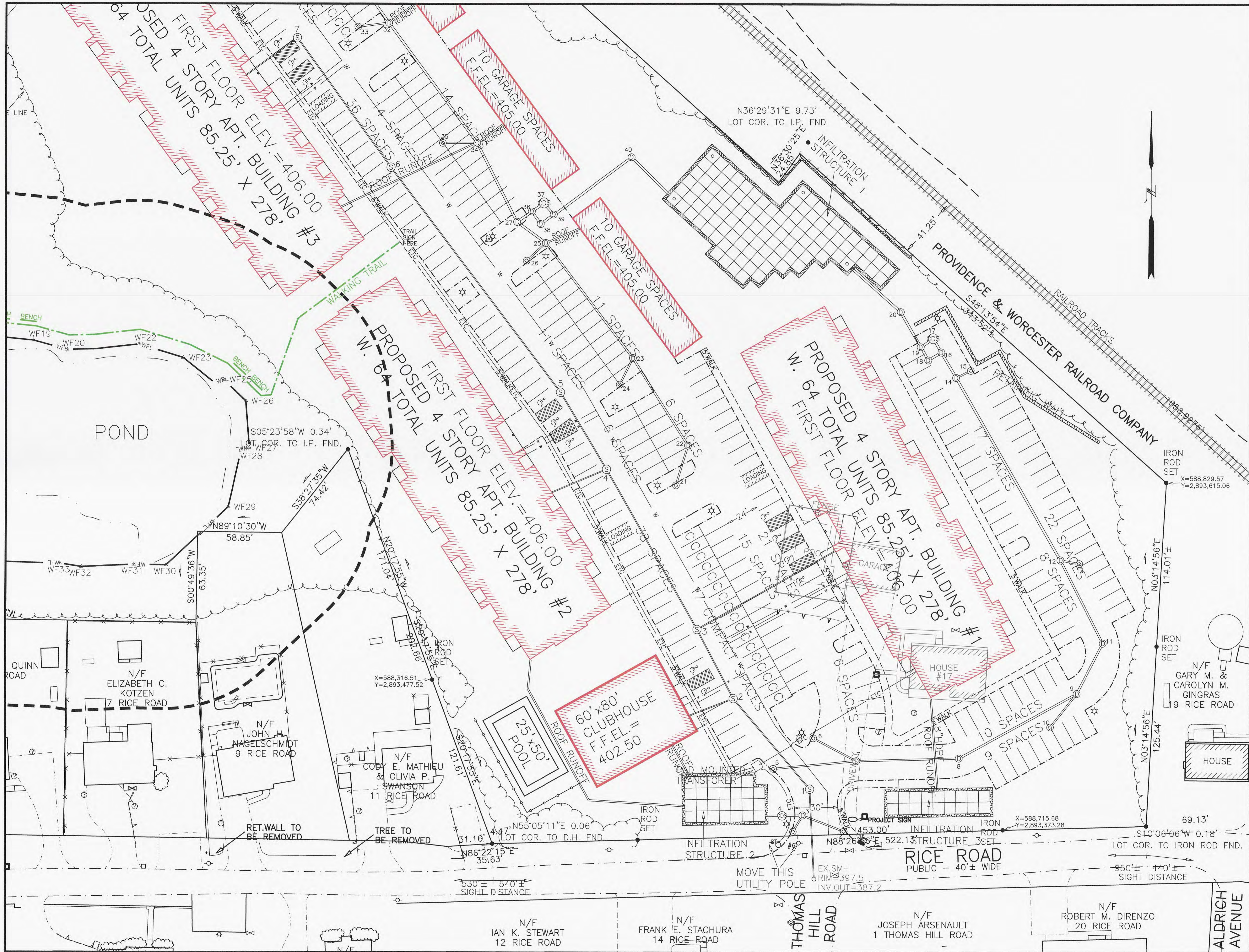
AZIMUTH LAND DESIGN, LLC
 Professional Engineers & Erosion Control Specialists
 118 Turnpike Road, Suite 200, Southborough, MA 01772
 Telephone (508)-485-0137 james@azimuthlanddesign.co

CLT. NO.	501	JOB NO.	224-501
DATE:	OCTOBER 24, 2023	DWG NO.	RICEROADMILLBURYCURRENT
REVISIONS			
DATE:		DESCRIPTION	
SCALE: 1 INCH = 30 FEET			

**RICE POND VILLAGE
 SITE PLAN OF LAND
 IN
 MILLBURY, MASSACHUSETTS**

PREPARED FOR
SVJ INVESTMENTS, LLC
 118 TURNPIKE ROAD, SUITE 200
 SOUTHBOROUGH, MA 01772

GRADING PLAN G3



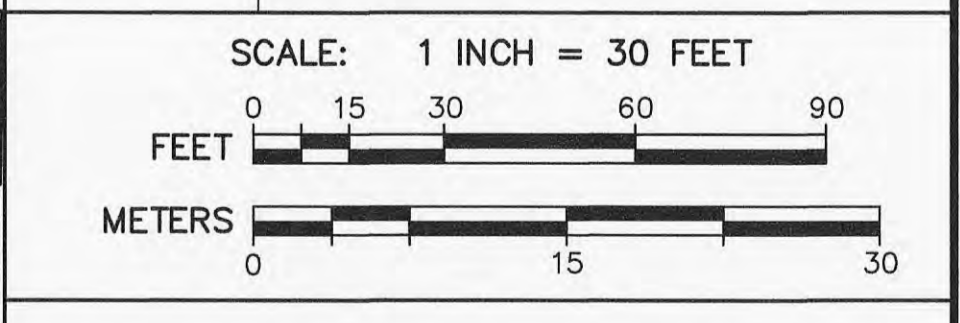
LEGEND

WFL	WETLAND EDGE
100' WETLAND BUFFER ZONE LIMIT	
⊕	PROPOSED DRAIN MANHOLE
⊕	PROPOSED CATCHBASIN
⊕ OR ⊕	PROPOSED DOUBLE GRATED CATCHBASIN
⊕	PROPOSED SEWER MANHOLE
—	PROPOSED UNDERGROUND DRAIN OR SEWER PIPE
W	PROPOSED WATER LINE
⊕	PROPOSED HYDRANT
---	EXISTING EDGE OF PAVEMENT
---	PROPOSED SLOPED GRANITE CURBING
#6 Ⓢ	EXISTING UTILITY POLE
---	OVERHEAD WIRES
---	STONE WALL
⊕	TREE
⊕	PROPOSED TREELINE
⊕	DEEP OBSERVATION HOLE
---	PROPOSED WALKING TRAIL
---	ETC
⊕	PROPOSED ELECTRIC, TELEPHONE, CABLE CONDUIT
⊕	PROPOSED STREET LIGHT
INFILTRATION AREA	PROPOSED INFILTRATION STRUCTURE TO RECEIVE CAPTURED RUNOFF
ST	PROPOSED STOP SIGN
⊕	PROPOSED HANDICAPPED ACCESSIBLE PARKING SPACE
⊕	PROPOSED TREES
⊕	PROPOSED SHRUBS

AZIMUTH LAND DESIGN, LLC
Professional Engineers & Erosion Control Specialists
118 Turnpike Road, Suite 200, Southborough, MA 01772
Telephone (508)-485-0137 james@azimuthlanddesign.co

James I. Jett 10/24/2023
Professional Engineer License No. 0000000000

CLT. NO.	501	JOB NO.	224-501
DATE:	OCTOBER 24, 2023	DWG. NO.	RICEROADMILLBURYCURRENT
DATE:		REVISIONS DESCRIPTION	

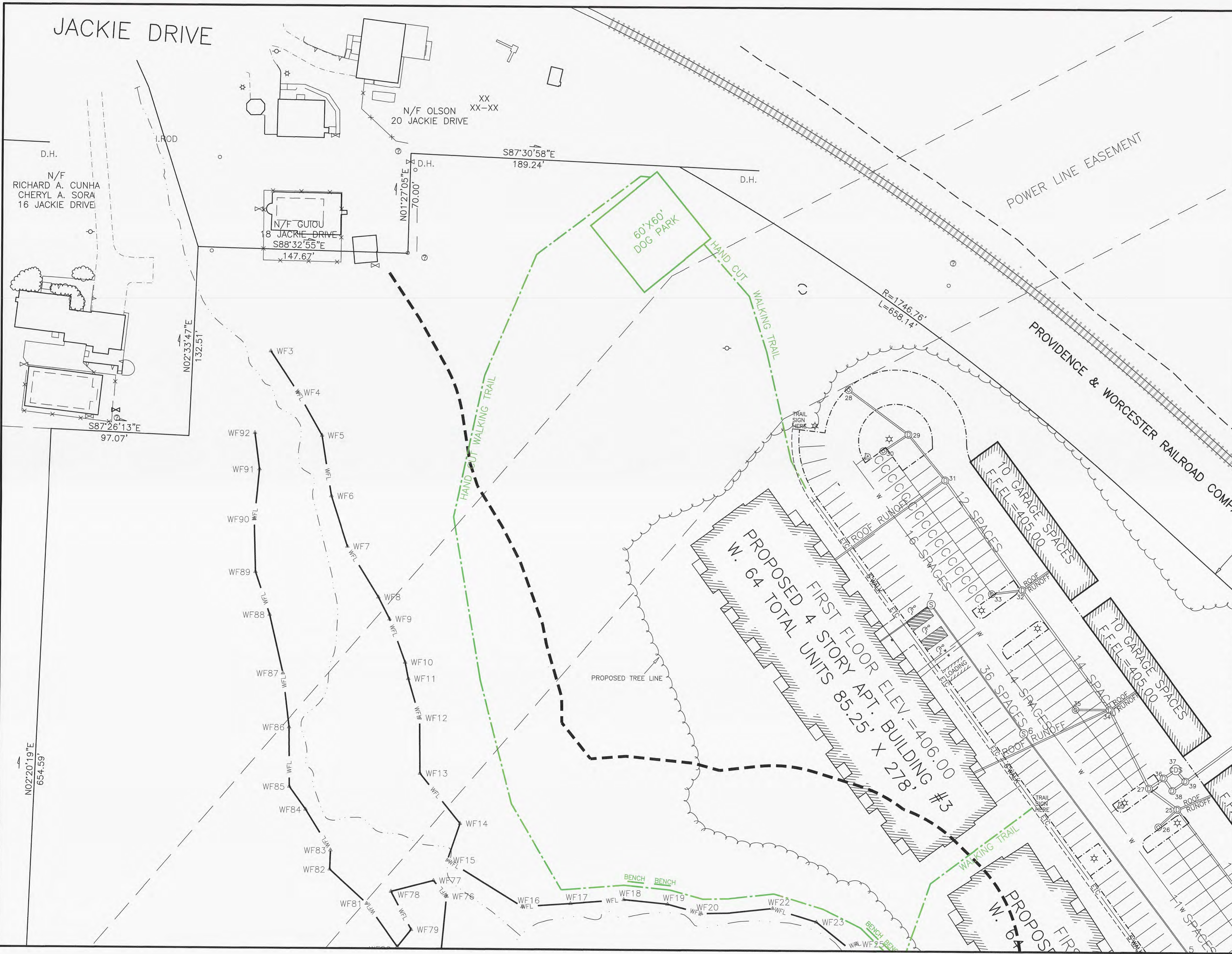


**RICE POND VILLAGE
SITE PLAN OF LAND
IN
MILLBURY, MASSACHUSETTS**

PREPARED FOR
SJV INVESTMENTS, LLC
118 TURNPIKE ROAD, SUITE 200
SOUTHBOROUGH, MA 01772

UTILITY PLAN U1

JACKIE DRIVE

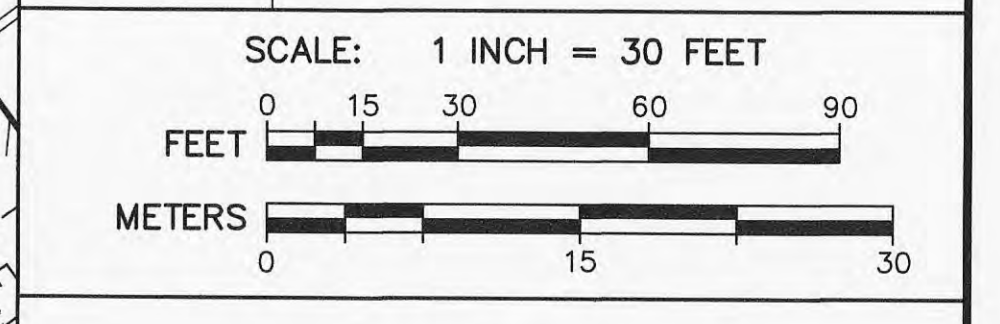


LEGEND

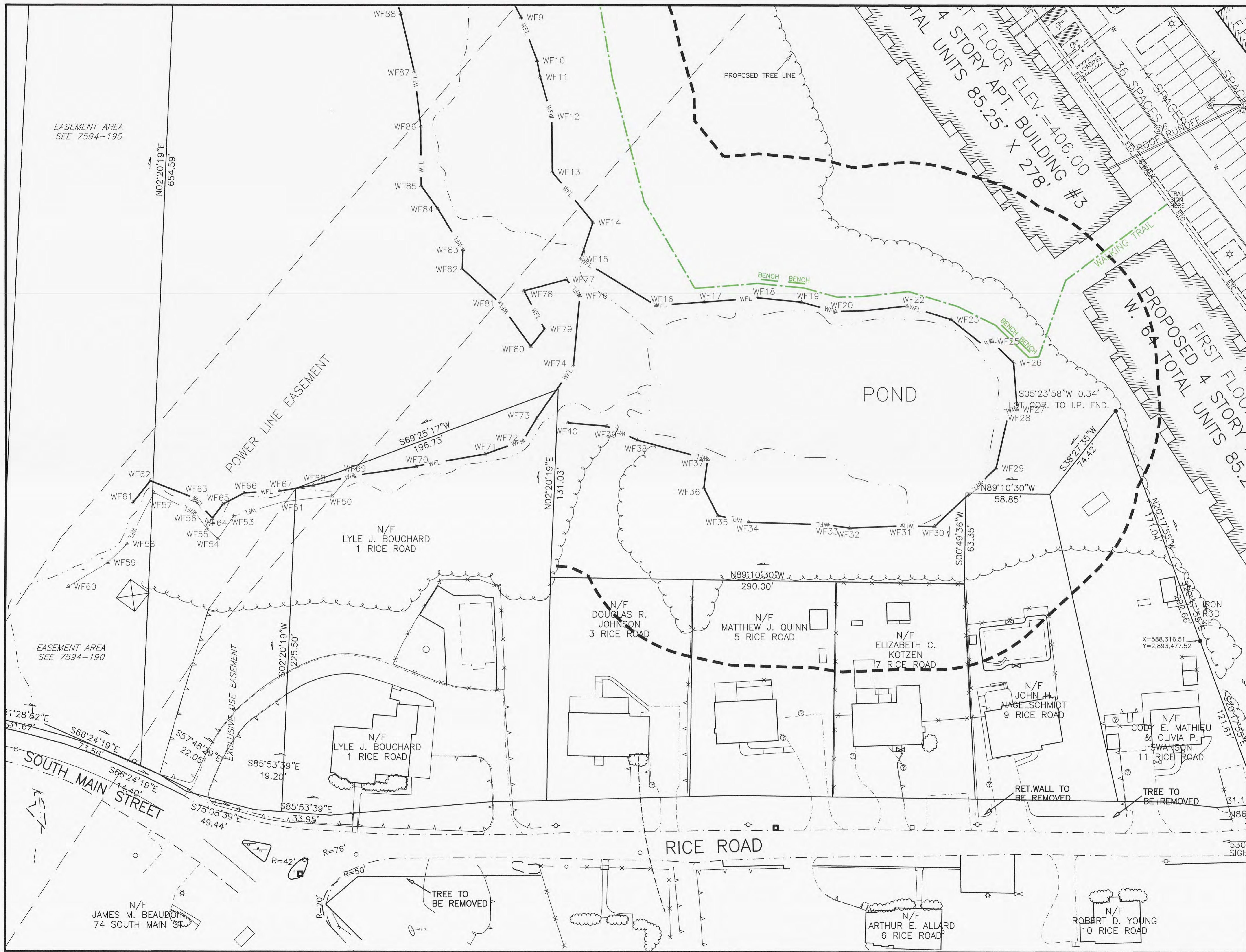
- WFL WETLAND EDGE
- 100' WETLAND BUFFER ZONE LIMIT
- ⊕ PROPOSED DRAIN MANHOLE
- ⊕ PROPOSED CATCHBASIN
- ⊕ OR ⊕ PROPOSED DOUBLE GRATED CATCHBASIN
- ⊕ PROPOSED SEWER MANHOLE
- ⊕ PROPOSED UNDERGROUND DRAIN OR SEWER PIPE
- W PROPOSED WATER LINE
- ⊕ PROPOSED HYDRANT
- EXISTING EDGE OF PAVEMENT
- PROPOSED SLOPED GRANITE CURBING
- #6 ⌀ EXISTING UTILITY POLE
- OHV OVERHEAD WIRES
- STONE WALL
- ☺ TREE
- PROPOSED TREELINE
- ⊕ 23 DEEP OBSERVATION HOLE
- PROPOSED WALKING TRAIL
- ETC PROPOSED ELECTRIC, TELEPHONE, CABLE CONDUIT
- ☼ PROPOSED STREET LIGHT
- INFILTRATION AREA
- ST ○ PROPOSED STOP SIGN
- ♿ PROPOSED HANDICAPPED ACCESSIBLE PARKING SPACE
- PROPOSED TREES
- PROPOSED SHRUBS

AZIMUTH LAND DESIGN, LLC
Professional Engineers & Erosion Control Specialists
118 Turnpike Road, Suite 200, Southborough, MA 01772
Telephone (508)-485-0137 james@azimuthlanddesign.co

CLT. NO.	501	JOB NO.	224-501
DATE:	OCTOBER 24, 2023	DWG. NO.	RICEROADMILLBURYCURRENT
REVISIONS			
DATE:		DESCRIPTION	



RICE POND VILLAGE
SITE PLAN OF LAND
IN
MILLBURY, MASSACHUSETTS
PREPARED FOR
SJV INVESTMENTS, LLC
118 TURNPIKE ROAD, SUITE 200
SOUTHBOROUGH, MA 01772

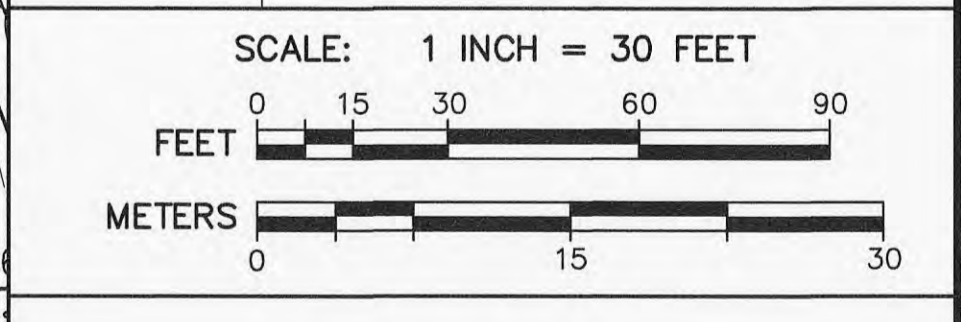


LEGEND

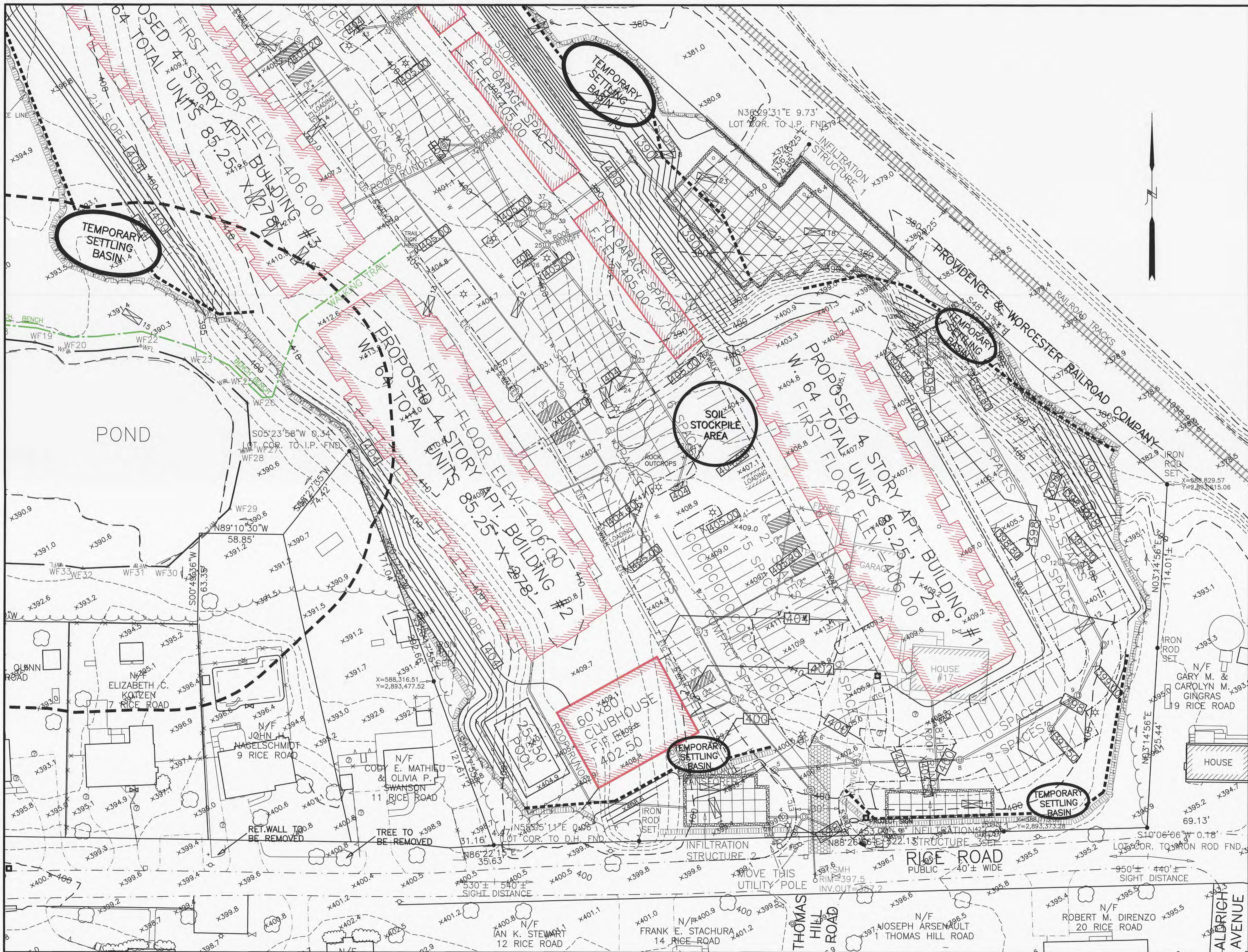
— WFL —	WETLAND EDGE
- - - - -	100' WETLAND BUFFER ZONE LIMIT
⊙	PROPOSED DRAIN MANHOLE
⊕	PROPOSED CATCHBASIN
⊕ OR ⊕	PROPOSED DOUBLE GRATED CATCHBASIN
⊙	PROPOSED SEWER MANHOLE
— W —	PROPOSED UNDERGROUND DRAIN OR SEWER PIPE
— W —	PROPOSED WATER LINE
⊕	PROPOSED HYDRANT
- - - - -	EXISTING EDGE OF PAVEMENT
- - - - -	PROPOSED SLOPED GRANITE CURBING
#6 ⌀	EXISTING UTILITY POLE
— OHW —	OVERHEAD WIRES
—	STONE WALL
⊙	TREE
—	PROPOSED TREELINE
⊕	DEEP OBSERVATION HOLE
—	PROPOSED WALKING TRAIL
— ETC —	PROPOSED ELECTRIC, TELEPHONE, CABLE CONDUIT
⊕	PROPOSED STREET LIGHT
⊕	PROPOSED INFILTRATION STRUCTURE TO RECEIVE CAPTURED RUNOFF
ST ⊕	PROPOSED STOP SIGN
⊕	PROPOSED HANDICAPPED ACCESSIBLE PARKING SPACE
⊕	PROPOSED TREES
⊕	PROPOSED SHRUBS

AZIMUTH LAND DESIGN, LLC
 Professional Engineers & Erosion Control Specialists
 118 Turnpike Road, Suite 200, Southborough, MA 01772
 Telephone (508)-485-0137 james@azimuthlanddesign.co

CLT. NO.	501	JOB NO.	224-501
DATE:	OCTOBER 24, 2023	DWG NO.	RICEROADMILLBURYCURRENT
REVISIONS			
DATE:		DESCRIPTION	



**RICE POND VILLAGE
 SITE PLAN OF LAND**
 IN
MILLBURY, MASSACHUSETTS
 PREPARED FOR
SJV INVESTMENTS, LLC
 118 TURNPIKE ROAD, SUITE 200
 SOUTHBOROUGH, MA 01772

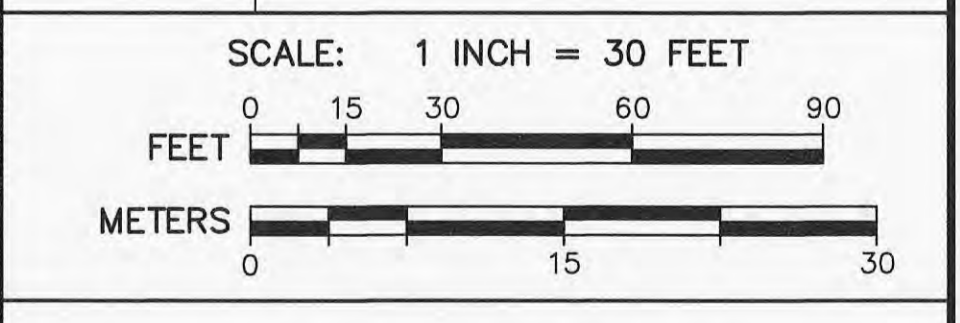


LEGEND

	WETLAND EDGE
	100' WETLAND BUFFER ZONE LIMIT
	2' CONTOUR
	PROPOSED CONTOUR
	EXISTING SPOT GRADE
	PROPOSED SPOT GRADE
	PROPOSED DRAIN MANHOLE
	PROPOSED CATCHBASIN
	PROPOSED DOUBLE GRATED CATCHBASIN
	PROPOSED SEWER MANHOLE
	PROPOSED UNDERGROUND
	PROPOSED DRAIN OR SEWER PIPE
	PROPOSED WATER LINE
	PROPOSED HYDRANT
	EXISTING EDGE OF PAVEMENT
	PROPOSED SLOPED GRANITE CURBING
	EXISTING UTILITY POLE
	OVERHEAD WIRES
	STONE WALL
	TREE
	PROPOSED TREELINE
	DEEP OBSERVATION HOLE
	PROPOSED WALKING TRAIL
	ETC
	PROPOSED ELECTRIC, TELEPHONE, CABLE CONDUIT
	PROPOSED STREET LIGHT
	PROPOSED INFILTRATION STRUCTURE TO RECEIVE CAPTURED RUNOFF
	PROPOSED EROSION CONTROL BARRIER
	PROPOSED STOP SIGN
	PROPOSED DIVERSION SWALE
	PROPOSED HANDICAPPED ACCESSIBLE PARKING SPACE
	PROPOSED TREES
	PROPOSED SHRUBS
	PROPOSED STONE FILLED SITE ENTRANCE MAT

AZIMUTH LAND DESIGN, LLC
Professional Engineers & Erosion Control Specialists
118 Turnpike Road, Suite 200, Southborough, MA 01772
Telephone (508)-485-0137 jamest@azimuthlanddesign.co

CLT. NO.	501	JOB NO.	224-501
DATE:	OCTOBER 24, 2023	DWG. NO.	RICEROADMILLBURYCURRENT
DATE:		REVISIONS DESCRIPTION	



**RICE POND VILLAGE
SITE PLAN OF LAND
IN
MILLBURY, MASSACHUSETTS**

PREPARED FOR
SVJ INVESTMENTS, LLC
118 TURNPIKE ROAD, SUITE 200
SOUTHBOROUGH, MA 01772